

1914

# CATALOGUE AND PRICE LIST

## SECTION S

### MECHANICAL GROUND AND LEADOUT CONNECTIONS

Crank Stands and Compensators

Bridge Couplers and Locks

Turnbuckles, Eye Rods, Jaws

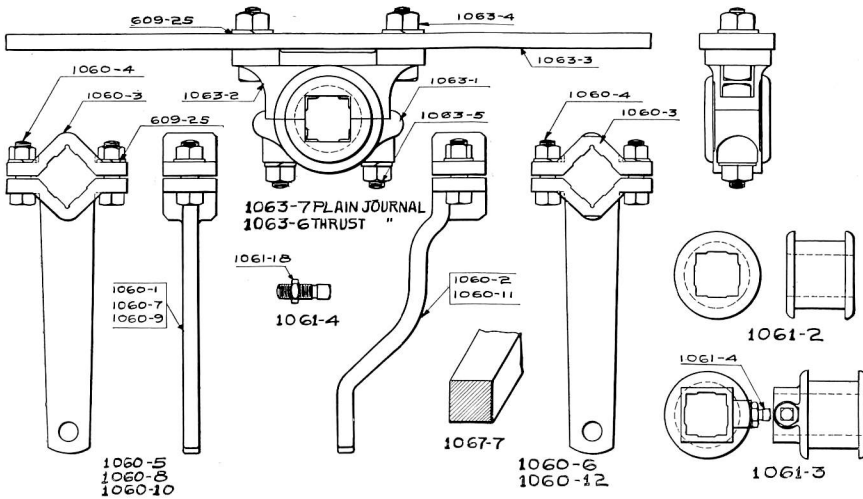
Pipe, Stuffing Boxes

Signal Wire and Pipe

Pipe and Rod Insulations

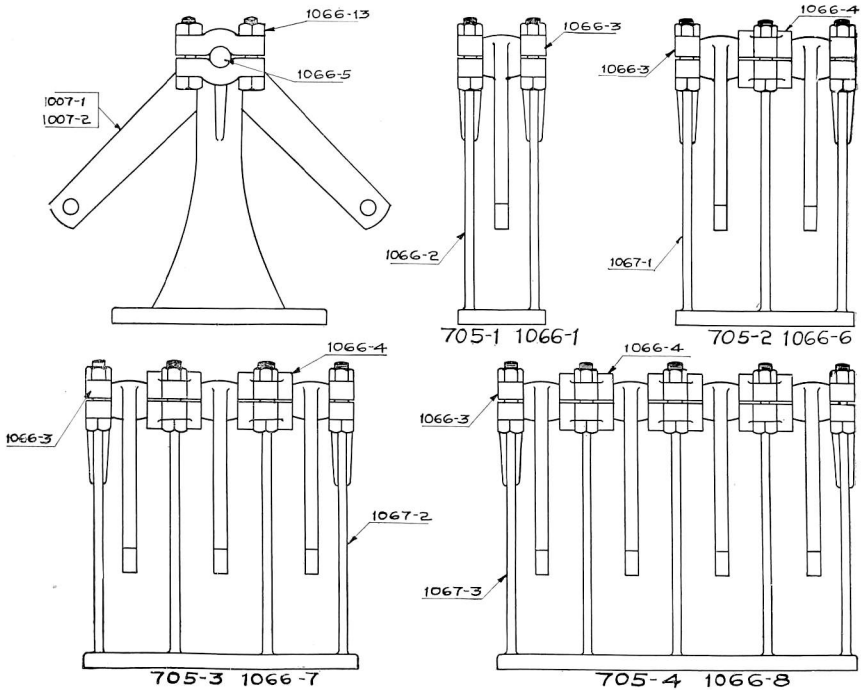


## R. S. A. LOW ROCKER SHAFT BEARINGS



Trade No.	DESCRIPTION	List Price
1063-6	Low Rocker Shaft complete as shown with End Thrust Journal	\$8.10
1063-7	Same as above excepting with Plain Journal	7.65
1060-5	Straight Arm, 11 $\frac{3}{4}$ ", complete as shown	3.51
1060-8	" " 9" " " "	3.33
1060-10	" " 7 $\frac{1}{2}$ " " " "	3.24
1060-6	Offset Arm 11 $\frac{3}{4}$ " " " "	5.31
1060-12	" " 9" " " "	5.13
1063-1	Cap for Low Rocker Shaft Bearing	1.35
1063-2	Low Stand Only	2.16
1063-3	Base Plate	2.25
1063-4	$\frac{3}{4}$ " x 2 $\frac{3}{4}$ " Square Head Machine Bolt and Nut with Lock Washer	.11
1063-5	$\frac{3}{4}$ " x 4" Square Head Machine Bolt and Nut with Lock Washer	.13
1061-2	Plain Journal	1.71
1061-3	Thrust " with Set Screw and Nut	2.16
1061-4	Set Screw with Nut	.11
1061-18	Nut for Set Screw	.05
1061-7	Square Rocker Shaft, 2" x 2" (specify length), per ft.	1.58
1060-1	Straight Arm, 11 $\frac{3}{4}$ " Only	2.25
1060-7	" " 9" " " "	2.07
1060-9	" " 7 $\frac{1}{2}$ " " " "	1.98
1060-2	Offset Arm, 11 $\frac{3}{4}$ " " " "	3.78
1060-11	" " 9" " " "	3.60
1060-3	Cap	1.08
1060-4	$\frac{3}{4}$ " x 2 $\frac{1}{2}$ " Bolt with Standard Hexagon Nut and Lock Washer	.11
609-25	$\frac{3}{4}$ " Lock Washer	.02
950-32	$\frac{3}{4}$ " x 4" Lag Screws, per C.	8.40
1061-19	$\frac{3}{4}$ " x 5" " " " "	10.60
1061-20	$\frac{3}{4}$ " x 6" " " " "	12.80
950-33	Cast Washer for $\frac{3}{4}$ " Bolt	9.50
950-34	Wrought Iron Washer for $\frac{3}{4}$ " Bolt, each	.02
950-35	Bolt and Nut, $\frac{3}{4}$ " x 6", per C.	15.40
950-36	" " " $\frac{3}{4}$ " x 7" " "	15.40
950-37	" " " $\frac{3}{4}$ " x 8" " "	17.60

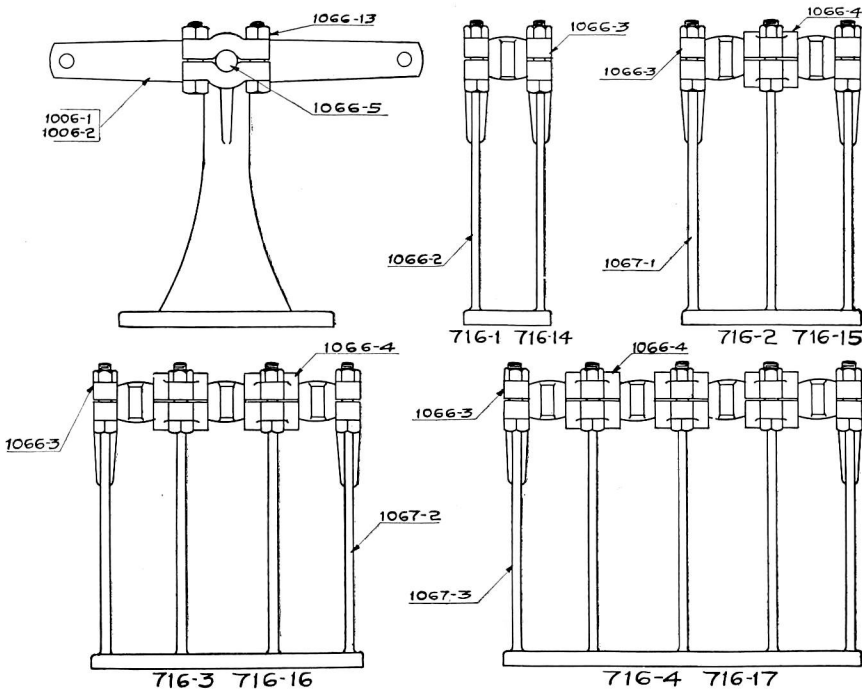
## R. S. A. VERTICAL TYPE CRANK



Trade No.	DESCRIPTION	List Price
705-1	One Way Vertical Crank complete with 9" x 9" Crank.....	\$4.91
705-2	Two " " " " " " 9" x 9" " .....	9.81
705-3	Three " " " " " " 9" x 9" " .....	13.59
705-4	Four " " " " " " 9" x 9" " .....	16.92
1066-1	One " " " " " " 11 3/4" x 11 3/4" Crank .....	5.18
1066-6	Two " " " " " " 11 3/4" x 11 3/4" " .....	10.35
1066-7	Three " " " " " " 11 3/4" x 11 3/4" " .....	14.40
1066-8	Four " " " " " " 11 3/4" x 11 3/4" " .....	18.00
1066-2	One Way Stand Only for above.....	2.70
1067-1	Two " " " " " " .....	5.49
1067-2	Three " " " " " " .....	7.22
1067-3	Four " " " " " " .....	8.46
1066-3	End Cap.....	.14
1066-4	Intermediate Cap.....	.27
1066-5	Pin.....	.27
1007-1	9" x 9" Crank.....	1.53
1007-2	11 3/4" x 11 3/4" Crank.....	1.80
1066-13	5/8" x 3" Square Head Machine Bolt with Hexagon Nut .....	.09
942-16	5/8" Lock Washer, each .....	.02
950-32	Lag Screw, 3/4" x 4", per C.....	8.40
950-33	Cast Washer, 3/4", per C.....	9.50
950-34	Wrought Iron Washer, 3/4", each.....	.02
950-35	Bolt and Nut, 3/4" x 6", per C.....	15.40
950-36	" " " 3/4" x 7", " ".....	15.40
950-37	" " " 3/4" x 8", " ".....	17.60

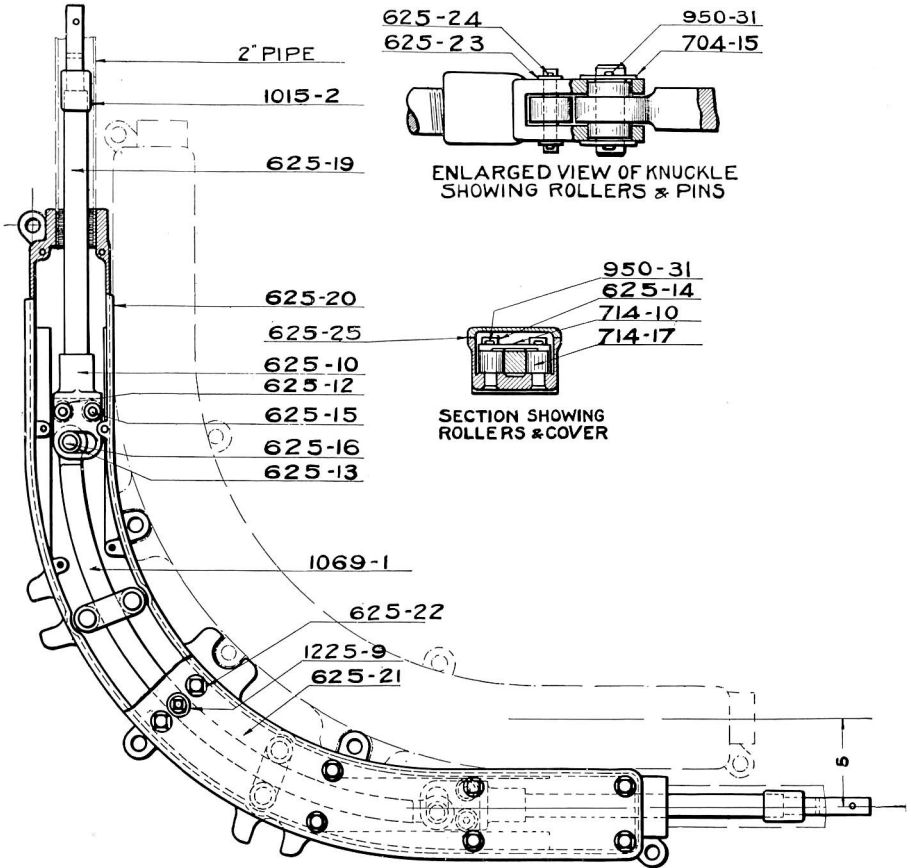


## 180 DEG. VERTICAL TYPE CRANKS



Trade No.	DESCRIPTION	List Price
716-1	One Way Vertical Crank complete with 9" x 9" Crank.....	\$4.91
716-2	Two " " " " " 9" x 9" " .....	9.81
716-3	Three " " " " " 9" x 9" " .....	13.59
716-4	Four " " " " " 9" x 9" " .....	16.92
716-14	One " " " " " 11 3/4" x 11 3/4" Crank .....	5.18
716-15	Two " " " " " 11 3/4" x 11 3/4" " .....	10.35
716-16	Three " " " " " 11 3/4" x 11 3/4" " .....	14.40
716-17	Four " " " " " 11 3/4" x 11 3/4" " .....	18.00
1066-2	R. S. A. One Way Stand Only for above .....	2.70
1067-1	" " " Two " " " " " .....	5.49
1067-2	" " " Three " " " " " .....	7.22
1067-3	" " " Four " " " " " .....	8.46
1066-3	" " End Cap .....	.14
1066-4	" " Intermediate Cap .....	.27
1066-5	" " Pin .....	.27
1066-1	" " 9" x 9" Crank .....	1.53
1066-2	" " 11 3/4" x 11 3/4" Crank .....	1.80
1066-13	5/8" x 3" Square Head Machine Bolt and Hexagon Nut.....	.09
942-16	3/8" Lock Washer, each.....	.02
950-32	Lag Screw, 3/4" x 4", per C.....	8.40
950-33	Cast Washer, 3/4", per C.....	9.50
950-34	Wrought Iron Washer, 3/4", each.....	.02
950-35	Bolt and Nut, 3/4" x 6", per C.....	15.40
950-36	" " " 3/4" x 7", " " .....	15.40
950-37	" " " 3/4" x 8", " " .....	17.60

## HORIZONTAL AND VERTICAL DEFLECTING STANDS—WATERPROOF TYPE



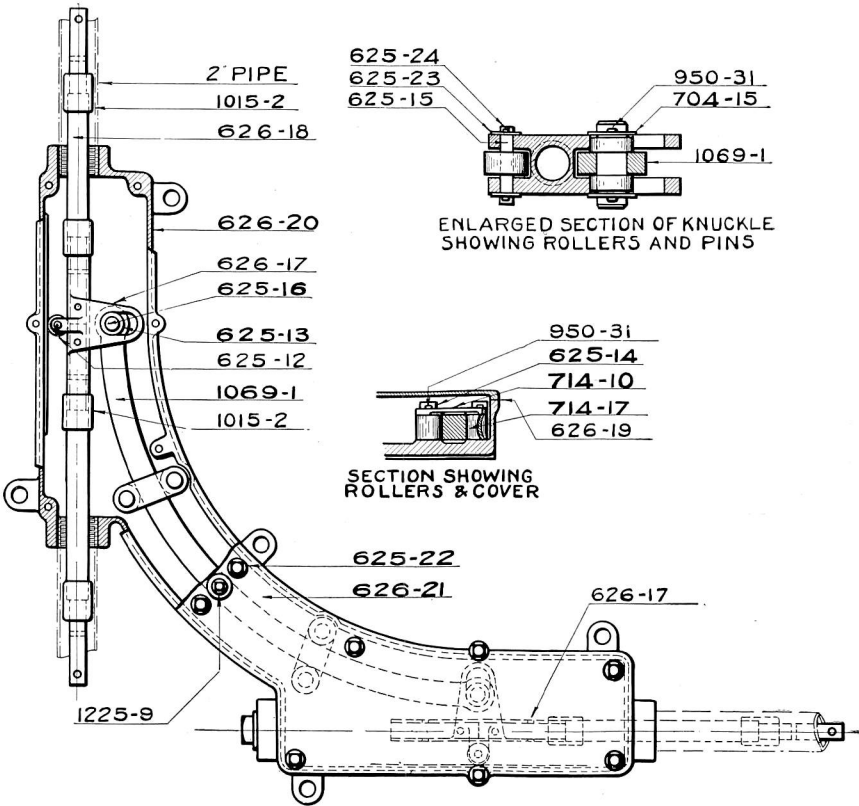
**No. 625 Horizontal Waterproof 90 deg. Deflecting Stand**

The Stands illustrated above and on the following pages, are absolutely waterproof and are so constructed that all moving parts are held in line by Rollers, guided on finished surfaces, thus preventing cramping or binding.

R. S. A. 90 deg. Deflecting Bars and Rollers are used for the moving members, and R. S. A. 1" Signal Pipe Fittings for leading to and from the Stands. All Outlets are threaded with 2" Pipe Thread, so that either 2" Pipe or R. S. A. Stuffing Boxes (without coupling) can be used. A  $\frac{3}{4}$ " Pipe Plug is provided for filling the Boxes with Oil, the maximum stroke is 12" and Boxes can be mounted for 5" centers (except for No. 626 Stand).

It will be seen from the illustration that these Stands may be used to advantage in connection with Leadouts, Crossing Gates or for running pipe lines under Tracks, Streets, Platforms, etc., or when waterproof connections are desired.

## HORIZONTAL AND VERTICAL DEFLECTING STANDS—WATERPROOF TYPE

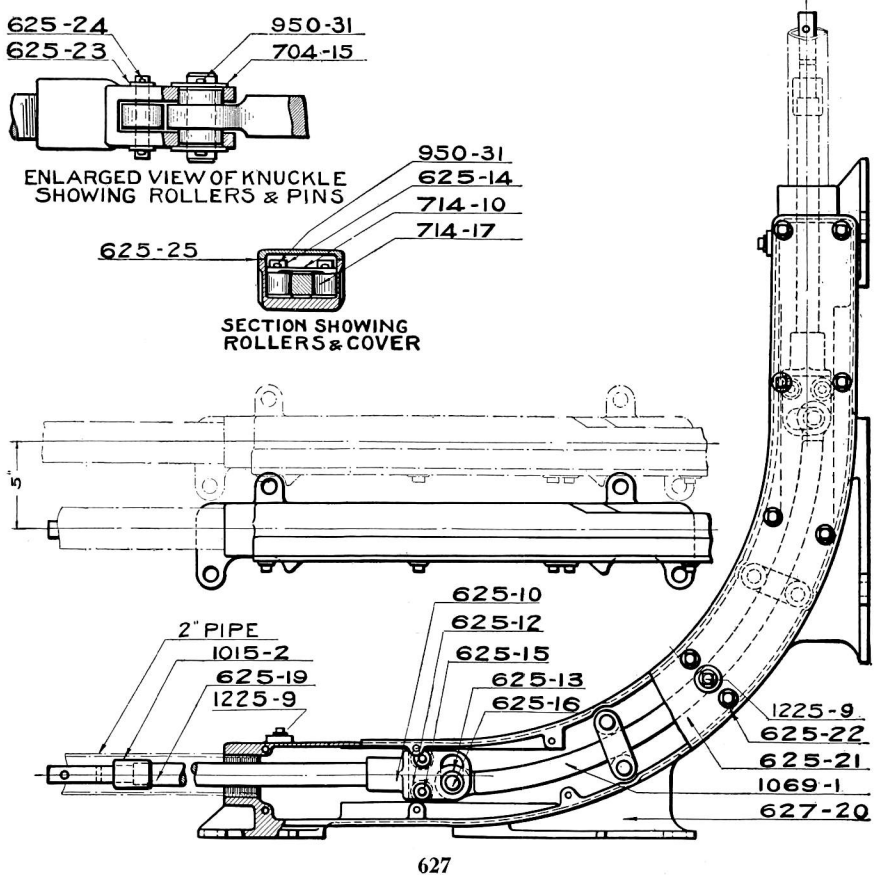


**No. 626 Horizontal Waterproof 90 deg. Deflecting Stand, Four Outlets**

The Stand illustrated above is used at all places when T Cranks are used, but when connections are desired to be waterproof. Connections may be attached to any outlet.

Trade No.	DESCRIPTION	List Price
625	Horizontal Deflecting Stand with Two Outlets, complete as shown.....	.....
626	Horizontal Deflecting Stand with Four Outlets, complete as shown.....	.....
627	Vertical Deflecting Stand with Two Outlets, complete as shown.....	.....
628	Vertical Deflecting Stand with Four Outlets, complete as shown.....	.....
	For each Packing Box required for above Stands, add.....	\$4.75
	For Parts of Stand, see next page.	

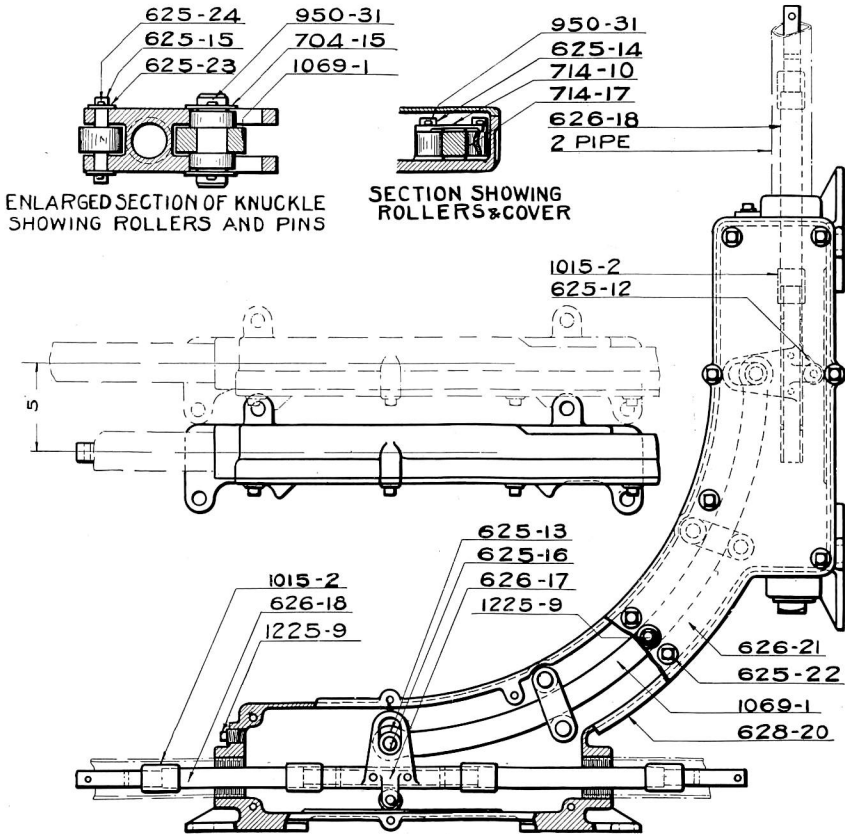
## HORIZONTAL AND VERTICAL DEFLECTING STANDS—WATERPROOF TYPE



No. 627 Vertical Waterproof 90 deg. Deflecting Stand

Trade No.	DESCRIPTION	List Price
625-20	Horizontal Deflecting Box Only with Two Outlets .....	.....
626-20	“ “ “ “ Four “ .....	.....
627-20	Vertical “ “ “ “ Two “ .....	.....
628-20	“ “ “ “ Four “ .....	.....
625-21	Cover for No. 625-20 and 627-20 Deflecting Box .....	.....
626-21	“ “ 626-20 and 628-20 “ .....	.....
1069-1	R. S. A. Deflecting Bar .....	\$3.60
714-10	Cap for Deflecting Bar Guide Roller .....	.27
714-17	Deflecting Bar Guide Roller .....	.18
625-14	“ “ “ “ Pin with Cotter .....	.18
625-13	“ “ Roller .....	.18
625-16	“ “ “ “ Pin with Cotters .....	.24

## HORIZONTAL AND VERTICAL DEFLECTING STANDS—WATERPROOF TYPE

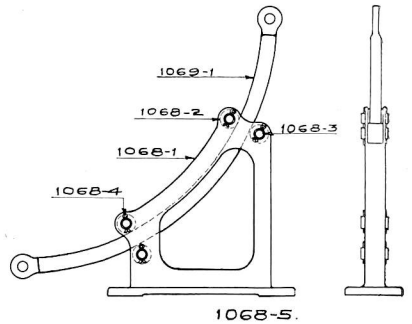
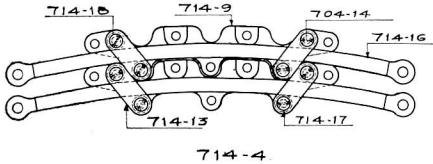
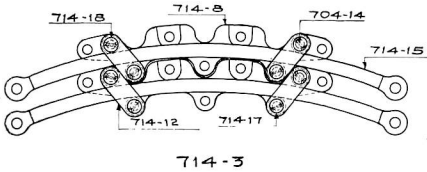
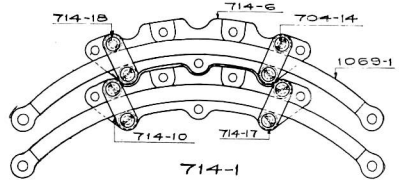
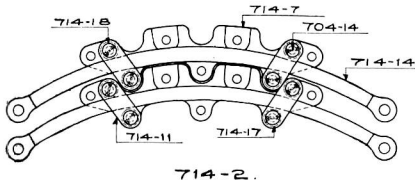


**No. 628 Vertical Waterproof 90 deg. Deflecting Stand with Four Outlets**

Used in place of Vertical T Cranks where watertight connections are desired  
Connections may be attached to any of the Four Outlets.

Trade No.	DESCRIPTION	List Price
625-12	Knuckle Jaw Roller.....	\$0.18
625-15	“ “ “ Pin with Cotters.....	.09
625-10	“ “ “ for Double Roller.....	.....
626-17	“ “ “ Single “.....	.....
625-19	Operating Rod with Coupling and Threaded End.....	1.90
626-18	“ “ “ Two Tang Ends.....	2.05
1015-2	1" x 2 1/4" Coupling.....	.27
1015-5	1/4" x 1 1/8" Rivets, per C.....	.54
625-22	3/8" x 7/8" Hexagon Head Cap Screws for fastening Cover to Box	.04
1225-9	3/4" Galvanized Pipe Plug.....	.07
704-15	7/8" Iron Washer for Deflecting Bar Roller Pin.....	.02
625-23	3/8" “ “ “ Knuckle Jaw.....	.01
950-31	1/8" x 1 1/4" Cotter Pin for Guide Roller, per C.....	.96
625-24	3/8" x 3/4" “ “ “ Knuckle Roller Pin, Per C.....	.90

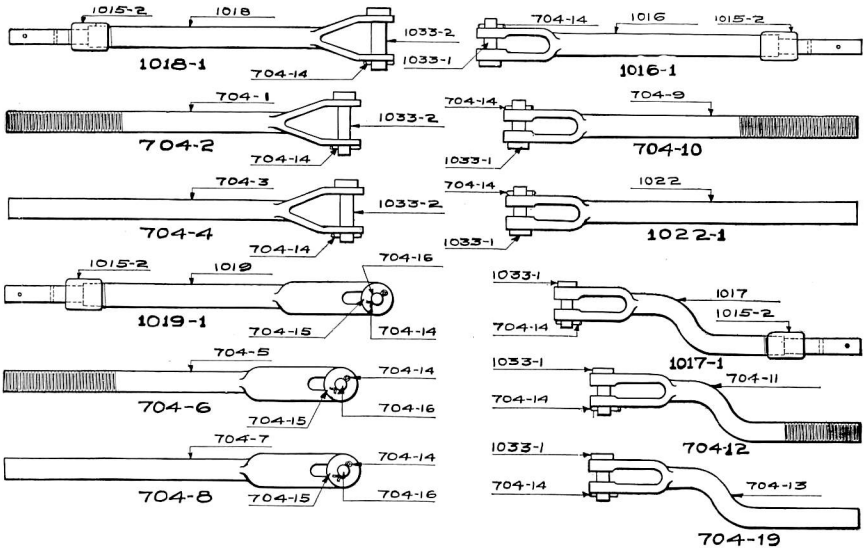
## DEFLECTING BARS



Trade No.	DESCRIPTION	List Price
1068-5	Vertical Deflecting Bar, complete as shown.....	\$10. 80
714-1	Horizontal 90 deg. Deflecting Bar, complete as shown.....	10. 80
714-2	“ 67 1/2 “ “ “ “ “ “ “ .....	10. 80
714-3	“ 45 “ “ “ “ “ “ “ .....	10. 80
714-4	“ 22 1/2 “ “ “ “ “ “ “ .....	10. 80
1068-1	Vertical Stand Only.....	4. 50
714-6	90 deg. Horizontal Stand Only.....	4. 50
714-7	67 1/2 “ “ “ “ “ “ “ “ .....	4. 50
714-8	45 “ “ “ “ “ “ “ “ .....	4. 50
714-9	22 1/2 “ “ “ “ “ “ “ “ .....	4. 50
714-10	90 deg. Horizontal Cap Only.....	. 27
714-11	67 1/2 “ “ “ “ “ “ “ “ .....	. 27
714-12	45 “ “ “ “ “ “ “ “ .....	. 27
714-13	22 1/2 “ “ “ “ “ “ “ “ .....	. 27
1069-1	90 deg. Deflecting Bar.....	3. 60
714-14	67 1/2 “ “ “ “ “ “ “ “ .....	3. 60
714-15	45 “ “ “ “ “ “ “ “ .....	3. 60
714-16	22 1/2 “ “ “ “ “ “ “ “ .....	3. 60
714-17	Roller for Horizontal Deflecting Bars.....	. 18
714-18	Pin “ “ “ “ “ “ “ “ with Two 1 1/4 “ x 1 1/2 “	
	Cotters.....	. 18
704-14	3/8 “ x 1 1/2 “ Cotter Pin, per C.....	. 90
1068-2	Roller for Vertical Deflecting Bars.....	. 18
1068-3	Pin “ “ “ “ “ “ “ “ .....	. 18
1068-4	1/4 “ x 1 1/2 “ Cotter Pin, per C.....	. 96
950-32	Lag Screw, 3/4 “ x 4 “, per C.....	8. 40
950-33	Cast Washer for 3/4 “ Bolts, per C.....	9. 50
950-34	Wrought Iron Washer for 3/4 “ Bolts.....	. 02
950-35	Bolt and Nut, 3/4 “ x 6 “, per C.....	15. 40
950-36	“ “ “ 3/4 “ x 7 “, “ “ .....	15. 40
950-37	“ “ “ 3/4 “ x 8 “ “ “ .....	17. 60



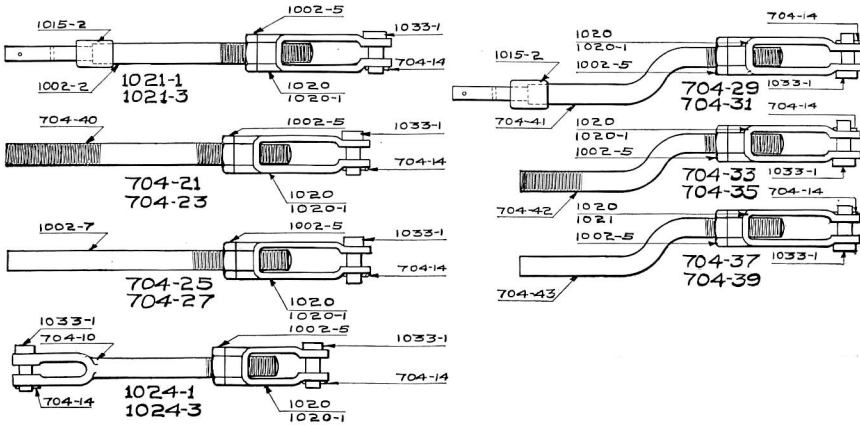
## SOLID JAWS



Trade No.	DESCRIPTION	List Price
1018	R. S. A. Straight Solid Wide Jaw, Tang End.....	\$2.05
1018-1	Same as above with Pin and Cotter.....	2.16
704-1	Straight Solid Wide Jaw, Threaded End.....	1.83
704-2	Same as above with Pin and Cotter.....	1.94
704-3	Straight Solid Wide Jaw, Butt End.....	1.60
704-4	Same as above with Pin and Cotter.....	1.71
1019	R. S. A. Straight Slotted Jaw, Tang End.....	4.37
1019-1	Same as above with Pin, Cotter and Washer.....	4.50
704-5	Straight Slotted Jaw, Threaded End.....	4.15
704-6	Same as above with Pin, Cotter and Washer.....	4.28
704-7	Straight Slotted Jaw, Butt End.....	3.92
704-8	Same as above with Pin, Cotter and Washer.....	4.05
1016	R. S. A. Straight Solid Jaw, Tang End.....	1.33
1016-1	Same as above with Pin and Cotter.....	1.44
704-9	Straight Solid Jaw, Threaded End.....	1.11
704-10	Same as above with Pin and Cotter.....	1.22
1022	R. S. A. Straight Solid Jaw, Butt End.....	.88
1022-1	Same as above with Pin and Cotter.....	.99
1017	R. S. A. Offset Solid Jaw, Tang End.....	2.14
1017-1	Same as above with Pin and Cotter.....	2.25
704-11	Offset Solid Jaw, Threaded End.....	1.92
704-12	Same as above with Pin and Cotter.....	2.03
704-13	Offset Solid Jaw, Butt End.....	1.69
704-19	Same as above with Pin and Cotter.....	1.80
1033-1	R. S. A. Jaw Pin, $\frac{7}{8}$ " x $2\frac{1}{4}$ ", with Cotter.....	.11
1033-2	" " " " $\frac{7}{8}$ " x $3\frac{1}{4}$ " " ".....	.18
704-14	$\frac{3}{8}$ " x $1\frac{1}{2}$ " Cotter Pin, per C.....	.90
704-15	$\frac{7}{8}$ " Washer for Slotted Jaws.....	.02
1015-2	1" x $2\frac{1}{4}$ " Coupling, Black.....	.27
1015-3	1" x $2\frac{1}{4}$ " " Galvanized.....	.32
1015-4	$\frac{1}{4}$ " x $1\frac{1}{8}$ " Rivets, Galvanized, per C.....	1.13
1015-5	$\frac{1}{4}$ " x $1\frac{1}{8}$ " " Black, per C.....	.54

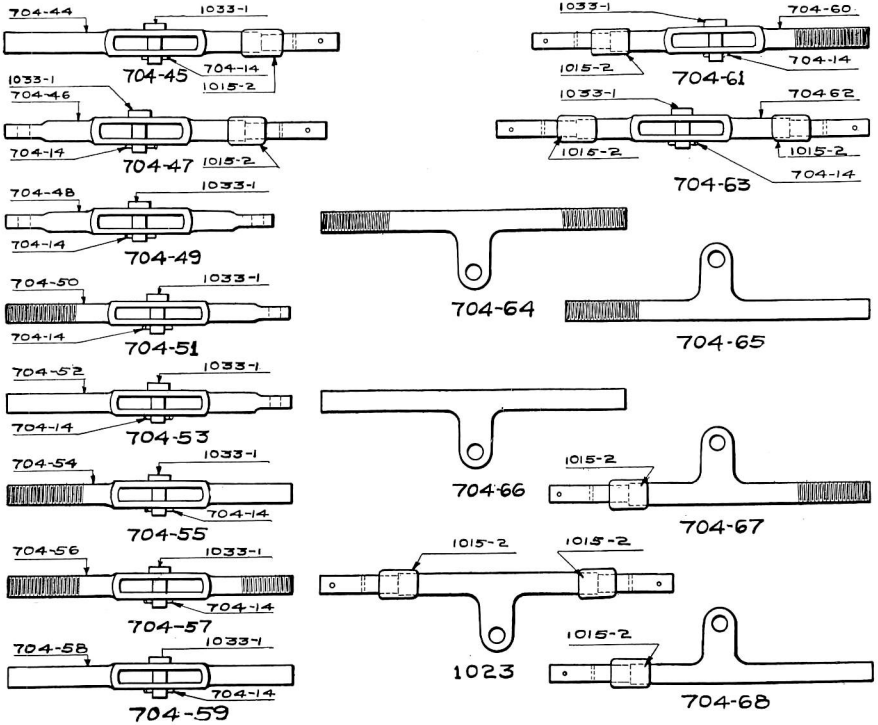


## SCREW JAWS



Trade No.	DESCRIPTION	List Price
1021	R. S. A. Screw Jaw, Tang End with Nut and Forged Jaw .....	\$2.10
1021-1	Same as above with Pin and Cotter .....	2.21
1021-2	Screw Jaw, Tang End with Nut and Malleable Jaw .....	1.78
1021-3	Same as above with Pin and Cotter .....	1.89
704-20	Screw Jaw, Threaded End with Nut and Forged Jaw .....	1.88
704-21	Same as above with Pin and Cotter .....	1.99
704-22	Screw Jaw, Threaded End with Nut and Malleable Jaw .....	1.56
704-23	Same as above with Pin and Cotter .....	1.67
704-24	Screw Jaw, Butt End with Nut and Forged Jaw .....	1.65
704-25	Same as above with Pin and Cotter .....	1.76
704-26	Screw Jaw, Butt End with Nut and Malleable Jaw .....	1.33
704-27	Same as above with Pin and Cotter .....	1.33
1024	R. S. A. Screw Jaw, Solid Jaw End with Nut and Forged Jaw .....	2.91
1024-1	Same as above with Pin and Cotter .....	3.02
1024-2	Screw Jaw, Solid Jaw End with Nut and Malleable Jaw .....	2.59
1024-3	Same as above with Pin and Cotter .....	2.70
704-28	Offset Screw Jaw, Tang End with Nut and Forged Jaw .....	2.91
704-29	Same as above with Pin and Cotter .....	3.02
704-30	Offset Screw Jaw, Tang End with Nut and Malleable Jaw .....	2.59
704-31	Same as above with Pin and Cotter .....	2.70
704-32	Offset Screw Jaw, Threaded End with Nut and Forged Jaw .....	2.69
704-33	Same as above with Pin and Cotter .....	2.80
704-34	Offset Screw Jaw, Threaded End with Nut and Malleable Jaw .....	2.37
704-35	Same as above with Pin and Cotter .....	2.48
704-36	Offset Screw Jaw, Butt End with Nut and Forged Jaw .....	2.46
704-37	Same as above with Pin and Cotter .....	2.57
704-38	Offset Screw Jaw, Butt End with Nut and Malleable Jaw .....	2.14
704-39	Same as above with Pin and Cotter .....	2.25
1002-2	Threaded Rod, Tang End with Nut .....	1.26
704-40	" " Threaded End with Nut .....	1.04
1002-7	" " Butt End with Nut .....	.81
704-10	Solid Jaw with Nut .....	1.22
704-41	Threaded Offset Rod, Tang End with Nut .....	2.07
704-42	" " " Threaded End with Nut .....	1.85
704-43	" " " Butt End with Nut .....	1.62
1020	Screw Jaw, Forging .....	.86
1020-1	" " Malleable Iron .....	.54
1033-1	R. S. A. Jaw Pin, $\frac{7}{8}$ " x $2\frac{1}{2}$ ", with Cotter .....	.11
704-14	$\frac{3}{4}$ " x $1\frac{1}{2}$ " Cotter Pin, per C. ....	.90
1002-5	Standard $1\frac{1}{4}$ " Hexagon Nut, $\frac{3}{4}$ " thick .....	.18
1015-2	1" x $2\frac{1}{4}$ " Coupling, Black .....	.27
1015-3	1" x $2\frac{1}{4}$ " " Galvanized .....	.32
1015-4	$\frac{1}{2}$ " x $1\frac{1}{8}$ " Rivets, Galvanized, per C. ....	1.13
1015-5	$\frac{1}{4}$ " x $1\frac{1}{8}$ " " Black, per C. ....	.54

## DOUBLE JAWS AND LUGS

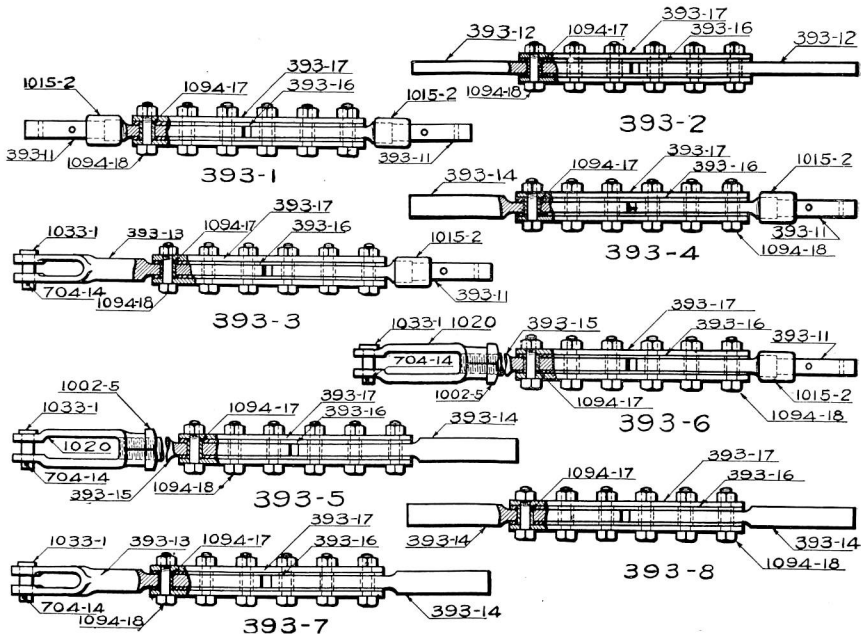


Trade No.	DESCRIPTION	List Price
704-44	Double Jaw, Butt and Tang End . . . . .	\$4.84
704-45	Same as above with Pin and Cotter . . . . .	4.95
704-46	Double Jaw, Eye and Tang End . . . . .	5.29
704-47	Same as above with Pin and Cotter . . . . .	5.40
704-48	Double Jaw, Two Eye Ends . . . . .	5.29
704-49	Same as above with Pin and Cotter . . . . .	5.40
704-50	Double Jaw, Eye End and Threaded End . . . . .	5.06
704-51	Same as above with Pin and Cotter . . . . .	5.17
704-52	Double Jaw, Eye End and Butt End . . . . .	4.84
704-53	Same as above with Pin and Cotter . . . . .	4.95
704-54	Double Jaw, Threaded End and Butt End . . . . .	4.61
704-55	Same as above with Pin and Cotter . . . . .	4.72
704-56	Double Jaw, Two Threaded Ends . . . . .	4.84
704-57	Same as above with Pin and Cotter . . . . .	4.95
704-58	Double Jaw, Two Butt Ends . . . . .	4.39
704-59	Same as above with Pin and Cotter . . . . .	4.50
704-60	Double Jaw, Tang and Threaded End . . . . .	5.06
704-61	Same as above with Pin and Cotter . . . . .	5.17
704-62	Double Jaw, Two Tang Ends . . . . .	5.29
704-63	Same as above with Pin and Cotter . . . . .	5.40
704-64	Lug, Two Ends Threaded . . . . .	1.80
704-65	One Threaded and One Butt End . . . . .	1.57
704-66	Two Butt Ends . . . . .	1.35
704-67	One Threaded and One Tang End . . . . .	2.02
704-68	Butt End . . . . .	1.80
1023	R. S. A. Lug, Two Tang Ends . . . . .	2.25
1015-2	1" x 2 1/4" Sleeve, Black . . . . .	.27
1015-3	1" x 2 1/4" " Galvanized . . . . .	.32
1015-4	1/4" x 1 1/8" Rivets . . . . .	1.13
1015-5	1/4" x 1 1/8" " Black . . . . .	.54
1033-1	R. S. A. Jaw Pin, 7/8" x 2 1/2" with Cotter . . . . .	.11
704-14	3/8" x 1 1/2" Cotter Pin, per C. . . . .	.90



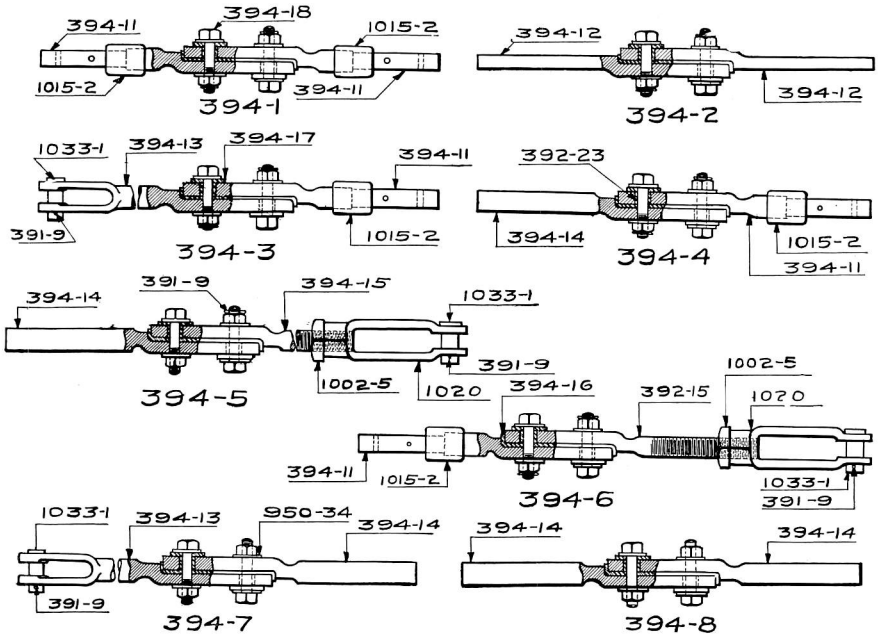


## SIX BOLT PIPE OR ROD INSULATIONS



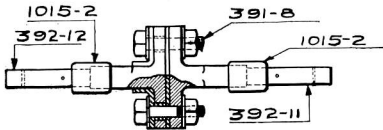
Trade No.	DESCRIPTION	List Price
393-1	Six Bolt Insulation with Tang Ends and Sleeves, each.....	\$4.65
393-2	“ “ “ “ Flat Stub Ends.....	2.75
393-3	“ “ “ “ Tang End and Sleeves and Solid Jaw, each.....	6.11
393-4	Six Bolt Insulation with One Tang End and Sleeve and One Round Butt End, each.....	4.20
393-5	Six Bolt Insulation with One Round Butt End and R. S. A. Forged Screw Jaw, each.....	5.12
393-55	Same as above but with Malleable Screw Jaw, each.....	4.80
393-6	Six Bolt Insulation with One Tang End and Sleeve and R.S.A. Forged Screw Jaw, each.....	5.57
393-66	Same as above but with Malleable Screw Jaw, each.....	5.25
393-7	Six Bolt Insulation with One Round Butt End and Solid Jaw, each.....	5.66
393-8	Six Bolt Insulation with Two Round Butt Ends.....	3.75
393-11	Half Rod with Tang End and Sleeve, each.....	1.45
393-12	“ “ “ Flat Stub End, each.....	.50
393-13	“ “ “ Standard Solid Jaw, each.....	2.80
393-14	“ “ “ Round Butt End, each.....	1.00
393-15	“ “ “ Threaded for R. S. A. Screw Jaw, each.....	1.22
393-16	Fibre Plate, each.....	.24
393-17	Splice “ “.....	.48
1002-5	$\frac{3}{4}$ " x $1\frac{1}{4}$ " Hexagon Nut, each.....	.18
1020	Standard $1\frac{1}{4}$ " R. S. A. Forged Screw Jaw, each.....	.86
1020-1	“ “ $1\frac{1}{4}$ " Malleable Screw Jaw, each.....	.54
1094-17	Fibre Bushing Only, per C.....	5.40
1094-18	$\frac{5}{8}$ " Nut and Bolt Only, each.....	.11
1033-1	$\frac{7}{8}$ " x $2\frac{1}{4}$ " Jaw Pin with Cotter.....	.11
704-14	$\frac{3}{16}$ " x $1\frac{1}{2}$ " Cotter Pins for above, per C.....	.96

## TWO BOLT PIPE AND ROD INSULATIONS

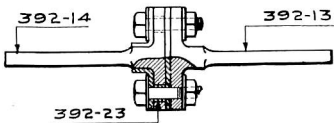


Trade No.	DESCRIPTION	List Price
394-1	Two Bolt Insulation with Tang Ends and Sleeves, each . . . . .	\$3.90
394-2	“ “ “ “ Flat Stub Ends, each . . . . .	3.00
394-3	“ “ “ “ Tang End and Sleeve and Solid Jaw, each . . . . .	5.36
394-4	Two Bolt Insulation with One Tang End and Sleeve and One Round Butt End, each . . . . .	3.45
394-5	Two Bolt Insulation with One Round Butt End and R. S. A. Forged Screw Jaw, each . . . . .	4.37
394-55	Same as above but with Malleable Screw Jaw, each . . . . .	4.05
394-6	Two Bolt Insulation with One Tang End and Sleeve and R. S. A. Forged Screw Jaw, each . . . . .	4.82
394-66	Same as above but with Malleable Screw Jaw, each . . . . .	4.50
394-7	Two Bolt Insulation with One Round Butt End and Solid Jaw . . . . .	4.91
394-8	Two Bolt Insulation with Two Round Butt Ends, each . . . . .	3.00
394-11	Half Rod with Tang End and Sleeve, each . . . . .	1.70
394-12	“ “ “ Flat Stub End, each . . . . .	1.25
394-13	“ “ “ Solid Jaw, each . . . . .	3.05
394-14	“ “ “ Round Butt End, each . . . . .	1.25
394-15	“ “ “ Threaded End for Screw Jaw, each . . . . .	1.47
394-16	Bent Fibre Insulating Plate Only, each . . . . .	.24
394-17	Fibre Washer Only for Bolt Head, each . . . . .	.04
394-18	3/4" Nut and Bolt for above, each . . . . .	.13
950-34	3/4" Standard Washer for above, each . . . . .	.02
392-23	Fibre Bolt Bushing Only for 394-18, per C. . . . .	5.40
1002-5	1 1/4" Hexagon Nut, 3/4" thick . . . . .	.18
1020	Standard 1 1/4" R. S. A. Forged Screw Jaw, each . . . . .	.86
1020-1	“ 1 1/4" Malleable Screw Jaw, each . . . . .	.54
1033-1	Jaw Pin and Cotter for above, each . . . . .	.11

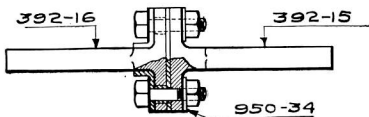
## “T” PIPE AND ROD INSULATIONS



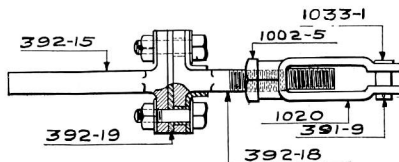
**392-1**



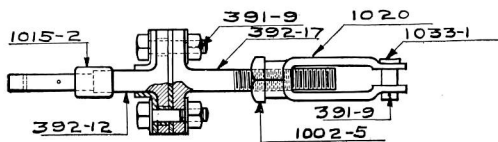
**392-2**



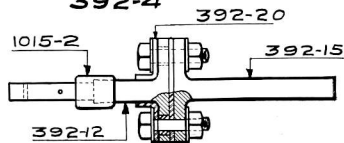
**392-3**



**392-4**



**392-5**



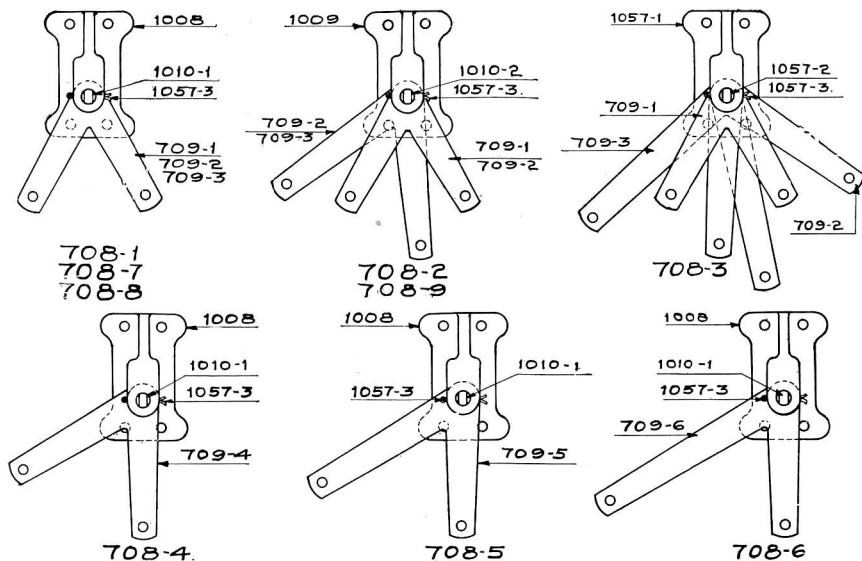
**392-6**

Trade No.	DESCRIPTION	List Price
392-1	“T” Insulation with Tang Ends and Sleeve . . . . .	\$3.55
392-2	“ “ “ Flat Stub Ends, each . . . . .	2.65
392-3	“ “ “ Round Butt Ends, each . . . . .	2.65
392-4	“ “ “ One Round Butt End and One R. S. A. Forged Screw Jaw, each . . . . .	4.02
392-44	Same as above but with Malleable Screw Jaw, each . . . . .	3.70
392-5	“T” Insulation with One Tang End and Sleeve and One R. S. A. Forged Screw Jaw, each . . . . .	4.47
392-55	Same as above but with Malleable Screw Jaw, each . . . . .	4.15
392-6	“T” Insulation with One Tang End and Sleeve and One Round Butt End, each . . . . .	3.10
392-11	Half Rod with Tang End and Sleeve for Bolt Side, each . . . . .	1.35
392-12	“ “ “ “ “ Fibre “ “ . . . . .	1.35
392-13	“ “ “ Square Stub Ends for Bolt Side, each . . . . .	.90
392-14	“ “ “ “ “ Fibre “ “ . . . . .	.90
392-15	“ “ “ Round “ “ “ Bolt “ “ . . . . .	.90
392-16	“ “ “ “ “ “ Fibre “ “ . . . . .	.90
392-17	“ “ Threaded for Screw Jaw for Bolt Side, each . . . . .	1.12
392-18	“ “ “ “ “ Fibre “ “ . . . . .	1.12
392-19	Fibre Center Plate Only, each . . . . .	.12
392-20	Bent Fibre Plate for Bolt, each . . . . .	.15
950-34	Washer for $\frac{3}{4}$ " Bolt, each . . . . .	.02
1002-5	$\frac{3}{4}$ " x $1\frac{1}{4}$ " Hexagon Nut, each . . . . .	.18
392-23	Fibre Bolt Bushing, per C. . . . .	5.40
391-8	$\frac{3}{4}$ " Bolt and Nut drilled for Cotter Pin, each . . . . .	.13
391-9	$\frac{3}{8}$ " Cotter Pin for above, each . . . . .	.01
1020	Forged R. S. A. Screw Jaw, each . . . . .	.86
1020-1	Malleable Screw Jaw, each . . . . .	.54
1033-1	$\frac{7}{8}$ " x $2\frac{1}{4}$ " Jaw Pin with Cotter . . . . .	.11





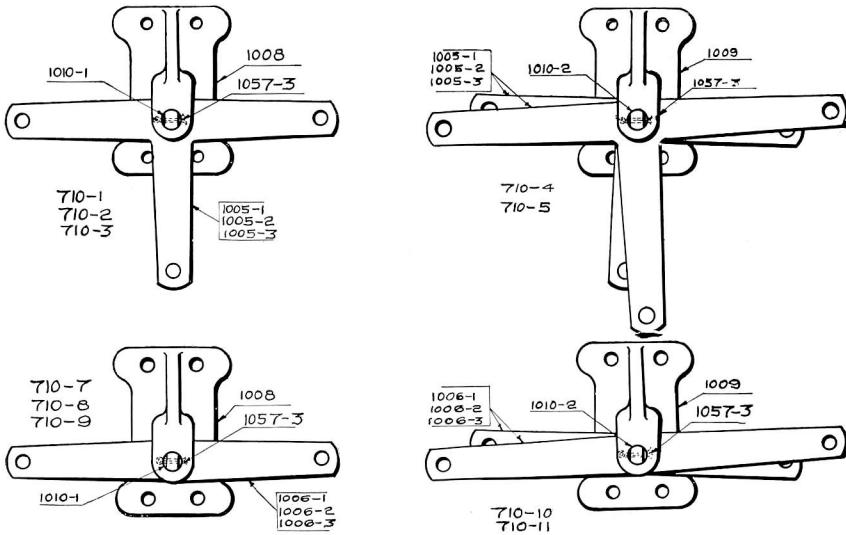
## ACUTE HORIZONTAL CRANKS



Trade No.	DESCRIPTION	List Price
708-1	One Way Acute Horizontal Crank, 9" x 9", complete as shown	\$3.60
708-2	Two " " " " 9" x 9", 11 3/4" x 11 3/4", complete as shown	5.67
708-3	Three Way Acute Horizontal Crank, 9" x 9", 11 3/4" x 11 3/4", 14 1/2" x 14 1/2", complete as shown	8.10
708-4	One Way Acute Horizontal Crank, 10" x 11", complete as shown	3.87
708-5	" " " " 10" x 13" " " "	4.05
708-6	" " " " 10" x 16" " " "	4.23
708-7	One Way Acute Horizontal Crank, 11 3/4" x 11 3/4", complete as shown	3.87
708-8	One Way Acute Horizontal Crank, 14 1/2" x 14 1/2", complete as shown	4.14
708-9	Two Way Acute Horizontal Crank, 11 3/4" x 11 3/4", 14 1/2" x 14 1/2", complete as shown	6.21
1008	R. S. A. One Way Stand Only	1.89
1009	" " " Two " " "	2.16
1057-1	" " " Three " " "	2.43
1010-1	" " " One Way Pin with Cotter	.32
1010-2	" " " Two " " "	.40
1057-2	" " " Three " " "	.50
709-1	9" x 9" Acute Crank	1.53
709-2	11 3/4" x 11 3/4" Acute Crank	1.80
709-3	14 1/2" x 14 1/2" " "	2.61
709-4	10" x 11" " "	1.80
709-5	10" x 13" " "	1.98
709-6	10" x 16" " "	2.16
1057-3	3/4" x 3" Cotter Pin	.01
950-32	Lag Screw, 3/4" x 4", per C.	8.40
950-33	Cast Washer, 3/4", per C.	9.50
950-34	Wrought Iron Washer, 3/4", each	.02
950-35	Bolt and Nut, 3/4" x 6", per C.	15.40
950-36	" " " 3/4" x 7" " "	15.40
950-37	" " " 3/4" x 8" " "	17.60



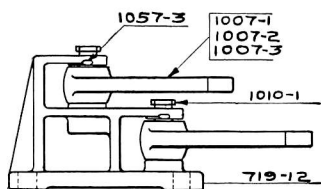
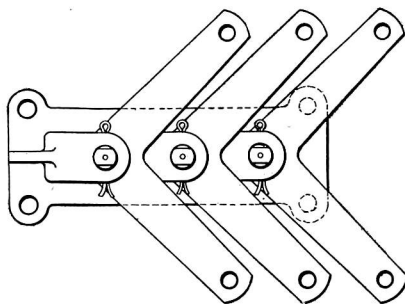
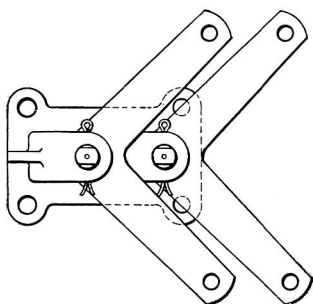
## R. S. A. "T" ARM AND 180 DEG. CRANKS



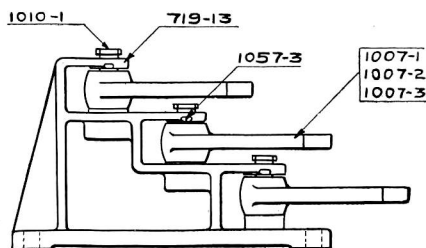
Trade No.	DESCRIPTION	List Price
710-1	One Way Horizontal Three Arm Crank, 9" x 9" x 9", complete as shown.	\$5.40
710-2	One Way Horizontal Three Arm Crank, 11 3/4" x 11 3/4" x 11 3/4", complete as shown.	5.78
710-3	One Way Horizontal Three Arm Crank, 14 1/2" x 14 1/2" x 14 1/2", complete as shown.	5.89
710-4	Two Way Horizontal Three Arm Crank, 9" x 9" x 9" and 11 3/4" x 11 3/4" x 11 3/4", complete as shown.	8.10
710-5	Two Way Horizontal Three Arm Crank, 11 3/4" x 11 3/4" x 11 3/4" and 14 1/2" x 14 1/2" x 14 1/2", complete as shown.	9.90
710-7	One Way 180 deg. Crank, 9" x 9", complete as shown.	3.60
710-8	" " " " " 11 3/4" x 11 3/4", complete as shown.	3.87
710-9	" " " " " 14 1/2" x 14 1/2", complete as shown.	4.14
710-10	Two " " " " " 9" x 9" and 11 3/4" x 11 3/4", complete as shown.	5.67
710-11	Two Way 180 deg. Crank, 11 3/4" x 11 3/4" and 14 1/2" x 14 1/2", complete as shown.	6.21
1008	One Way Stand Only	1.89
1009	Two " " " " "	2.16
1010-1	One Way Pin with Cotter	.32
1010-2	Two " " " " "	.40
1005-1	Three Arm Crank, 9" x 9" x 9"	3.42
1005-2	" " " " 11 3/4" x 11 3/4" x 11 3/4"	3.78
1005-3	" " " " 14 1/2" x 14 1/2" x 14 1/2"	4.77
1006-1	180 deg. Straight Arm Crank, 9" x 9"	1.53
1006-2	" " " " " 11 3/4" x 11 3/4"	1.80
1006-3	" " " " " 14 1/2" x 14 1/2"	2.61
1057-3	1/4" x 3" Cotter Pin	.01
950-32	Lag Screw, 3/4" x 4", per C.	8.40
950-33	Cast Washer, 3/4", per C.	9.50
950-34	Wrought Iron Washer, 3/4", each.	.02
950-35	Bolt and Nut, 3/4" x 6", per C.	15.40
950-36	" " " 3/4" x 7" " "	15.40
950-37	" " " 3/4" x 8" " "	17.60
1057-3	1/4" x 3" Cotter Pins, each.	.01
704-14	3/16" x 1 1/2" Cotter Pins, per C.	.90



## SEPARATE PIN HORIZONTAL CRANK STANDS



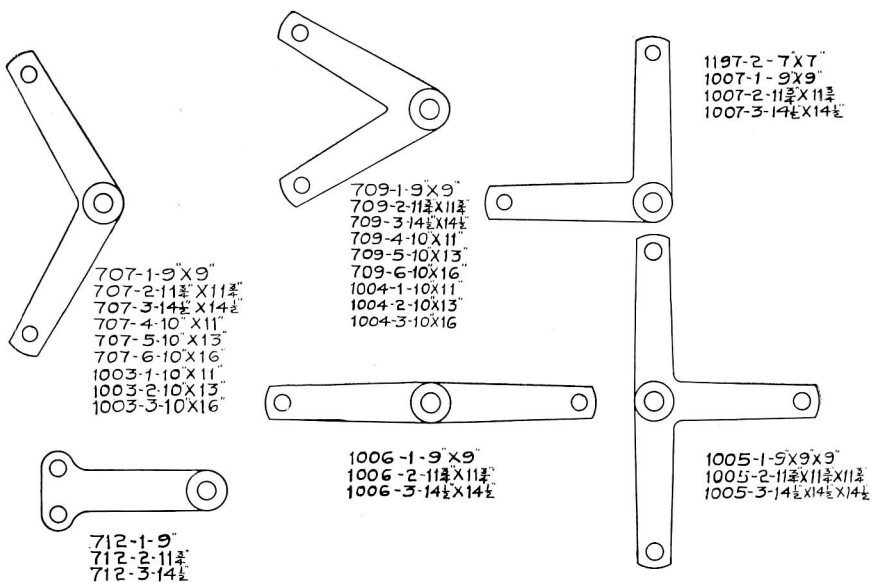
719-1  
719-2  
719-3



719-4  
719-5  
719-6

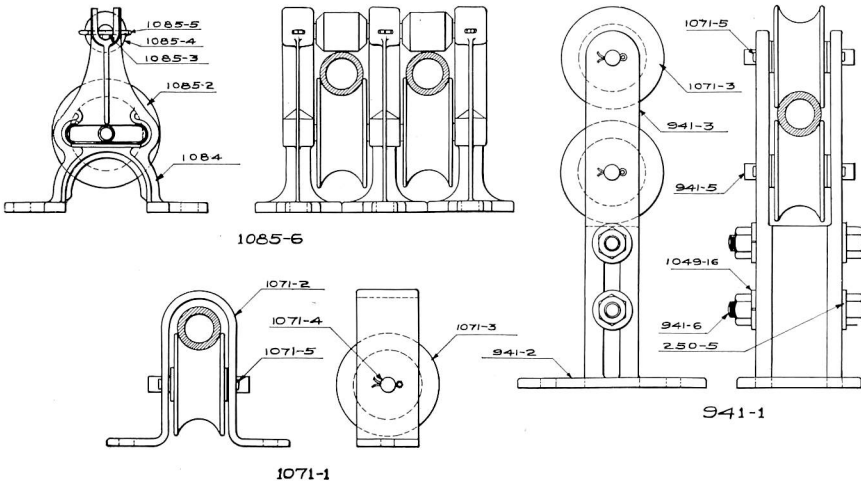
Trade No.	DESCRIPTION	List Price
719-1	Two Way Horizontal Crank Stand with 9" x 9" Cranks...	\$6.57
719-2	" " " " " " 11 3/4" x 11 3/4" Cranks	7.11
719-3	" " " " " " 14 1/2" x 14 1/2" " "	8.19
719-4	Three " " " " " " 9" x 9" " "	10.08
719-5	" " " " " " 11 3/4" x 11 3/4" " "	10.89
719-6	" " " " " " 14 1/2" x 14 1/2" " "	12.51
719-12	Two " " " " " Only	3.15
719-13	Three " " " " " " "	4.86
1007-1	R. S. A. 90 deg. 9" x 9" Crank	1.53
1007-2	" " " " 11 3/4" x 11 3/4" " "	1.80
1007-3	" " " " 14 1/2" x 14 1/2" " "	2.61
1010-1	Pin for Stands	.32
1057-3	3/4" x 3" Cotter Pins	.01
950-32	Lag Screw, 3/4" x 4"	8.40
950-33	Cast Washer for 3/4" Bolt, per C.	9.50
950-34	Wrought Iron Washer for 3/4" Bolt, each	.02
950-35	Bolt and Nut, 3/4" x 6", per C.	15.40
950-36	" " " 3/4" x 7" " "	15.40
950-37	" " " 3/4" x 8" " "	17.60

## CRANKS



Trade No.	DESCRIPTION	List Price
1197-2	R. S. A. 90 deg. Crank, 7" x 7".....	\$1.30
1007-1	" " " " " " 9" x 9".....	1.53
1007-2	" " " " " " 11 3/4" x 11 3/4".....	1.80
1007-3	" " " " " " 14 1/2" x 14 1/2".....	2.61
707-1	Obtuse Crank, 9" x 9".....	1.53
707-2	" " 11 3/4" x 11 3/4".....	1.80
707-3	" " 14 1/2" x 14 1/2".....	2.61
707-4	" " 10" x 11".....	1.80
707-5	" " 10" x 13".....	1.98
707-6	" " 10" x 16".....	2.16
709-1	Acute Crank, 9" x 9".....	1.53
709-2	" " 11 3/4" x 11 3/4".....	1.80
709-3	" " 14 1/2" x 14 1/2".....	2.61
709-4	" " 10" x 11".....	1.80
709-5	" " 10" x 13".....	1.98
709-6	" " 10" x 16".....	2.16
1005-1	R. S. A. Three Arm Crank, 9" x 9" x 9".....	3.42
1005-2	" " " " " " 11 3/4" x 11 3/4" x 11 3/4".....	3.78
1005-3	" " " " " " 14 1/2" x 14 1/2" x 14 1/2".....	4.77
1006-1	" " " 180 deg. Crank, 9" x 9".....	1.53
1006-2	" " " 11 3/4" x 11 3/4".....	1.80
1006-3	" " " 14 1/2" x 14 1/2".....	2.61
1003-1	" " " Obtuse Crank, 3/4", Offset in Long Arm, 10" x 11".....	1.98
1003-2	" " " " " " 3/4" " " " 10" x 13".....	2.16
1003-3	" " " " " " 3/4" " " " 10" x 16".....	2.34
1004-1	" " " Acute " " " " 3/4" " " " 10" x 11".....	1.98
1004-2	" " " " " " 3/4" " " " 10" x 13".....	2.16
1004-3	" " " " " " 3/4" " " " 10" x 16".....	2.34
712-1	Radial Crank, 9".....	1.80
712-2	" " 11 3/4".....	2.07
712-3	" " 14 1/2".....	2.34

## STRAP AND UNIVERSAL PIPE CARRIERS



Trade No.	DESCRIPTION	List Price
1085-1	R. S. A. One Way Universal Pipe Carrier complete.....	\$0.81
1085-6	“ “ Two “ “ “ “ “ “ .....	1.35
1085-7	“ “ Three “ “ “ “ “ “ .....	1.89
1085-8	“ “ Four “ “ “ “ “ “ .....	2.43
1085-9	“ “ Five “ “ “ “ “ “ .....	2.97
1085-10	“ “ Six “ “ “ “ “ “ .....	3.51
1085-11	“ “ Seven “ “ “ “ “ “ .....	4.05
1085-12	“ “ Eight “ “ “ “ “ “ .....	4.59
1084	“ “ Universal Pipe Carrier Stand .....	.31
1085-2	“ “ Bottom Roller.....	.18
1085-3	“ “ Pin.....	.04
1085-4	“ “ Top Roller.....	.04
1085-5	“ “ 1/4" x 1 1/2" Cotter Pins, per C.....	.88
1071-1	“ “ Strap Pipe Carrier complete.....	.45
1071-2	“ “ Stand for above.....	.21
1071-3	“ “ Sheave “ “ .....	.18
1071-4	“ “ Pin with Cotters for above.....	.09
1071-5	“ “ 3/8" x 1" Cotter Pin, per C.....	.90
941-1	Adjustable Pipe Carrier complete.....	2.34
941-2	Stand.....	1.04
941-3	Adjustable Arm.....	.38
941-5	Pin.....	.04
941-6	1/2" x 4" Square Hexagon Head Bolt and Nut.....	.07
1049-16	1/2" Lock Washer.....	.02
250-5	1/2" Washer.....	.01
1620-47	1/2" x 3" Lag Screws.....	.06
1085-13	1/2" x 2 1/2" “ “ .....	.07
605-28	5/8" x 4" “ “ .....	.08

Style No. 1085 Universal Pipe Carriers can be furnished up to Thirty Way.  
Prices on application.





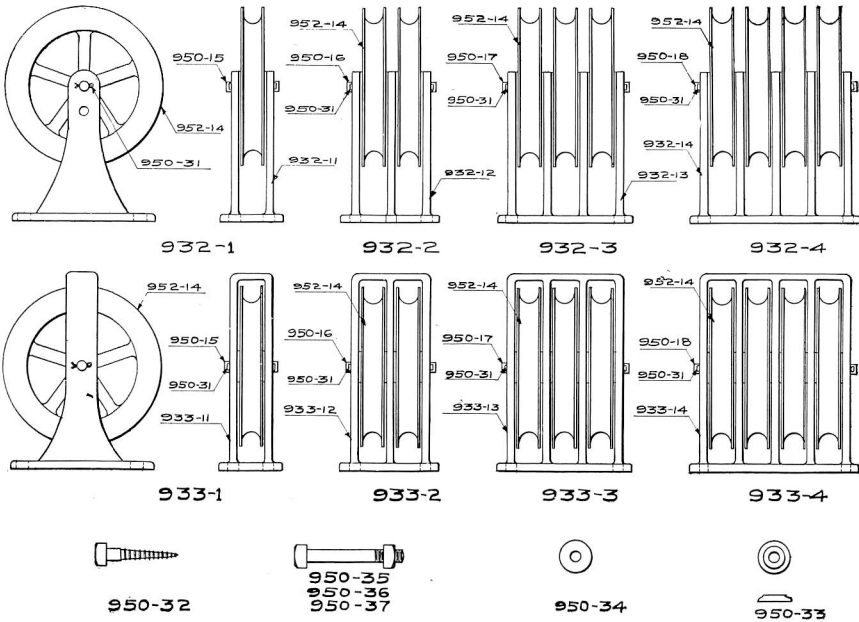






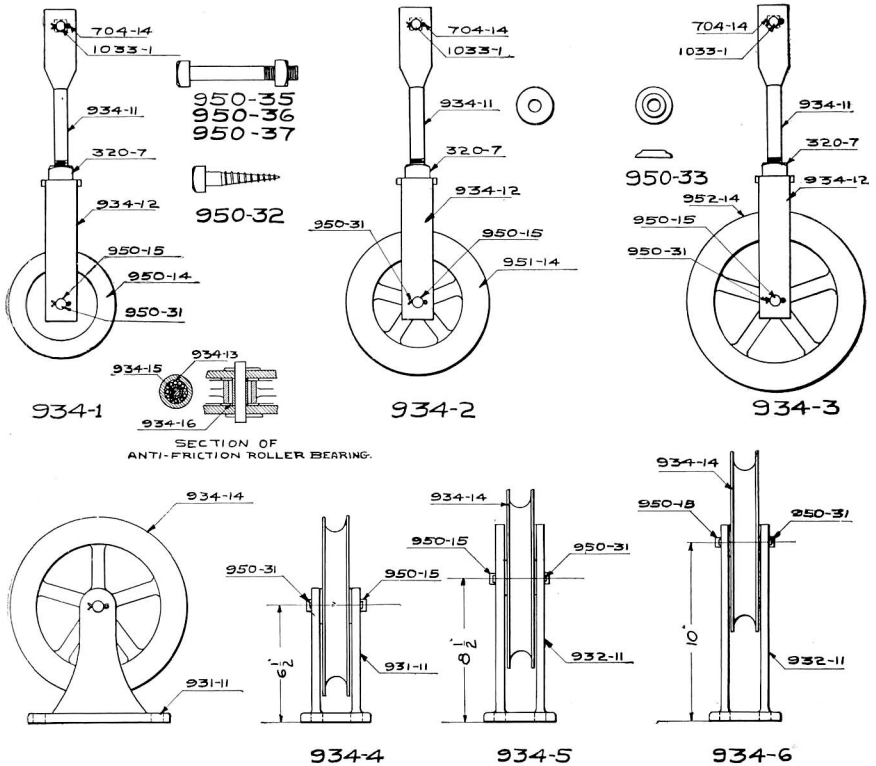


## VERTICAL WHEELS



Trade No.	DESCRIPTION	List Price
932-1	One Way 8½" or 10" Stand, 10" Vertical Wheel.....	\$1.98
932-2	Two " 8½" " 10" " 10" " " .....	3.19
932-3	Three " 8½" " 10" " 10" " " .....	4.40
932-4	Four " 8½" " 10" " 10" " " .....	5.61
933-1	One " 6½" Stand, 10" Vertical Wheels.....	1.54
933-2	Two " 6½" " 10" " " " .....	2.64
933-3	Three " 6½" " 10" " " " .....	3.74
933-4	Four " 6½" " 10" " " " .....	4.84
932-11	One " 8½" " " .....	1.32
932-12	Two " 8½" " " .....	1.87
932-13	Three " 8½" " " .....	2.42
932-14	Four " 8½" " " .....	2.97
933-11	One " 6½" " " .....	.88
933-12	Two " 6½" " " .....	1.32
933-13	Three " 6½" " " .....	1.76
933-14	Four " 6½" " " .....	2.20
952-14	Ten Inch Wheel.....	.53
950-15	One Way Pin.....	.05
950-16	Two " " .....	.06
950-17	Three " " .....	.07
950-18	Four " " .....	.08
950-31	Cotter Pin Only, ⅛" x 1¼" for Pins, per C.....	.96
950-32	Lag Screw, ¾" x 4", per C.....	8.40
950-33	Cast Washer for ¾" Bolts, per C.....	9.50
950-34	Wrought Iron Washer for ¾" Bolts, each.....	.02
950-35	Bolt and Nut, ¾" x 6", per C.....	15.40
950-36	" " " ¾" x 7" " " .....	15.40
950-37	" " " ¾" x 8" " " .....	17.60

## VERTICAL CHAIN WHEEL



Trade No.	DESCRIPTION	List Price
934-1	Gain Stroke Wheel, 6".....	\$2.02
934-2	"    "    "    8".....	2.11
934-3	"    "    "    10".....	2.32
934-4	One Way 10" Vertical Wheel, 6½" Stand, Anti-Friction.....	4.00
934-5	"    "    "    10"    "    8".....	4.18
934-6	"    "    "    10"    "    10".....	4.49
934-11	Jaw for Gain Stroke Wheel.....	.84
934-12	Bridle for Gain Stroke Wheel.....	.68
950-15	Pin.....	.05
1033-1	Jaw Pin, ⅝" x 2¼", with Cotter.....	.11
704-14	⅞" x 1½" Cotter Pin, per C.....	.90
320-7	¾" Square Nuts, per C.....	2.70
950-14	6" Wheel.....	.21
951-14	8"    ".....	.31
952-14	10"    ".....	.53
931-11	6½" One Way Stand.....	.70
932-11	8½" and 10" One Way Stand.....	1.32
934-13	Steel Roller.....	.05
934-15	Inner Bushing.....	.60
934-16	Special Washer.....	.05
934-14	10" Anti Friction Wheel.....	.53
950-31	Cotter Pin Only, ⅝" x 1½" for Pins, per C.....	.96
950-32	Lag Screw, ¾" x 4", per C.....	8.40
950-33	Cast Washer for ¾" Bolts, per C.....	9.50
950-34	Wrought Iron Washer for ¾" Bolts, each.....	.02
950-35	Bolt and Nut, ¾" x 6", per C.....	15.40
950-36	"    "    ¾" x 7", per C.....	15.40
950-37	"    "    ¾" x 8", per C.....	17.60

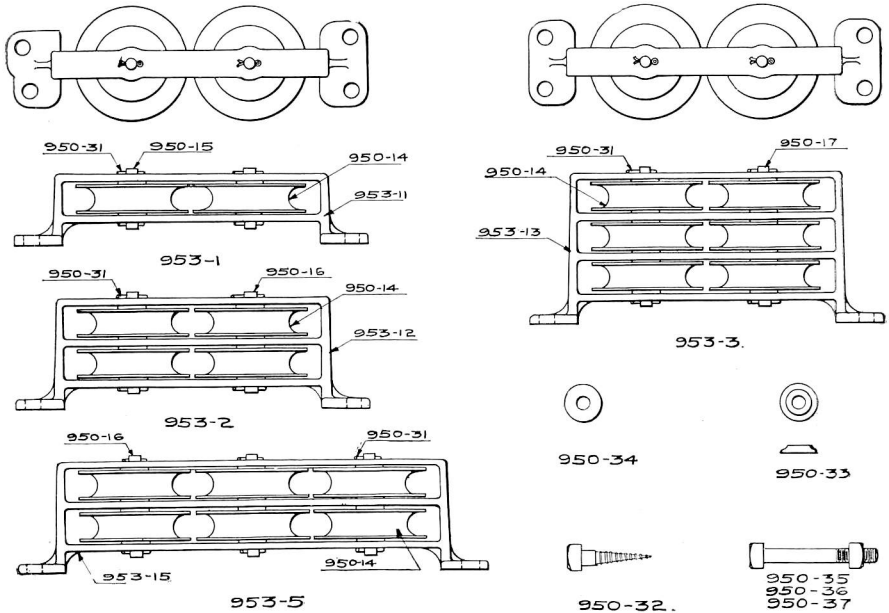






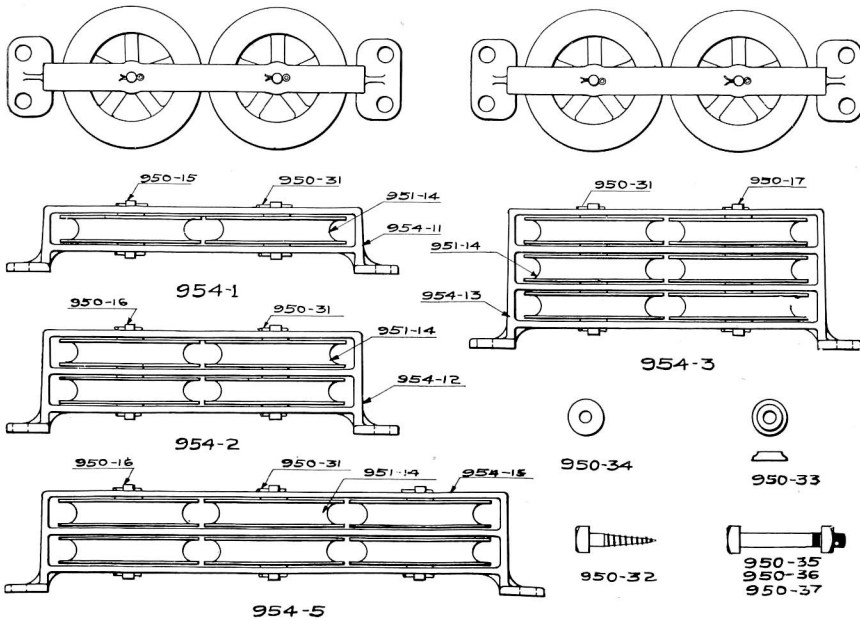


## HORIZONTAL TANDEM WHEELS



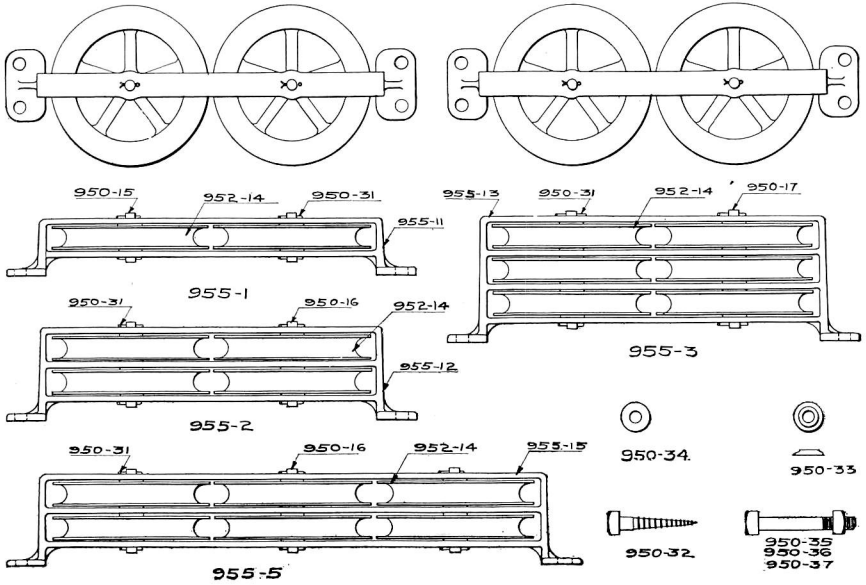
Trade No.	DESCRIPTION	List Price
953-1	Two Way 1 High 6" Horizontal Tandem Wheel.....	\$2.60
953-2	Four " 2 " 6" " " " ".....	3.19
953-3	Six " 3 " 6" " " " ".....	4.25
953-4	Eight " 4 " 6" " " " ".....	5.50
953-5	Six " 2 " 6" " " " ".....	4.73
953-6	Eight " 2 " 6" " " " ".....	6.29
953-11	Two Way Stand.....	1.80
953-12	Four " " " ".....	2.05
953-13	Six " " 3 High.....	2.51
953-14	Eight " " 4 ".....	3.61
953-15	Six " " 2 " ".....	2.78
953-16	Eight " " 2 " ".....	3.73
950-14	Six Inch Wheel.....	.21
950-15	Pin for 953-1.....	.05
950-16	" " 953-2, 953-5 and 953-6.....	.06
950-17	" " 953-3.....	.07
950-18	" " 953-4.....	.08
950-31	Cotter Pin Only, 1/8" x 1 1/4" for Pins, per C.....	.96
950-32	Lag Screw, 3/4" x 4", per C.....	8.40
950-33	Cast Washer for 3/4" Bolts, per C.....	9.50
950-34	Wrought Iron Washer for 3/4" Bolts, each.....	.02
950-35	Bolt and Nut, 3/4" x 6", per C.....	15.40
950-36	" " 3/4" x 7" " ".....	15.40
950-37	" " 3/4" x 8" " ".....	17.60

## HORIZONTAL TANDEM WHEELS



Trade No.	DESCRIPTION	List Price
954-1	Two Way 1 High 8" Horizontal Tandem Wheels.....	\$3.35
954-2	Four " 2 " 8" " " " .....	4.24
954-3	Six " 3 " 8" " " " .....	5.56
954-4	Eight " 4 " 8" " " " .....	7.24
954-5	Six " 2 " 8" " " " .....	6.26
954-6	Eight " 2 " 8" " " " .....	8.72
954-11	Two Way Stand.....	2.40
954-12	Four " " " " " .....	2.54
954-13	Six " " " " " .....	3.13
954-14	Eight " " " " " .....	4.02
954-15	Six " " 2 High.....	3.56
954-16	Eight " " 2 " " " .....	5.10
951-14	Eight Inch Wheel.....	.31
950-15	Pin for 954-1.....	.05
950-16	" " 954-2, 954-5 and 954-6.....	.06
950-17	" " 954-3.....	.07
950-18	" " 954-4.....	.08
950-31	Cotter Pin Only, 1/8" x 1 1/4" for Pins, per C.....	.96
950-32	Lag Screw, 3/4" x 4", per C.....	8.40
950-33	Cast Washer for 3/4" Bolts, per C.....	9.50
950-34	Wrought Iron Washer for 3/4" Bolts, each.....	.02
950-35	Bolt and Nut, 3/4" x 6", per C.....	15.40
950-36	" " " 3/4" x 7" " " .....	15.40
950-37	" " " 3/4" x 8" " " .....	17.60

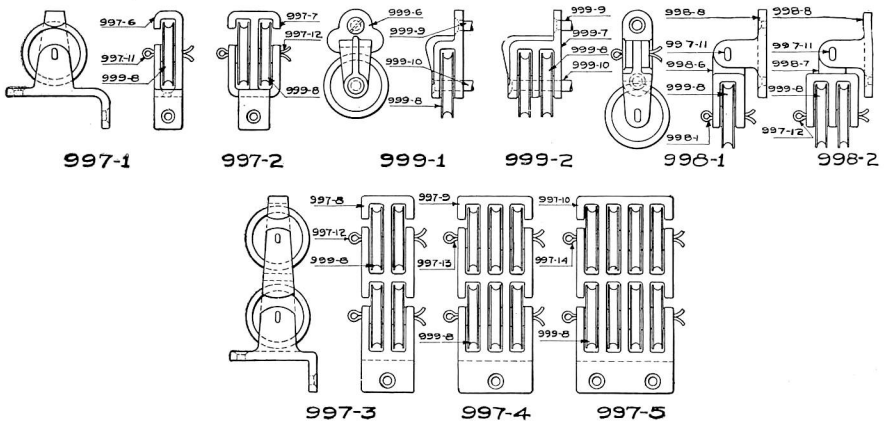
## HORIZONTAL TANDEM WHEELS



Trade No.	DESCRIPTION	List Price
955-1	Two Way 1 High 10" Horizontal Tandem Wheels.....	\$4.20
955-2	Four " 2 " 10" " " " .....	5.39
955-3	Six " 3 " 10" " " " .....	7.59
955-4	Eight " 4 " 10" " " " .....	9.50
955-5	Six " 2 " 10" " " " .....	8.10
955-6	Eight " 2 " 10" " " " .....	10.20
955-11	Two Way Stand .....	2.60
955-12	Four " " .....	2.86
955-13	Six " " .....	3.74
955-14	Eight " " .....	4.51
955-15	Six " " 2 High.....	4.15
955-16	Eight " " 2 .....	5.30
952-14	Ten Inch Wheel.....	.53
950-15	Pin for 955-1.....	.05
950-16	" " 955-2, 955-5 and 955-6.....	.06
950-17	" " 955-3.....	.07
950-18	" " 955-4.....	.08
950-31	Cotter Pin Only, $\frac{1}{8}$ " x $1\frac{1}{4}$ " for Pins, per C.....	.96
950-32	Lag Screw, $\frac{3}{4}$ " x 4", per C.....	8.40
950-33	Cast Washer for $\frac{3}{4}$ " Bolts, per C.....	9.50
950-34	Wrought Iron Washer for $\frac{3}{4}$ " Bolts, each.....	.02
950-35	Bolt and Nut, $\frac{3}{4}$ " x 6", per C.....	15.40
950-36	" " " $\frac{3}{4}$ " x 7" " ".....	15.40
950-37	" " " $\frac{3}{4}$ " x 8" " ".....	17.60

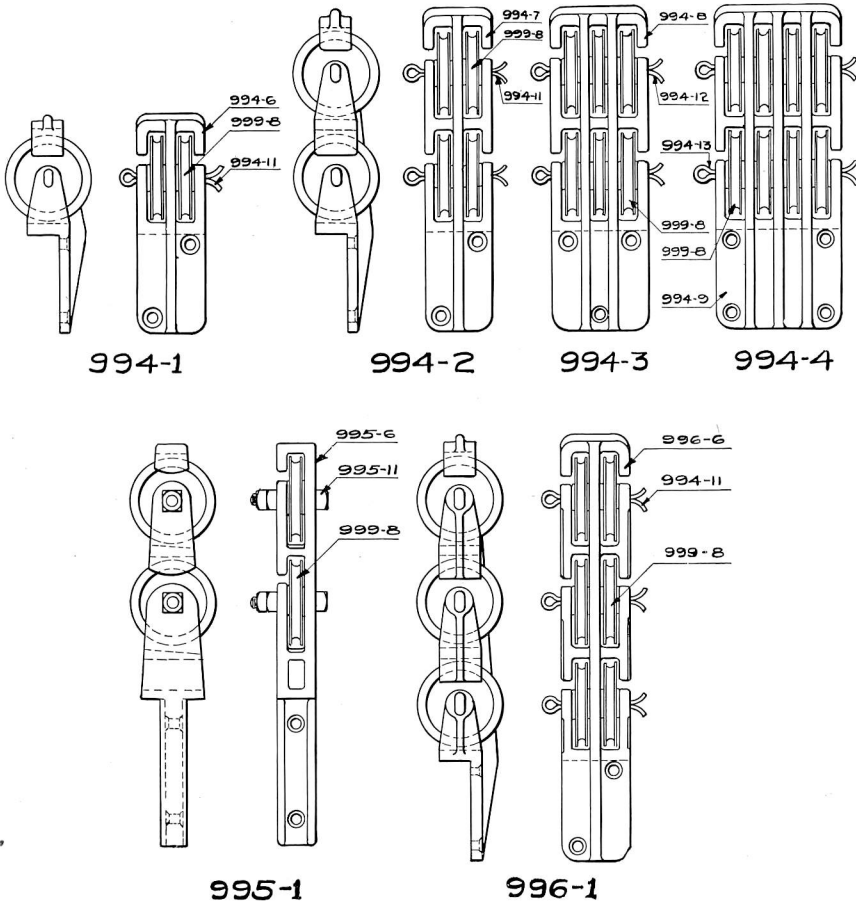


## WIRE CARRIERS



Trade No.	DESCRIPTION	List Price
997-1	One Way Wire Carrier.....	\$0.10
997-2	Two " " ".....	.18
997-3	Four " " ".....	.31
997-4	Six " " ".....	.40
997-5	Eight " " ".....	.53
997-6	One Way Stand.....	.06
997-7	Two " " ".....	.08
997-8	Four " " ".....	.13
997-9	Six " " ".....	.18
997-10	Eight " " ".....	.29
997-11	1/4" x 1 1/2" Cotter Pin for One Way Stand, per C.....	.88
997-12	1/4" x 2" " " " Two and Four Way Stand, per C....	.88
997-13	1/4" x 3" " " " Six Way Stand, per C.....	.88
997-14	1/4" x 4" " " " Eight " " ".....	.88
998-1	Angle Wire Carrier complete, One Way, each.....	.18
998-2	Two " " ".....	.29
998-6	One Way Stand Only, each.....	.06
998-7	Two " " ".....	.06
998-8	Bracket for 998-1 or 998-2, each.....	.06
999-1	Side Wire Carrier complete with Wood Screws, One Way, each.....	.11
999-2	Two " " ".....	.15
999-6	Stand for 999-1, each.....	.06
999-7	" " " 999-2 ".....	.06
999-8	2" Wire Pulley for Wire Carriers, each.....	.04
999-9	No. 14 x 1 1/4" Wood Screw, per C.....	.88
999-10	No. 14 x 2 1/2" " " ".....	.88

## WIRE CARRIERS



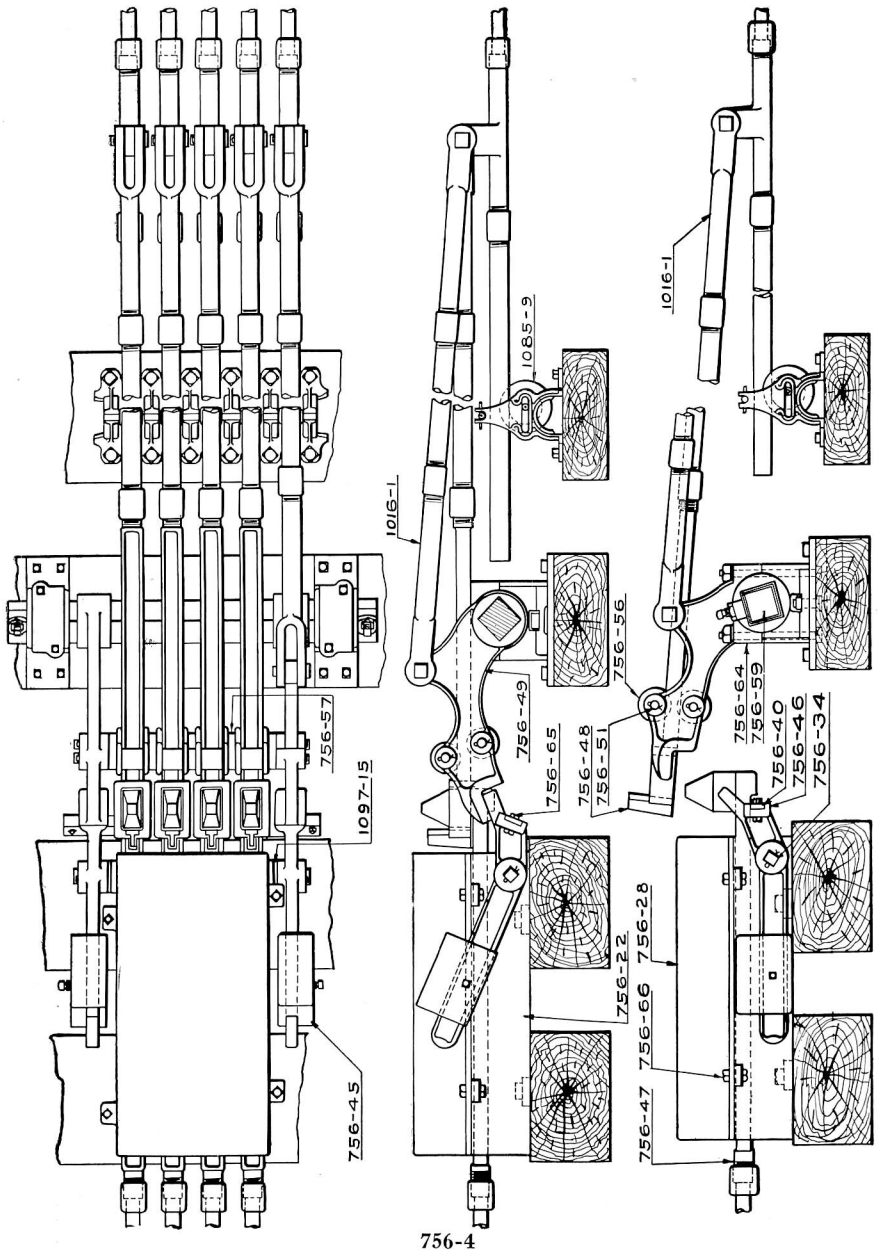
Trade No.	DESCRIPTION	List Price
994-1	Two Way Wire Carrier complete.....	\$0.20
994-2	Four " " " " .....	.39
994-3	Six " " " " .....	.58
994-4	Eight " " " " .....	.75
994-6	Two Way Stand.....	.11
994-7	Four " " .....	.21
994-8	Six " " .....	.31
994-9	Eight " " .....	.37
994-11	$\frac{1}{4}$ " x 2" Cotter Pin for Two Way and Four Way Stand, per C .....	.88
994-12	$\frac{1}{4}$ " x 3" " " " Six " Stand, per C.....	.88
994-13	$\frac{1}{4}$ " x 4" " " " Eight " " " .....	.88
995-1	Two Way Wire Carrier complete.....	.33
995-6	Stand Only.....	.13
995-11	Special Bolts $\frac{7}{8}$ " x $1\frac{5}{8}$ " with Two Nuts, each.....	.05
996-1	Six Way Wire Carrier complete.....	.58
996-6	Stand Only .....	.31
999-8	2" Wire Pulley for above Stands.....	.04







## MULTIPLE BRIDGE COUPLER AND LOCK



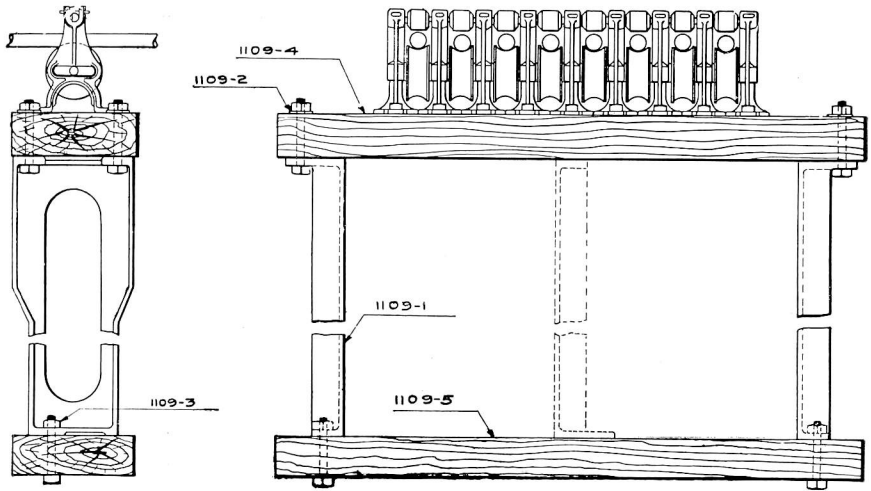


## MULTIPLE BRIDGE COUPLER AND LOCK

Trade No.	DESCRIPTION	List Price
756-4	Four Way Multiple Bridge Lock and Coupler, complete as shown . . . . .	\$63.25
756-3	Same as above except Two Way . . . . .	46.25
756-6	“ “ “ “ Six “ . . . . .	80.02
756-8	“ “ “ “ Eight “ . . . . .	98.56
756-10	“ “ “ “ Ten “ . . . . .	115.06
756-12	“ “ “ “ Twelve Way . . . . .	132.06
756-21	Base for Two Way Bridge Coupler and Lock . . . . .	4.00
756-22	“ “ Four “ “ “ “ . . . . .	6.98
756-23	“ “ Six “ “ “ “ . . . . .	10.23
756-24	“ “ Eight “ “ “ “ . . . . .	13.47
756-25	“ “ Ten “ “ “ “ . . . . .	15.23
756-26	“ “ Twelve Way “ “ “ “ . . . . .	18.38
756-27	Cover for Two Way Bridge Coupler and Lock . . . . .	1.75
756-28	“ “ Four “ “ “ “ . . . . .	4.95
756-29	“ “ Six “ “ “ “ . . . . .	8.41
756-30	“ “ Eight “ “ “ “ . . . . .	9.62
756-31	“ “ Ten “ “ “ “ . . . . .	11.38
756-32	“ “ Twelve Way “ “ “ “ . . . . .	14.84
756-33	Shaft with Cotter Pins for Two Way Lock Bar Counterweight Lever . . . . .	.75
756-34	Same as above except Four Way . . . . .	1.15
756-35	“ “ “ “ Six “ . . . . .	1.70
756-36	“ “ “ “ Eight “ . . . . .	1.98
756-37	“ “ “ “ Ten “ . . . . .	2.31
756-38	“ “ “ “ Twelve Way . . . . .	2.86
756-39	Lock Bar for Two Way Bridge Lock or Coupler . . . . .	.40
756-40	Same as above except Four Way . . . . .	.55
756-41	“ “ “ “ Six “ . . . . .	.99
756-42	“ “ “ “ Eight “ . . . . .	1.06
756-43	“ “ “ “ Ten “ . . . . .	1.26
756-44	“ “ “ “ Twelve Way . . . . .	1.70
1097-15	Pushing for Lock Bar Shaft . . . . .	.50
756-45	Counterweight for Lock Bar Lever with Set Screw . . . . .	.66
756-46	Lock Bar Lever . . . . .	1.54
756-47	Hook Slide Bar . . . . .	1.87
756-48	Engaging Bar . . . . .	1.76
756-49	Engaging Lever . . . . .	2.31
756-50	Two Way Guide Roller Shaft with Cotter Pins . . . . .	.29
756-51	Four “ “ “ “ “ “ . . . . .	.33
756-52	Six “ “ “ “ “ “ . . . . .	.38
756-53	Eight “ “ “ “ “ “ . . . . .	.44
756-54	Ten “ “ “ “ “ “ . . . . .	.49
756-55	Twelve Way “ “ “ “ “ “ . . . . .	.54
756-56	Guide Roller . . . . .	.26
756-57	“ “ Separator . . . . .	.14
756-58	Square Rocker Shaft for Two Way Bridge Coupler . . . . .	2.44
756-59	“ “ “ “ Four “ “ “ . . . . .	3.16
756-60	“ “ “ “ Six “ “ “ . . . . .	3.88
756-61	“ “ “ “ Eight “ “ “ . . . . .	4.60
756-62	“ “ “ “ Ten “ “ “ . . . . .	5.32
756-63	“ “ “ “ Twelve Way “ “ “ . . . . .	6.04
756-64	Low Rocker Shaft Bearing with Thrust Journal and Base Plate . . . . .	8.10
1016-1	R. S. A. Solid Jaw with Pin and Cotter . . . . .	1.44
1023	“ “ “ “ Lug with Tang Ends . . . . .	2.25
1083-7	“ “ “ “ Universal Three Way Pipe Carrier . . . . .	1.89
1083-9	“ “ “ “ Five “ “ “ . . . . .	2.97
1083-11	“ “ “ “ Seven “ “ “ . . . . .	4.05
1083-13	“ “ “ “ Nine “ “ “ . . . . .	5.13
1083-15	“ “ “ “ Eleven “ “ “ . . . . .	6.21
1083-17	“ “ “ “ Thirteen Way “ “ “ . . . . .	7.29
756-65	Bolt and Nut for Lock Bar . . . . .	.04
756-66	“ “ “ “ Cover to Base . . . . .	.04
950-32	¾" x 4" Lag Screws, per C. . . . .	8.40

Signal Pipe, Timber and Bolts for fastening are not included in list price.

## R. S. A. PIPE CARRIER FOUNDATION



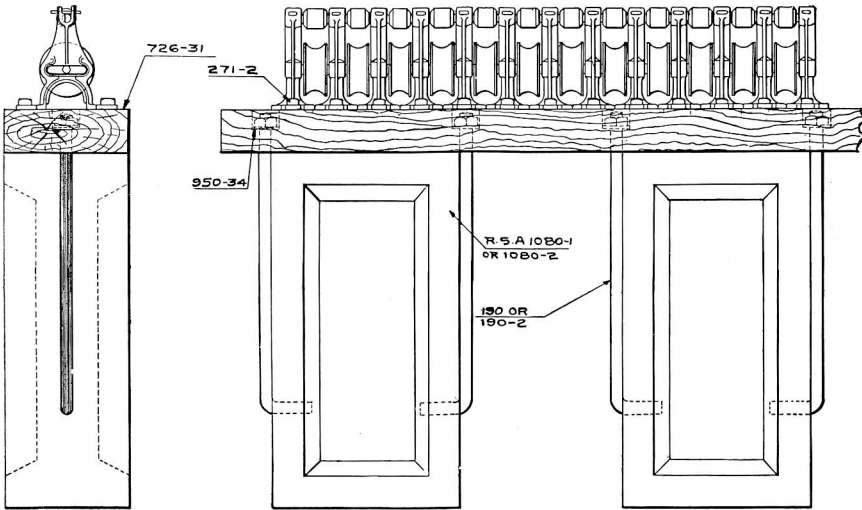
Trade No.	725-1	725-2	725-3	725-4	725-5	725-6	725-7	725-8	725-9	725-10
No. of Ways	1	2	3	4	5	6	7	8	9	10
No. of Iron Piers	2	2	2	2	2	2	2	2	2	2
Length of Top and Bottom	1'5½"	1'8¼"	1'11"	2'1¾"	2'4½"	2'7¾"	2'10"	3'0¾"	3'3½"	3'6¼"
No. of Bolts and Washers	6	6	6	6	6	6	6	6	6	6
List Price complete										

Trade No.	725-11	725-12	725-13	725-14	725-15	725-16	725-17	725-18	725-19	725-20
No. of Ways	11	12	13	14	15	16	17	18	19	20
No. of Iron Piers	2	3	3	3	3	3	3	3	3	3
Length of Top and Bottom	3'9"	3'11¾"	4'2½"	4'5¼"	4'8"	4'10¾"	5'1½"	5'4¼"	5'7"	5'9¾"
No. of Bolts and Washers	6	9	9	9	9	9	9	9	9	9
List Price complete										

Trade No.	725-21	725-22	725-23	725-24	725-25	725-26	725-27	725-28	725-29	725-30
No. of Ways	21	22	23	24	25	26	27	28	29	30
No. of Iron Piers	3	3	3	3	3	4	4	4	4	4
Length of Top and Bottom	6'0½"	6'3¼"	6'6"	6'8¾"	6'11½"	7'2¼"	7'5"	7'7¾"	7'10½"	8'1¼"
No. of Bolts and Washers	9	9	9	9	9	12	12	12	12	12
List Price complete										

Trade No.	DESCRIPTION	List Price
1109-1	Iron Pier.....	\$3.00
1109-3	½" x 4" Square Head Machine Bolt and Nut.....	.07
1109-2	½" Standard Iron Washer.....	.01
1109-4	Pier Top, 3" x 8", per ft.....	
1109-5	Pier Bottom, 3" x 8", per ft.....	

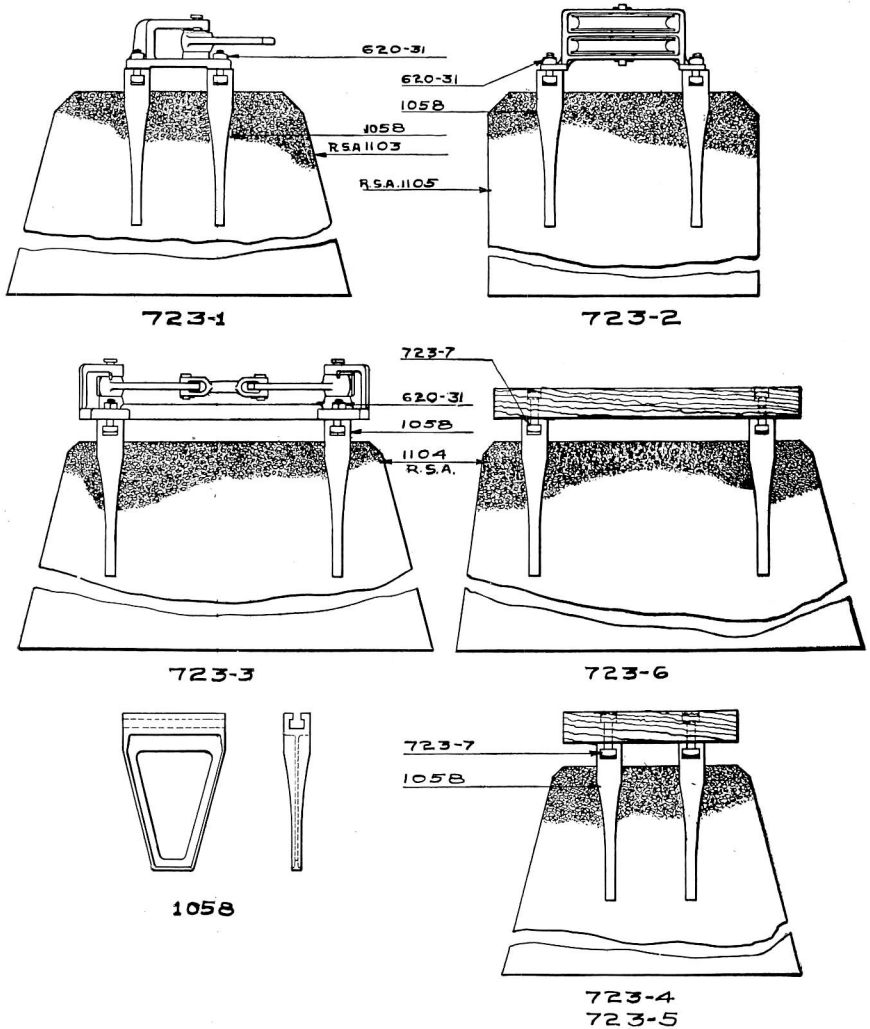
## R. S. A. CONCRETE PIPE CARRIER FOUNDATION



Trade No.	726-1	726-2	726-3	726-4	726-5	726-6	726-7	726-8	726-9	726-10
No. of Ways	1	2	3	4	5	6	7	8	9	10
No. of Concrete Piers	1	1	1	1	1	2	2	2	2	2
Length of Top	1'0"	1'2 $\frac{3}{4}$ "	1'5 $\frac{1}{2}$ "	1'8 $\frac{1}{4}$ "	1'11"	2'1 $\frac{3}{4}$ "	2'4 $\frac{1}{2}$ "	2'7 $\frac{1}{4}$ "	2'10"	3'3 $\frac{3}{4}$ "
No. of Anchor Bolts and Washers	2	2	2	2	2	4	4	4	4	4
List Price complete with 24" Concrete Pier										
List Price complete with 36" Concrete Piers										
Trade No.	726-11	726-12	726-13	726-14	726-15	726-16	726-17	726-18	726-19	726-20
No. of Ways	11	12	13	14	15	16	17	18	19	20
No. of Concrete Piers	2	2	2	2	2	2	2	2	3	3
Length of Top	3'3 $\frac{1}{2}$ "	3'6 $\frac{3}{4}$ "	3'9"	3'11 $\frac{3}{4}$ "	4'2 $\frac{1}{2}$ "	4'5 $\frac{3}{4}$ "	4'8"	4'10 $\frac{3}{4}$ "	5'1 $\frac{1}{2}$ "	5'4 $\frac{3}{4}$ "
List Price complete with 24" Concrete Piers										
No. of Anchor Bolts and Washers	4	4	4	4	4	4	4	4	6	6
List Price complete with 36" Concrete Piers										
Trade No.	726-21	726-22	726-23	726-24	726-25	726-26	726-27	726-28	726-29	726-30
No. of Ways	21	22	23	24	25	26	27	28	29	30
No. of Concrete Piers	3	3	3	3	3	3	3	3	3	3
Length of Top	5'7"	5'9 $\frac{3}{4}$ "	6'1 $\frac{1}{2}$ "	6'3 $\frac{3}{4}$ "	6'6"	6'8 $\frac{3}{4}$ "	6'11 $\frac{1}{2}$ "	7'2 $\frac{1}{4}$ "	7'5"	7'7 $\frac{3}{4}$ "
No. of Anchor Bolts and Washers	6	6	6	6	6	6	6	6	6	6
List Price complete with 24" Concrete Piers										
List Price complete with 36" Concrete Piers										

Trade No.	DESCRIPTION	List Price
1080-1	R. S. A. Concrete Pipe Carrier Foundation, 8" x 12" x 24", each.....	.....
190	Anchor Bolts, $\frac{3}{4}$ " x 18" with Square Nut, 2 $\frac{1}{2}$ " Hook for above, each.....	\$0.31
1080-2	R. S. A. Concrete Pipe Carrier Foundation, 8" x 12" x 36", each.....	.....
190-2	Anchor Bolts, $\frac{3}{4}$ " x 30", with Square Nut, 2 $\frac{1}{2}$ " Hook for above, each....	.41
726-31	Oak Top, 4" x 12", per ft.....	.....
950-34	$\frac{3}{4}$ " Wrought Iron Washer, each.....	.02

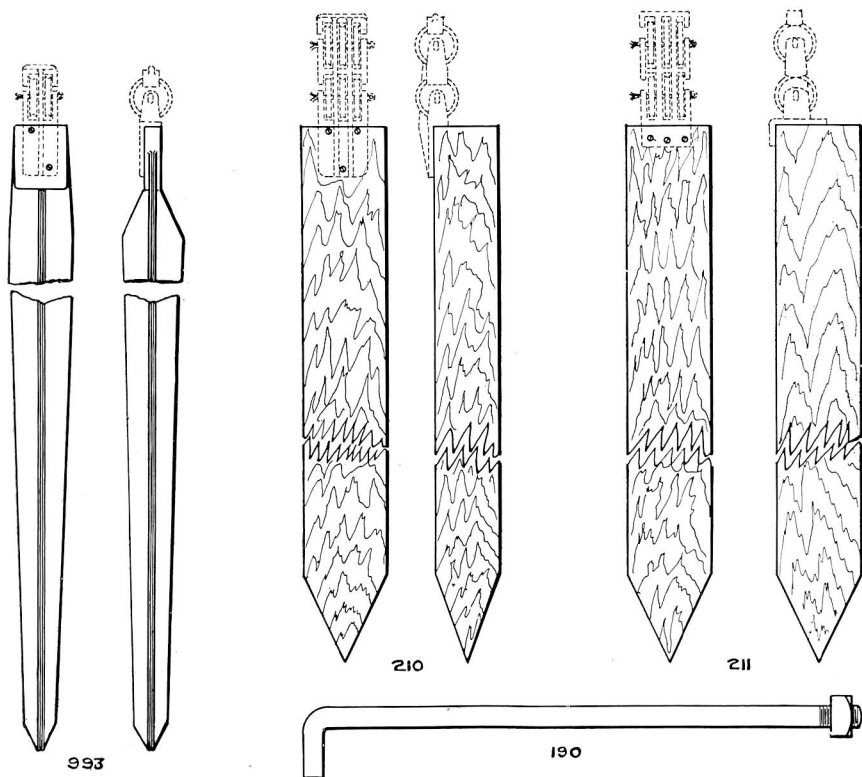
## FOUNDATIONS FOR CRANKS, WHEELS, COMPENSATORS



Trade No.	DESCRIPTION	List Price
723-1	Crank Foundations (Two Anchor Posts and Four Bolts Only).....	\$4.00
723-2	Wheel.....	4.00
723-3	Compensator Foundations (Two Anchor Posts and Four Bolts Only).....	4.00
723-4	Crank Foundations (Two Anchor Posts with Oak Top) $3\frac{3}{4}$ " x 12" x 2' 0" and Bolts.....	5.60
723-5	Wheel Foundation (Two Anchor Posts with Oak Top) $3\frac{3}{4}$ " x 12" x 2' 6" and Four Bolts.....	5.97
723-6	Compensator Foundation (Two Anchor Posts with Oak Top) $3\frac{3}{4}$ " x 12" x 3' 6" long and Four Bolts.....	6.72
1058	R. S. A. Anchor Post.....	1.75
620-31	$\frac{3}{4}$ " x 2 $\frac{1}{2}$ " Square Head Machine Bolts and Nuts.....	.13
723-7	$\frac{3}{4}$ " x 4 $\frac{1}{2}$ ".....	.15

Above prices do not include Concrete Piers, Cranks, Wheels and Compensators.

## WIRE CARRIER STAKES AND ANCHOR BOLTS



Trade No.	DESCRIPTION	List Price
993-1	Iron Wire Carrier Stake, Tapped and Drilled, complete with Screws for 994-1, 994-2, 996-2 Wire Carrier.....	\$1.25
993-2	Same as above except for 994-3 Wire Carrier.....	1.30
993-3	“ “ “ “ “ 994-4 “ “ “ “.....	1.35
993-4	“ “ “ “ “ 995-1, 998-1 or 998-2 Wire Carrier.....	1.25
993-5	“ “ “ “ “ 997-1, 997-2, 997-3 or 997-4 Wire Carrier.....	1.25
993-6	Same as above except for 999-1 or 999-2 Wire Carrier.....	1.25
210	Oak Wire Carrier Stake, 3' x 4' x 3' long.....	.....
210-1	“ “ “ “ “ 3' x 4' x 3' 6" long.....	.....
210-2	“ “ “ “ “ 3' x 4' x 4' long.....	.....
211	“ “ “ “ “ 4' x 4' x 3' “.....	.....
211-1	“ “ “ “ “ 4' x 4' x 3' 6" long.....	.....
211-2	“ “ “ “ “ 4' x 4' x 4' long.....	.....
190	Anchor Bolt $\frac{3}{4}$ " x 18" with Square Nut and 2 1/2" Hook.....	.31
190-1	“ “ “ $\frac{3}{4}$ " x 24" “ “ “ 2 1/2" “.....	.36
190-2	“ “ “ $\frac{3}{4}$ " x 30" “ “ “ 2 1/2" “.....	.41
190-3	“ “ “ $\frac{3}{4}$ " x 36" “ “ “ 2 1/2" “.....	.45