

1 9 1 4

CATALOGUE AND PRICE LIST

SECTION Q

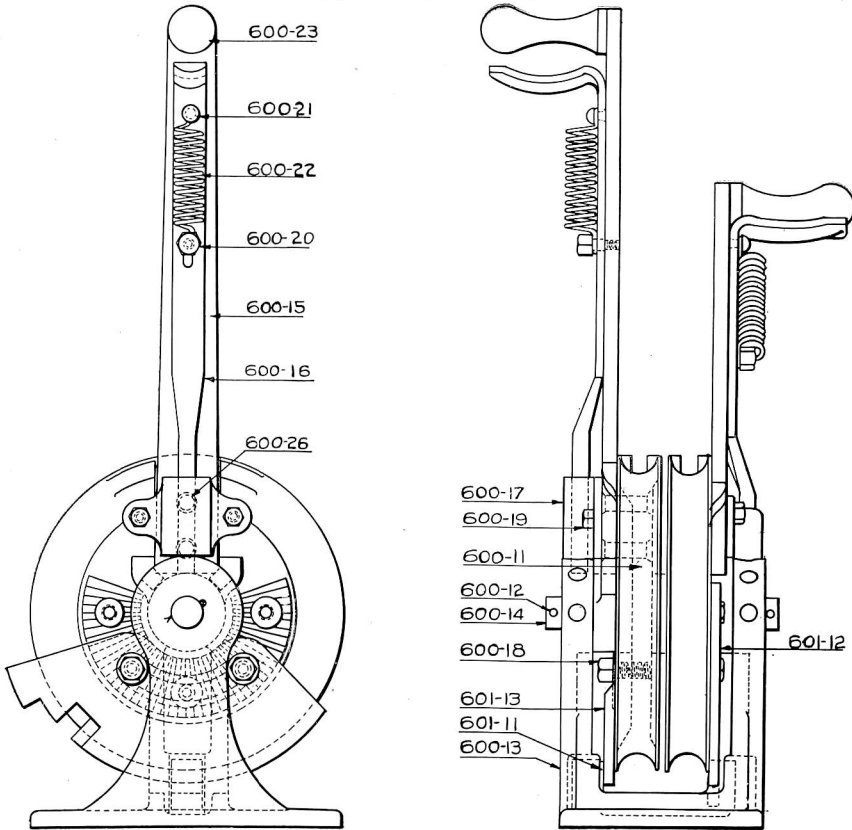
SIGNAL AND SWITCH
OPERATING LEVERS

Table
Wall
Floor
Ground



TWO LEVER TABLE OR WALL MACHINE

Style No. 600 and 601



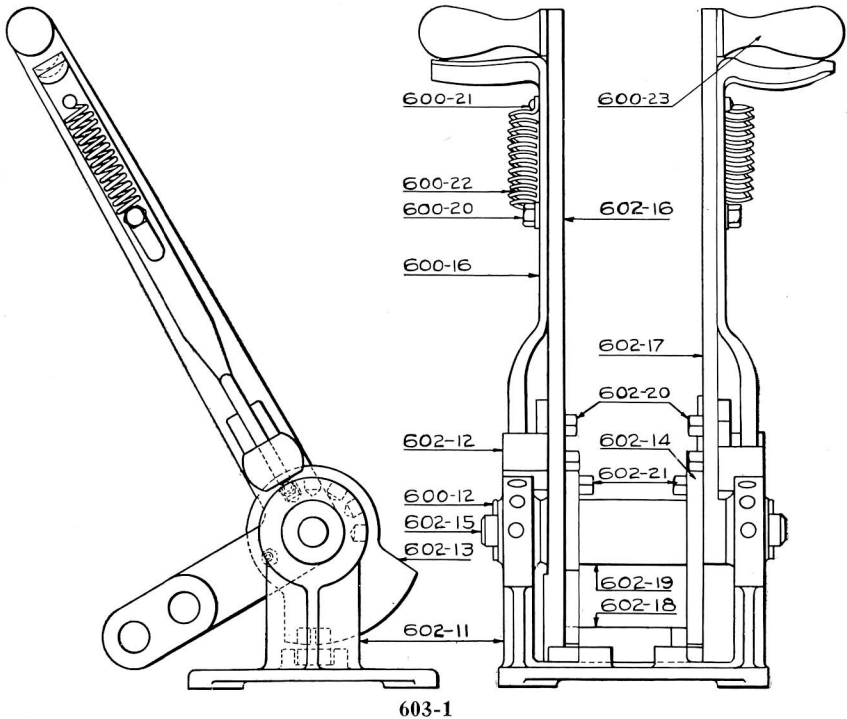
601-1

This Table Lever is suitable for Vertical or Horizontal Leadout as shown in connection with Train Order Signals. It is furnished for two or three positions and with or without locking. The levers are provided with Spring Latches to hold same in "Clear", "Caution" or "Stop" position. Two styles of locking can be furnished, viz.: Locking No. 1 where only one lever can be operated at any one time. Locking No. 2, one lever is locked and cannot be operated until the other lever is thrown.

Orders should specify positions desired and position machine will be used in.

Trade No.	DESCRIPTION	List Price
600-1	Double Table Lever, Two Position for Chain and Wire Operation, Vertical Leadout, complete	\$14.50
600-2	Double Table Lever, Three Position for Chain and Wire Operation, Vertical Leadout, complete	15.00
600-3	Double Wall Lever, Two Position for Chain and Wire Operation, Horizontal Leadout, complete	14.50
600-4	Double Wall Lever, Three Position for Chain and Wire Operation, Horizontal Leadout, complete	15.00
601-1	Double Table Lever, Two Position with No. 1 Locking for Chain and Wire Operation, Vertical Leadout, complete as shown	17.50
601-5	Same as above except with No. 2 Locking	17.50
601-2	Double Table Lever, Three Position with No. 1 Locking for Chain and Wire Operation, Vertical Leadouts, complete as shown	18.00
601-6	Same as above except with No. 2 Locking	18.00
601-3	Double Wall Lever, Two Position with No. 1 Locking for Chain and Wire Operation, Horizontal Leadout, complete	17.50
601-7	Same as above except with No. 2 Locking	17.50
601-4	Double Wall Lever, Three Position with No. 1 Locking for Chain and Wire Operation, Horizontal Leadout, complete	18.00
601-8	Same as above except with No. 2 Locking	18.00

TWO LEVER TABLE OR WALL MACHINE



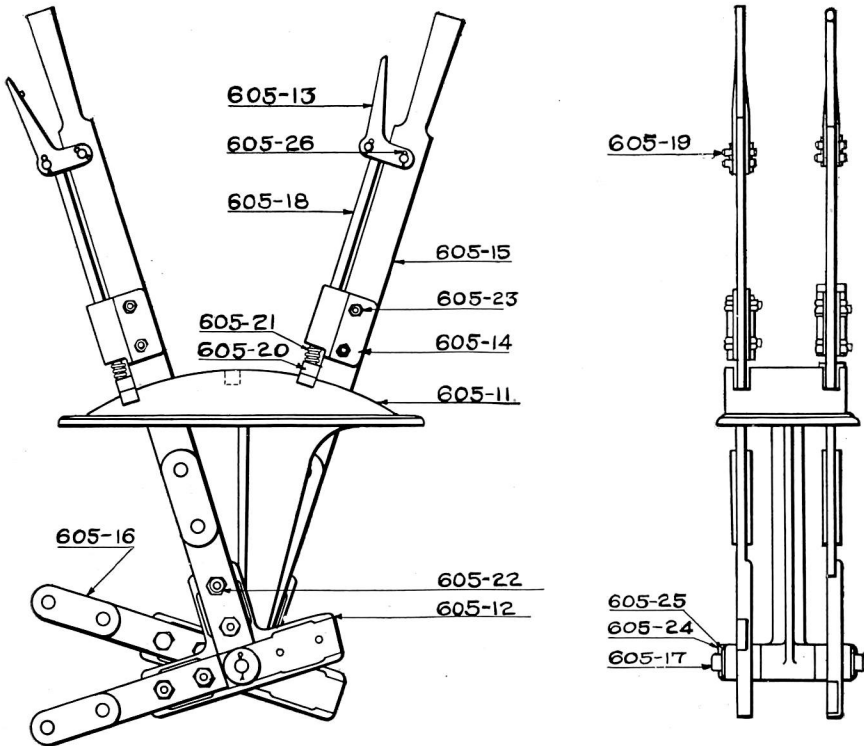
This machine is furnished for operation in two or three positions, for either table or wall use, with or without locking. The latches are spring operated, allowing Signal to be held in any of the three positions. The crank end is provided with two holes so as to allow either a short or a long stroke. Two styles of locking can be furnished, viz.: Locking No. 1 where only one lever can be operated at any one time, Locking No. 2, one lever is locked and cannot be operated until the other lever is thrown.

Orders should specify positions desired and position machine will be used in.

Trade No.	DESCRIPTION	List Price
602-1	Double Table Lever, Two Position Pipe Operation for Vertical Leadout, complete.....	\$13.75
602-2	Same as above except for Three Position.....	14.25
602-3	Double Wall Lever, Two Position Pipe Operation for Horizontal Leadout, complete.....	13.75
602-4	Same as above except for Three Position.....	14.25
603-1	Double Table Lever, Two Position with No. 1 Locking, Pipe Operation for Vertical Leadout, complete as shown.....	16.75
603-5	Same as above except with No. 2 Locking.....	16.75
603-2	Double Table Lever, Three Position with No. 1 Locking, Pipe Operation for Vertical Leadout, complete as shown.....	17.25
603-6	Same as above except with No. 2 Locking.....	17.25
603-3	Double Wall Lever, Two Position with No. 1 Locking, Pipe Operation for Horizontal Leadout, complete.....	16.75
603-7	Same as above except with No. 2 Locking.....	16.75
603-4	Double Wall Lever, Three Position with No. 1 Locking, Pipe Operation for Horizontal Leadout, complete.....	17.25
603-8	Same as above except with No. 2 Locking.....	17.25

TABLE MACHINE

Style No. 605



605-4

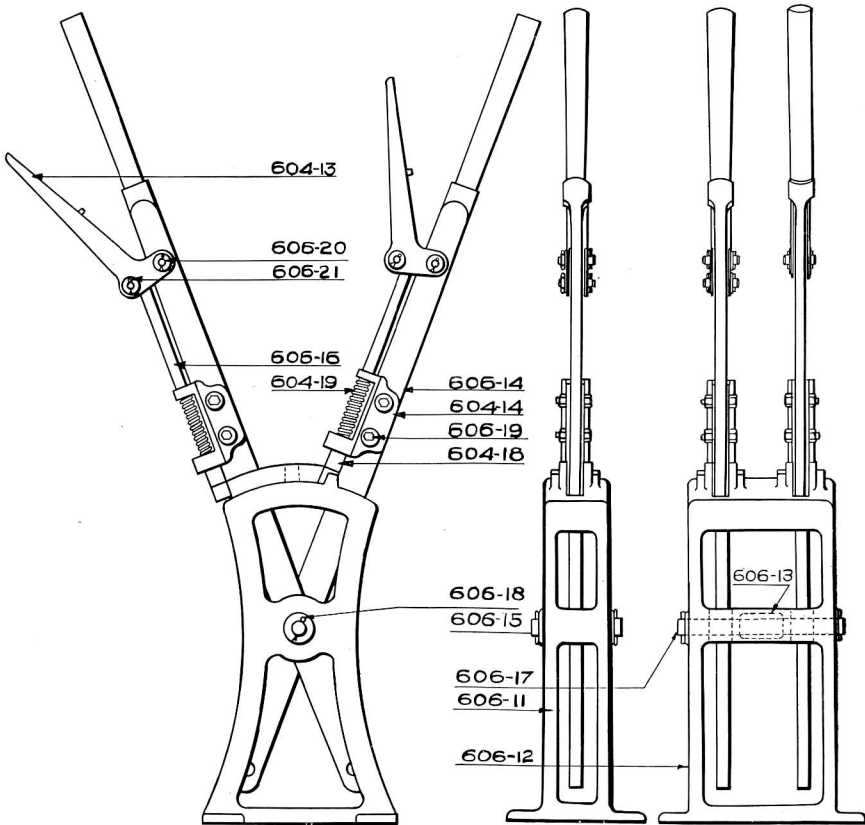
This type of Table Machine is used in connection with Pipe or Wire Operated Train Order or Block Signals, and may be used for Vertical or Horizontal Leadouts. When used for Wire Operated Signals with Vertical Leadout (as shown on Signal No. 2114) an extra Tail Lever is required. The Machine is simple and strong and can be attached directly into Operator's Table, thus requiring no extra space.

The Tail Lever shown may be used in any of the three positions provided for and as shown on Signals No. 2105, 2112 and 2115, thus making practically a "Universal" Table Lever Machine for Pipe or Wire Operation.

Trade No.	DESCRIPTION	List Price
605-4	Double Table Machine complete as shown, for Three Position	\$21.42
605-3	Same as above except for Two Position.	19.62
605-2	Single Table Machine, One Lever Only, for Three Position. .	14.89
605-1	Same as 605-2 except for Two Position.	13.09
605-16	Extra Tail Lever, each.	1.00

FLOOR LEVER MACHINE

Style No. 606



606-1 and 606-3

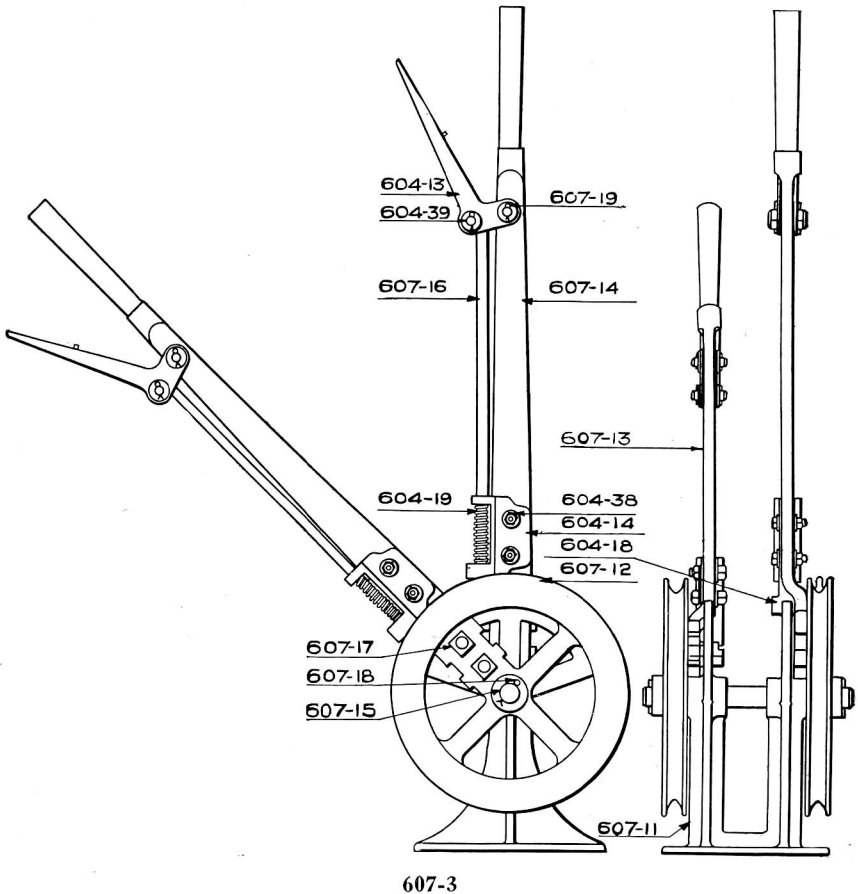
The machines above illustrated are especially adapted for operation of switches leading on to main line, outlying switches, derails, Train Order and Block Signals. By using Electric Locks and Indicators on these machines, the control of outlying switches and Signals are entirely under control of operator. Machine is built in single and double units and is furnished for two or three positions.

Trade No.	DESCRIPTION	List Price
606-1	Floor Machine, Single Lever, Two Positions.....	\$25.20
606-2	“ “ “ “ Three “	26.20
606-3	“ “ Two “ Two “	45.00
606-4	“ “ “ “ Three “	46.50

Above machines can be furnished with Electric Locks and Indicators where desired
Prices upon request.

FLOOR LEVER

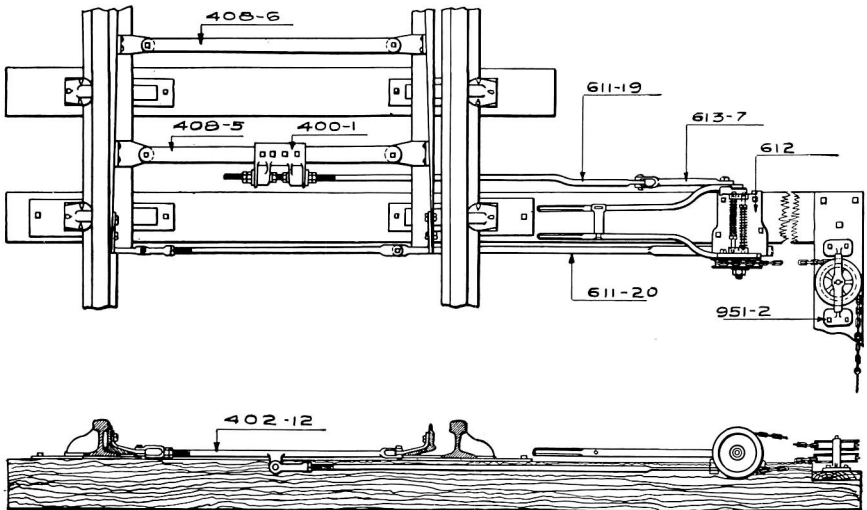
Style No. 607



This style Floor Lever is used for operation of Wire Operated Train Order or Block Signals for which purpose it is furnished for two or three positions. It is also extensively used for Wire Operated Highway Crossing Gates. The Latches are Spring Operated, so Lever may be locked in desired position. The Sheaves have ample clearance over base so chain leadouts may be vertical or horizontal.

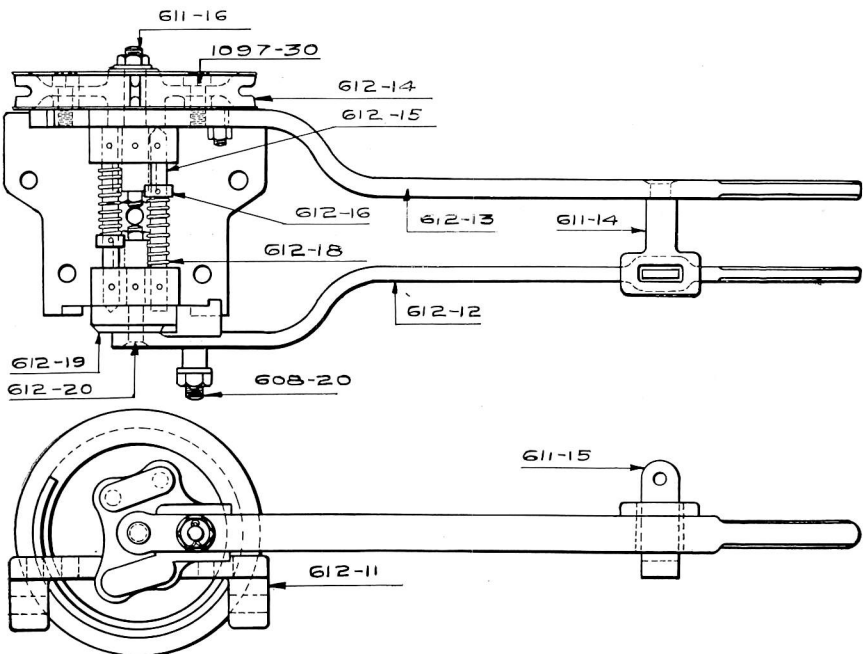
Trade No.	DESCRIPTION	List Price
607-1	Style No. 607 Floor Lever complete with One Lever Only for Two Positions.....	\$29.00
607-2	Same as above except for Three Positions.....	30.00
607-3	Style No. 607 Floor Lever complete as shown with Two Levers for Two Positions.....	44.00
607-4	Same as above for Three Positions.....	45.00

DOUBLE GROUND LEVER INTERLOCKED



Application of Ground Lever

612-1



612

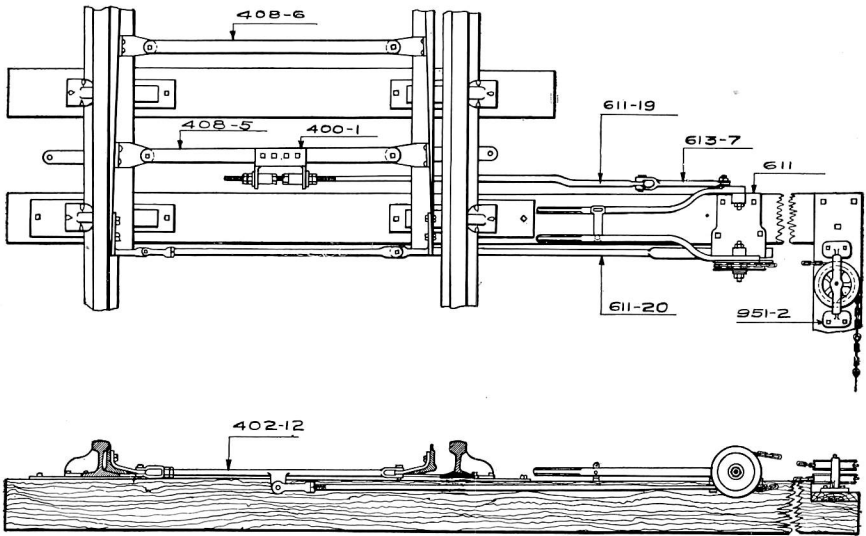


DOUBLE INTERLOCKED GROUND LEVER

This Lever is used for operating outlying switches with their associated Distant Signals, the Levers are so interlocked that the Lever operating the Distant Signal must be thrown before the Switch can be opened, and the Switch must be closed before the Distant Signal can be cleared. The Chain Wheel on the Signal Lever is of the Rim Lock Type and locks the switch in the closed position. No Chain, Wire, Rail Braces, Tie Plates or Timbers are included in list prices.

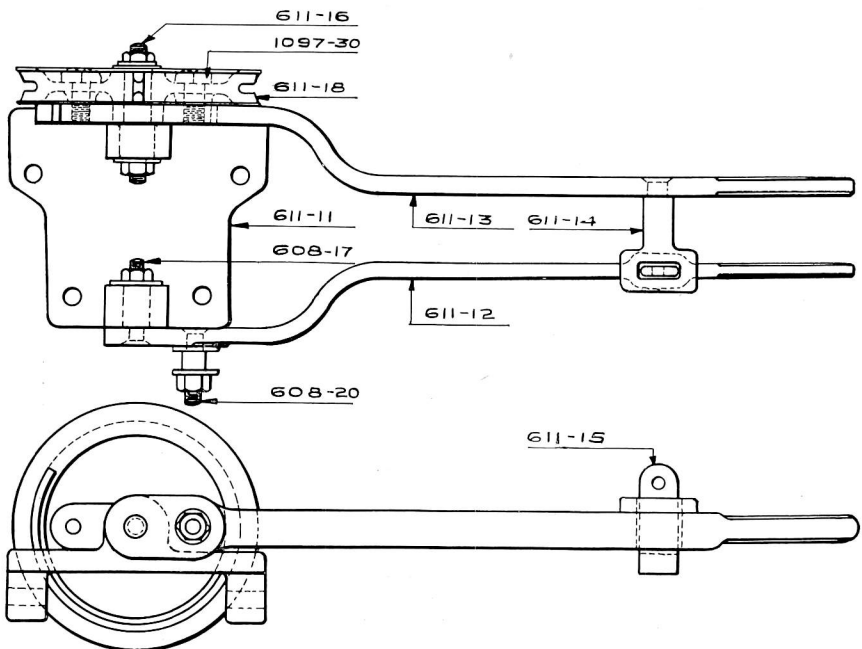
Trade No.	DESCRIPTION	List Price
612-1	Double Ground Lever complete as shown with Front Rod, Lock Rod, Throw Rod with Switch Adjustment, Tie Rods, Eye Rod and Chain Wheel.....	\$36.50
612	Double Ground Lever, complete as shown	5.85
612-11	“ “ “ Stand Only.....	4.30
612-12	Switch Throw Lever Only.....	4.30
612-13	Signal “ “	1.32
611-14	Cross Lock Lug.....	.45
611-15	Lock Lug.....	1.15
611-16	Stud for Signal Lever complete with Hexagon Nuts, Washers and Cotters.....	.63
612-20	Stud for Switch Lever complete with Hexagon Nut, Washer and Cotter.....	.45
608-20	Operating Stud complete with Hexagon Nut, Washers and Cotters.....	1.00
611-17	Stud Only for Signal Lever.....	.56
612-21	“ “ “ Switch Throw Lever35
608-16	Operating Stud Only.....	.08
419-8	$\frac{3}{4}$ " Standard Hexagon Nut02
950-34	$\frac{3}{4}$ " Iron Washer.....	.90
704-14	$\frac{3}{8}$ " x $1\frac{1}{2}$ " Cotter Pins, per C.....	4.32
612-14	Chain Wheel Only.....	.15
1097-30	$\frac{3}{4}$ " x 2" Hexagon Head Cap Screws for fastening Chain Wheel to Lever73
612-15	Locking Pin.....	.10
612-16	Collar and Dowel Pin for Spring Seat.....	1.15
612-18	Spring.....	1.02
612-19	Switch Lever Shoe.....	3.50
611-19	Throw Rod complete with six Hexagon Nuts.....	2.45
611-21	“ “ Only	4.82
611-20	Lock Rod complete with Screw Jaw, Hexagon Nut and Jaw Pin with Cotter.....	3.67
611-22	Lock Rod Only.....	.18
1002-5	$1\frac{1}{4}$ " Hexagon Nut $\frac{3}{4}$ " thick.....	.86
1020	R. S. A. Forged Screw Jaw.....	.11
1033-1	“ “ “ Jaw Pin with Cotter.....	5.42
613-7	Eye Rod with Solid Jaw End with Jaw Pin and Cotter....	1.87
951-2	Two Way Horizontal Chain Wheel Stand complete.....	5.68
400-1	Switch Adjustment complete with Bushings and Bolts for fastening to Tie Rods.....	8.50
408-5	Tie Rod complete with Switch Point Lugs drilled for Switch Adjustment.....	8.35
408-6	Tie Rod complete with Switch Point Lugs.....	7.90
402-12	Front Rod complete with Switch Point Lugs, Screw Jaw, Nut and Jaw Pins.....	8.40
950-32	Lag Screws $\frac{3}{4}$ " x 4", per C.....	9.50
950-33	Cast Washers $\frac{3}{4}$ ", per C.....	15.40
950-35	$\frac{3}{4}$ " x 6" Square Head Bolt and Nut, per C.....	15.40
950-36	$\frac{3}{4}$ " x 7" “ “ “ “ “ “ “	17.60
950-37	$\frac{3}{4}$ " x 8" “ “ “ “ “ “ “	

DOUBLE GROUND LEVER



Application of Ground Lever

611-1



611



DOUBLE GROUND LEVER

(Single Throw)

This Lever is used for operating outlying Switches and their associated Distant Signals. The Lever governing the Distant Signal must be thrown first, as the Cross Lock Lug prevents the Switch from being thrown until this is done. The Chain Wheel on the Lever is of the Rim Lock Type, locking the Switch in the closed position only. No Chain, Wire, Rail Braces, Tie Plates or Timbers are included in list prices.

Trade No.	DESCRIPTION	List Price
611-1	Ground Lever complete with Throw Rod, Eye Rod, Lock Rod, Front Rod, Tie Rod with Switch Adjustment, Tie Rod and Chain Wheel.....	\$32.30
611	Ground Lever complete as shown.....	5.58
611-11	“ “ Base Only.....	10.35
611-12	Switch Throw Lever Only.....	9.45
611-13	Signal “ “.....	1.32
611-14	Cross Lock Lug.....	.45
611-15	Lock Lug.....	1.15
611-16	Stud for Signal Lever complete with Hexagon Nuts, Washers and Couters.....	.54
608-17	Stud for Switch Lever complete with Hexagon Nuts, Washers and Couters.....	.45
608-20	Operating Stud complete with Hexagon Nut, Washers and Couters.....	1.00
611-17	Stud Only for Signal Lever.....	.44
608-14	“ “ “ Switch Throw Lever.....	.35
608-16	Operating Stud Only.....	.08
419-8	$\frac{3}{4}$ " Standard Hexagon Nut.....	.02
950-34	$\frac{3}{4}$ " Iron Washer.....	.90
704-14	$\frac{3}{8}$ " x $1\frac{1}{2}$ " Cotter Pin, per C.....	2.70
611-18	Chain Wheel Only.....	.15
1097-30	$\frac{3}{4}$ " x 2" Hexagon Cap Screws for fastening Chain Wheels to Lever.....	3.50
611-19	Throw Rod complete with six Hexagon Nuts.....	2.45
611-21	“ “ Only.....	4.82
611-20	Lock Rod complete with Screw Jaw, Nut and Jaw Pin.....	3.67
611-22	“ “ Only.....	.18
1002-5	$1\frac{1}{4}$ " Hexagon Nut, $\frac{3}{4}$ " thick.....	.86
1020	R. S. A. Forged Screw Jaw.....	8.40
950-32	Lag Screws $\frac{3}{4}$ " x 4", per C.....	9.50
950-33	Cast Washer $\frac{3}{4}$ ", per C.....	15.40
950-35	$\frac{3}{4}$ " x 6" Square Head Machine Bolt and Nut, per C.....	15.40
950-36	$\frac{3}{4}$ " x 7" “ “ “ “ “ “ “ “.....	17.60
950-37	$\frac{3}{4}$ " x 8" “ “ “ “ “ “ “ “.....	5.42
613-7	Eye Rod with Solid Jaw End and Pin and Cotter.....	1.87
951-2	Two Way 8" Horizontal Chain Wheel Stand complete with Wheels Pin and Couters.....	5.68
400-1	Switch Adjustment complete with Bushings and Bolts for fastening to Tie Rod.....	8.50
408-5	Tie Rod complete with Switch Point Lugs drilled for Switch Adjustment.....	8.35
408-6	Tie Rod complete with Switch Point Lugs.....	7.90
402-12	Front Rod complete with Switch Point Lugs, Screw Jaw, Nut and Jaw Pins.....	