

1914

CATALOGUE AND PRICE LIST

SECTION N

BRIDGE AND BRACKET SIGNALS

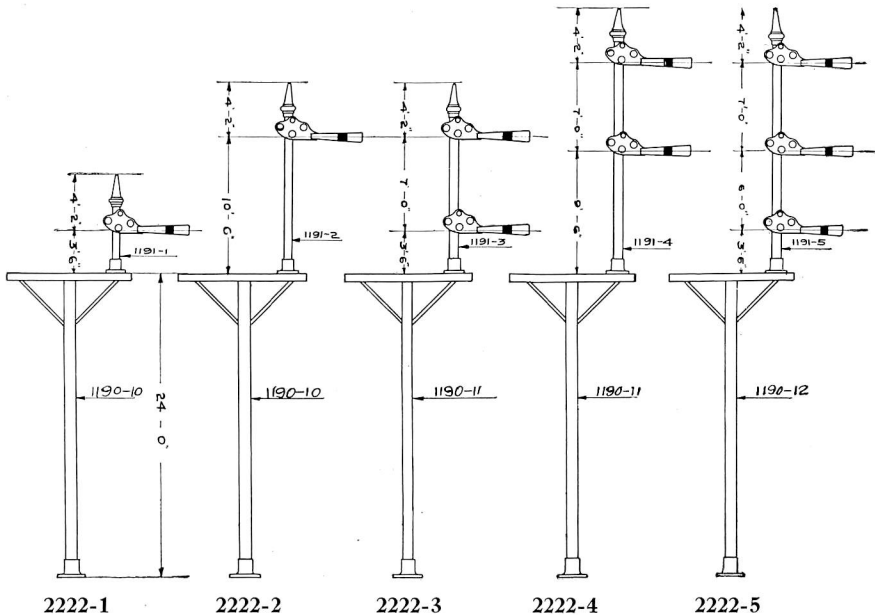
60 deg. Lower Quadrant Wire Operated

60 deg. Lower Quadrant Pipe Operated

90 deg. Upper Quadrant Wire Operated

90 deg. Upper Quadrant Pipe Operated

R. S. A. PIPE OPERATED BRACKET POST SIGNALS



Prices will be furnished upon request for any combination of Signals not given in the following list.

Trade No.	DESCRIPTION	List Price
2222-1	Bracket Post for Two Signals and Connections complete with One No. 1191-1 Low One Arm Bracket Signal.....	\$463.50
2222-2	Same as above except with One No. 1191-2 High One Arm Bracket Signal.....	481.50
2222-3	Bracket Post for Two Signals and Connections complete with One No. 1191-3 Low Two Arm Bracket Signal.....	531.00
2222-4	Same as above excepting with One No. 1191-4 High Two Arm Bracket Signal.....	549.00
2222-5	Bracket Post for Two Signals and Connections complete with One No. 1191-5 Three Arm Bracket Signal.....	598.50
2222-6	Bracket Post for Two Signals and Connections complete with Two No. 1191-1 Low One Arm Bracket Signals.....	562.50
2222-7	Same as above excepting with Two No. 1191-2 High One Arm Bracket Signals.....	598.50
2222-8	Bracket Post for Two Signals and Connections complete with Two No. 1191-3 Low Two Arm Bracket Signals.....	697.50
2222-9	Same as above excepting with Two No. 1191-4 High Two Arm Bracket Signals.....	733.50
2222-10	Bracket Post for Two Signals and Connections complete with Two No. 1191-5 Three Arm Bracket Signals.....	832.50
2222-11	Bracket Post for Two Signals and Connections complete with One No. 1191-1 Low One Arm and One No. 1191-3 Low Two Arm Bracket Signals.....	630.00
2222-12	Same as above except with One No. 1191-2 High One Arm and One No. 1191-4 High Two Arm Bracket Signal.....	666.00



R. S. A. PIPE OPERATED BRACKET POST SIGNALS

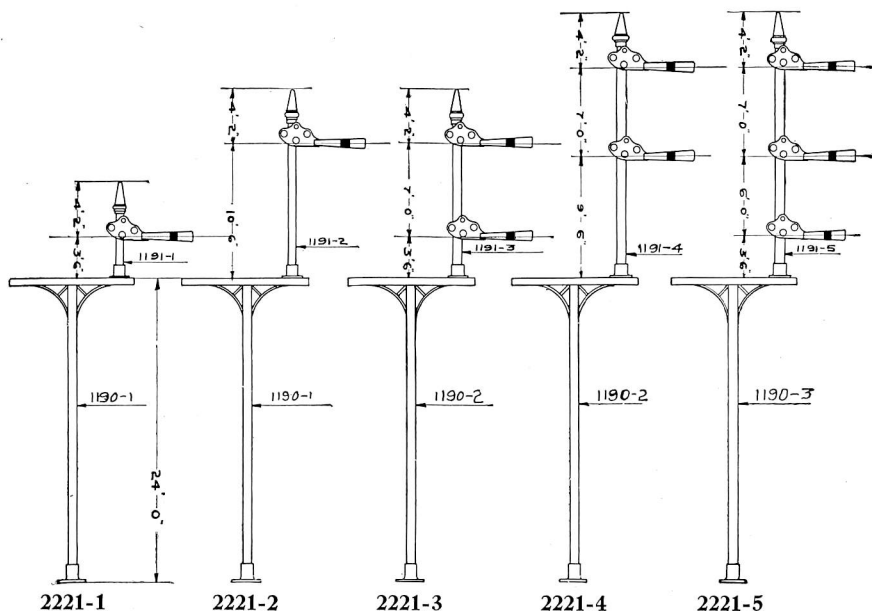
Trade No.	DESCRIPTION	List Price
2222-13	Bracket Post for Two Signals and Connections complete with One No. 1191-1 Low One Arm and One No. 1191-5 Three Arm Bracket Signal.	\$697.50
2222-14	Same as above except with One No. 1191-2 High One Arm and One No. 1191-5 Three Arm Bracket Signal.	715.50
2222-15	Bracket Post for Two Signals and Connections complete with One No. 1191-3 Low Two Arm and One No. 1191-5 Three Arm Bracket Signal.	765.00
2222-16	Same as above except with One No. 1191-4 High Two Arm and One No. 1191-5 Three Arm Bracket Signal.	783.00
2222-17	Bracket Post for Three Signals and Connections complete with One No. 1191-1 Low One Arm Bracket Signal.	508.50
2222-18	Same as above except with One No. 1191-2 High One Arm Bracket Signal.	526.50
2222-19	Bracket Post for Three Signals and Connections complete with One No. 1191-3 Low Two Arm Bracket Signal.	576.00
2222-20	Same as above except with One No. 1191-4 High Two Arm Bracket Signal.	594.00
2222-21	Bracket Post for Three Signals and Connections complete with One No. 1191-5 Three Arm Bracket Signal.	643.50
2222-22	Bracket Post for Three Signals and Connections complete with Two No. 1191-1 Low One Arm Bracket Signal.	607.50
2222-23	Same as above except with Two No. 1191-2 High One Arm Signals.	643.50
2222-24	Bracket Post for Three Signals and Connections complete with Two No. 1191-3 Low Two Arm Bracket Signals.	742.50
2222-25	Same as above except with Two No. 1191-4 High Two Arm Bracket Signals.	778.50
2222-26	Bracket Post for Three Signals and Connections complete with Two No. 1191-5 Three Arm Bracket Signals.	877.50
2222-27	Bracket Post for Three Signals and Connections complete with One No. 1191-1 Low One Arm and One No. 1191-3 Low Two Arm Bracket Signal.	675.00
2222-28	Same as above except with One No. 1191-2 High One Arm and One No. 1191-4 High Two Arm Bracket Signal.	711.00
2222-29	Bracket Post for Three Signals and Connections complete with One No. 1191-1 Low One Arm and One No. 1191-5 Three Arm Bracket Signal.	742.50
2222-30	Same as above except with One No. 1191-2 High One Arm and One No. 1191-5 Three Arm Bracket Signal.	760.50
2222-31	Bracket Post for Three Signals and Connections complete with One No. 1191-3 Low Two Arm and One No. 1191-5 Three Arm Bracket Signal.	810.00
2222-32	Same as above excepting with One No. 1191-4 High Two Arm and One No. 1191-5 Three Arm Bracket Signal.	828.00
1190-10	Bracket Post for Two Signals complete with Connections for One One Arm Signal.	391.50
1190-11	Same as above excepting with Connections for One Two Arm Signal.	405.00
1190-12	Same as above excepting with Connections for One Three Arm Signal.	418.50
1190-13	Same as above excepting with Connections for Two One Arm Signals.	418.50
1190-14	Same as above excepting with Connections for Two Two Arm Signals.	445.50



R. S. A. PIPE OPERATED BRACKET POST SIGNALS

Trade No.	DESCRIPTION	List Price
1190-15	Same as above excepting with Connections for Two Three Arm Signals.	\$472.50
1190-16	Same as above excepting with Connections for One One Arm Signal and One Two Arm Signal.	432.00
1190-17	Same as above excepting with Connections for One One Arm and One Three Arm Signal.	445.50
1190-18	Same as above excepting with Connections for One Two Arm and One Three Arm Signal.	459.00
1190-19	Bracket Post for Three Signals and Connections complete for One One Arm Signal.	436.50
1190-20	Same as above except with Connections for One Two Arm Signal.	450.00
1190-21	Same as above except with Connections for One Three Arm Signal.	463.50
1190-22	Same as above except with Connections for Two One Arm Signals.	463.50
1190-23	Same as above except with Connections for Two Two Arm Signals.	490.50
1190-24	Same as above except with Connections for Two Three Arm Signals.	517.50
1190-25	Same as above except with Connections for One One Arm and One Two Arm Signal.	477.00
1190-26	Same as above except with Connections for One One Arm and One Three Arm Signal.	490.50
1190-27	Same as above except with Connections for One Two Arm and One Three Arm Signal.	504.00
1191-1	R. S. A. Low One Arm Bracket Signal, 90 deg. Upper Quadrant.	72.00
1191-2	R. S. A. High One Arm Bracket Signal, 90 deg. Upper Quadrant.	90.00
1191-3	R. S. A. Low Two Arm Bracket Signal, 90 deg. Upper Quadrant.	126.00
1191-4	R. S. A. High Two Arm Bracket Signal, 90 deg. Upper Quadrant.	144.00
1191-5	R. S. A. Three Arm Bracket Signal, 90 deg. Upper Quadrant.	180.00
2236-1	Low One Arm Bracket Signal, 6½" Roundels, 60 deg. Lower Quadrant.	81.00
2236-2	Low One Arm Bracket Signal, 8¾" Roundels, 60 deg. Lower Quadrant.	82.00
2237-1	High One Arm Bracket Signal, 6½" Roundels, 60 deg. Lower Quadrant.	100.00
2237-2	High One Arm Bracket Signal, 8¾" Roundels, 60 deg. Lower Quadrant.	101.00
2238-1	Low Two Arm Bracket Signal, 6½" Roundels, 60 deg. Lower Quadrant.	126.00
2238-2	Low Two Arm Bracket Signal, 8¾" Roundels, 60 deg. Lower Quadrant.	128.00
2239-1	High Two Arm Bracket Signal, 6½" Roundels, 60 deg. Lower Quadrant.	144.00
2239-2	High Two Arm Bracket Signal, 8¾" Roundels, 60 deg. Lower Quadrant.	146.00
2240-1	Three Arm Bracket Signal, 6½" Roundels, 60 deg. Lower Quadrant.	180.00
2240-2	Three Arm Bracket Signal, 8¾" Roundels, 60 deg. Lower Quadrant.	183.00
2232	Dummy Mast complete with Base, Pinnacle, Spectacle and Lamp Bracket for Vertical Light.	37.80
2232-1	Same as above except for Staggered Light.	37.80

BRACKET POST SIGNALS—PIPE OPERATED



Prices will be furnished upon request for any combination of Signals not shown in the following list.

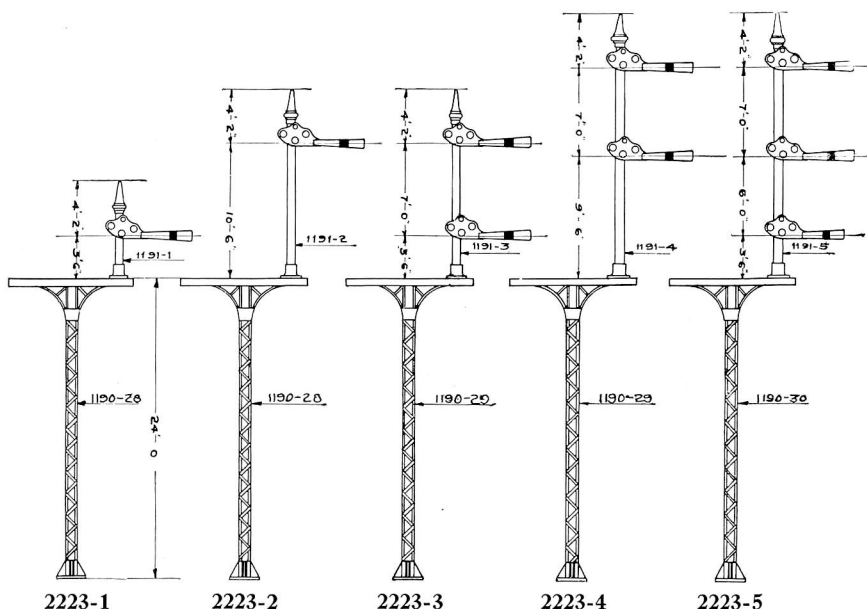
Trade No.	DESCRIPTION	List Price
2221-1	Bracket Post for Two Signals and Connections complete with No. 1191-1 Low One Arm Bracket Signal
2221-2	Same as above except with One No. 1191-2 High One Arm Bracket Signal
2221-3	Bracket Post for Two Signals and Connections complete with One No. 1191-3 Low Two Arm Bracket Signal
2221-4	Same as above excepting with One No. 1191-4 High Two Arm Bracket Signal
2221-5	Bracket Post for Two Signals and Connections complete with One No. 1191-5 Three Arm Signal
2221-6	Bracket Post for Two Signals and Connections complete with Two No. 1191-1 Low One Arm Signals
2221-7	Same as above excepting with Two No. 1191-2 High One Arm Signals
2221-8	Bracket Post for Two Signals and Connections complete with Two No. 1191-3 Low Two Arm Bracket Signals
2221-9	Same as above except with Two No. 1191-4 High Two Arm Bracket Signals
2221-10	Bracket Post for Two Signals and Connections complete with Two No. 1191-5 Three Arm Bracket Signals
2221-11	Bracket Post for Two Signals and Connections complete with One No. 1191-1 Low One Arm and One No. 1191-3 Low Two Arm Bracket Signals
2221-12	Same as above except with One No. 1191-2 High One Arm and One No. 1191-4 High Two Arm Bracket Signal



BRACKET POST SIGNALS—PIPE OPERATED

Trade No.	DESCRIPTION	List Price
2221-13	Bracket Post for Two Signals and Connections complete with One No. 1191-1 Low One Arm and One No. 1191-5 Three Arm Bracket Signals.....
2221-14	Same as above excepting with One No. 1191-2 High One Arm and One No. 1191-5 Three Arm Bracket Signals.....
2221-15	Bracket Post for Two Signals and Connections complete with One No. 1191-3 Low Two Arm and One No. 1191-5 Three Arm Bracket Signals.....
2221-16	Same as above excepting with One No. 1191-4 High Two Arm and One No. 1191-5 Three Arm Bracket Signal.....
1190-1	Bracket Post complete with Connections for One One Arm Signal.....
1190-2	Same as above except with Connections for One Two Arm Signal.....
1190-3	Same as above with Connections for One Three Arm Signal
1190-4	Same as above except with Connections for Two One Arm Signals.....
1190-5	Same as above except with Connections for Two Two Arm Signals.....
1190-6	Same as above with Connections for Two Three Arm Signals
1190-7	Same as above except with Connections for One One Arm and One Two Arm Signal.....
1190-8	Same as above except with Connections for One One Arm and One Three Arm Signal.....
1190-9	Same as above except with Connections for One Two Arm and One Three Arm Signal.....
1191-1	R. S. A. Low One Arm Bracket Signal, 90 deg. Upper Quadrant.....	\$72.00
1191-2	R. S. A. High One Arm Bracket Signal, 90 deg. Upper Quadrant.....	90.00
1191-3	R. S. A. Low Two Arm Bracket Signal, 90 deg. Upper Quadrant.....	126.00
1191-4	R. S. A. High Two Arm Bracket Signal, 90 deg. Upper Quadrant.....	144.00
1191-5	R. S. A. Three Arm Bracket Signal, 90 deg. Upper Quadrant	180.00
2236-1	Low One Arm Bracket Signal, 6½" Roundels, 60 deg. Lower Quadrant.....	81.00
2236-2	Low One Arm Bracket Signal, 8¾" Roundels, 60 deg. Lower Quadrant.....	82.00
2237-1	High One Arm Bracket Signal, 6½" Roundels, 60 deg. Lower Quadrant.....	100.00
2237-2	High One Arm Bracket Signal, 8¾" Roundels, 60 deg. Lower Quadrant.....	101.00
2238-1	Low Two Arm Bracket Signal, 6½" Roundels, 60 deg. Lower Quadrant.....	126.00
2238-2	Low Two Arm Bracket Signal, 8¾" Roundels, 60 deg. Lower Quadrant.....	128.00
2239-1	High Two Arm Bracket Signal, 6½" Roundels, 60 deg. Lower Quadrant.....	144.00
2239-2	High Two Arm Bracket Signal, 8¾" Roundels, 60 deg. Lower Quadrant.....	146.00
2240-1	Three Arm Bracket Signal, 6½" Roundels, 60 deg. Lower Quadrant.....	180.00
2240-2	Three Arm Bracket Signal, 8¾" Roundels, 60 deg. Lower Quadrant.....	183.00
2232	Dummy Mast complete with Base, Pinnacle, Spectacle and Lamp Bracket for Vertical Light.....	37.80
2232-1	Same as above except for Staggered Light.....	37.80

PIPE OPERATED COLUMN BRACKET SIGNALS



Prices will be furnished upon request for any combination of Signals not given in the following list.

Trade No.	DESCRIPTION	List Price
2223-1	Bracket Post for Two Signals and Connections complete with One No. 1191-1 Low One Arm Bracket Signal.
2223-2	Same as above except with One No. 1191-2 High One Arm Bracket Signal.
2223-3	Bracket Post for Two Signals and Connections complete with One No. 1191-3 Low Two Arm Bracket Signal.
2223-4	Same as above excepting with One No. 1191-4 High Two Arm Bracket Signal.
2223-5	Bracket Post for Two Signals and Connections complete with One No. 1191-5 Three Arm Bracket Signal.
2223-6	Bracket Post for Two Signals and Connections complete with Two No. 1191-1 Low One Arm Bracket Signals.
2223-7	Same as above excepting with Two No. 1191-2 High One Arm Bracket Signals.
2223-8	Bracket Post for Two Signals and Connections complete with Two No. 1191-3 Low Two Arm Bracket Signals.
2223-9	Same as above excepting with Two No. 1191-4 High Two Arm Bracket Signals.
2223-10	Bracket Post for Two Signals and Connections complete with Two No. 1191-5 Three Arm Bracket Signals.
2223-11	Bracket Post for Two Signals and Connections complete with One No. 1191-1 Low One Arm and One No. 1191-3 Low Two Arm Bracket Signals.
2223-12	Same as above except with One No. 1191-2 High One Arm and One No. 1191-4 High Two Arm Bracket Signal.



PIPE OPERATED COLUMN BRACKET SIGNALS

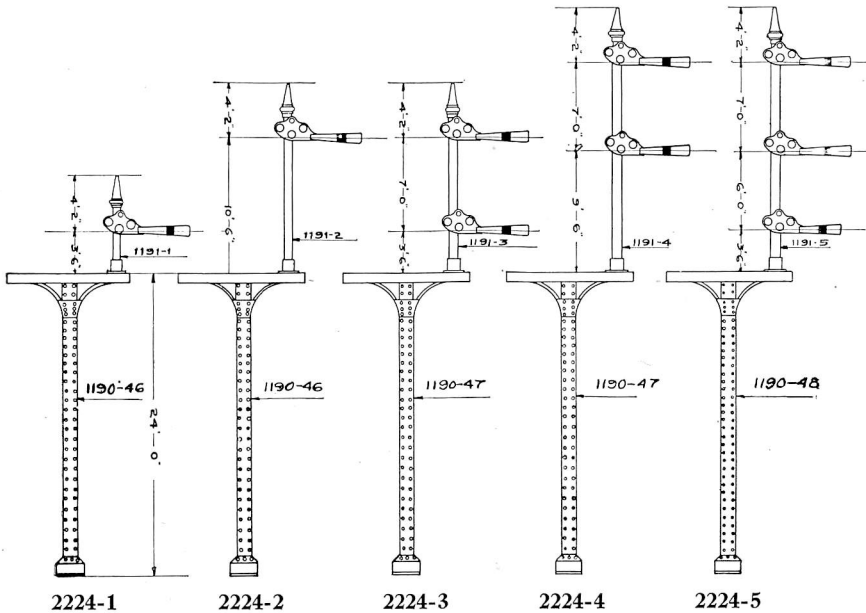
Trade No.	DESCRIPTION	List Price
2223-13	Bracket Post for Two Signals and Connections complete with One No. 1191-1 Low One Arm and One No. 1191-5 Three Arm Bracket Signal.....
2223-14	Same as above except with One No. 1191-2 High One Arm and One No. 1191-5 Three Arm Bracket Signal.....
2223-15	Bracket Post for Two Signals and Connections complete with One No. 1191-3 Low Two Arm and One No. 1191-5 Three Arm Bracket Signal.....
2223-16	Same as above except with One No. 1191-4 High Two Arm and One No. 1191-5 Three Arm Bracket Signal.....
2223-17	Bracket Post for Three Signals and Connections complete for One No. 1191-1 Low One Arm Bracket Signal.....
2223-18	Same as above except with One No. 1191-2 High One Arm Bracket Signal.....
2223-19	Bracket Post for Three Signals and Connections complete for One No. 1191-3 Low Two Arm Bracket Signal.....
2223-20	Same as above except with One No. 1191-4 High Two Arm Bracket Signal.....
2223-21	Bracket Post for Three Signals and Connections complete with One No. 1191-5 Three Arm Bracket Signal.....
2223-22	Bracket Post for Three Signals and Connections complete with Two No. 1191-1 Low One Arm Bracket Signals.....
2223-23	Same as above except with Two No. 1191-2 High One Arm Signals.....
2223-24	Bracket Post for Three Signals and Connections complete with Two No. 1191-3 Low Two Arm Bracket Signals.....
2223-25	Same as above except with Two No. 1191-4 High Two Arm Bracket Signals.....
2223-26	Bracket Post for Three Signals and Connections complete with Two No. 1191-5 Three Arm Bracket Signals.....
2223-27	Bracket Post for Three Signals and Connections complete with One No. 1191-1 Low One Arm and One No. 1191-3 Low Two Arm Bracket Signal.....
2223-28	Same as above except with One No. 1191-2 High One Arm and One No. 1191-4 High Two Arm Bracket Signal.....
2223-29	Bracket Post for Three Signals and Connections complete with One No. 1191-1 Low One Arm and One No. 1191-5 Three Arm Bracket Signal.....
2223-30	Same as above except with One No. 1191-2 High One Arm and One No. 1191-5 Three Arm Bracket Signal.....
2223-31	Bracket Post for Three Signals and Connections complete with One No. 1191-3 Low Two Arm and One No. 1191-5 Three Arm Bracket Signal.....
2223-32	Same as above excepting with One No. 1191-4 High Two Arm and One No. 1191-5 Three Arm Bracket Signal.....
1190-28	Bracket Post for Two Signals complete with Connections for One One Arm Signal.....
1190-29	Same as above excepting with Connections for One Two Arm Signal.....
1190-30	Same as above excepting with Connections for One Three Arm Signal.....
1190-31	Same as above excepting with Connections for Two One Arm Signals.....
1190-32	Same as above excepting with Connections for Two Two Arm Signals.....



PIPE OPERATED COLUMN BRACKET SIGNALS

Trade No.	DESCRIPTION	List Price
1190-33	Same as above excepting with Connections for Two Three Arm Signals	
1190-34	Same as above excepting with Connections for One One Arm Signal and One Two Arm Signal	
1190-35	Same as above excepting with Connections for One One Arm and One Three Arm Signal	
1190-36	Same as above excepting with Connections for One Two Arm and One Three Arm Signal	
1190-37	Bracket Post for Three Signals and Connections complete for One One Arm Signal	
1190-38	Same as above except with Connections for One Two Arm Signal	
1190-39	Same as above except with Connections for One Three Arm Signal	
1190-40	Same as above except with Connections for Two One Arm Signals	
1190-41	Same as above except with Connections for Two Two Arm Signals	
1190-42	Same as above except with Connections for Two Three Arm Signals	
1190-43	Same as above except with Connections for One One Arm and One Two Arm Signal	
1190-44	Same as above except with Connections for One One Arm and One Three Arm Signal	
1190-45	Same as above except with Connections for One Two Arm and One Three Arm Signal	
1191-1	R. S. A. Low One Arm Bracket Signal, 90 deg. Upper Quadrant	\$72.00
1191-2	R. S. A. High One Arm Bracket Signal, 90 deg. Upper Quadrant	90.00
1191-3	R. S. A. Low Two Arm Bracket Signal, 90 deg. Upper Quadrant	126.00
1191-4	R. S. A. High Two Arm Bracket Signal, 90 deg. Upper Quadrant	144.00
1191-5	R. S. A. Three Arm Bracket Signal, 90 deg. Upper Quadrant	180.00
2236-1	Low One Arm Bracket Signal, 6½" Roundels, 60 deg. Lower Quadrant	81.00
2236-2	Low One Arm Bracket Signal, 8¾" Roundels, 60 deg. Lower Quadrant	82.00
2237-1	High One Arm Bracket Signal, 6½" Roundels, 60 deg. Lower Quadrant	100.00
2237-2	High One Arm Bracket Signal, 8¾" Roundels, 60 deg. Lower Quadrant	101.00
2238-1	Low Two Arm Bracket Signal, 6½" Roundels, 60 deg. Lower Quadrant	126.00
2238-2	Low Two Arm Bracket Signal, 8¾" Roundels, 60 deg. Lower Quadrant	128.00
2239-1	High Two Arm Bracket Signal, 6½" Roundels, 60 deg. Lower Quadrant	144.00
2239-2	High Two Arm Bracket Signal, 8¾" Roundels, 60 deg. Lower Quadrant	146.00
2240-1	Three Arm Bracket Signal, 6½" Roundels, 60 deg. Lower Quadrant	180.00
2240-2	Three Arm Bracket Signal, 8¾" Roundels, 60 deg. Lower Quadrant	183.00
2232	Dummy Mast complete with Base, Pinnacle, Spectacle and Lamp Bracket for Vertical Light	37.80
2232-1	Same as above except for Staggered Light	37.80

R. S. A. PIPE OPERATED COLUMN BRACKET SIGNALS



Prices will be furnished upon request for any combination of Signals not given in the following list.

Trade No.	DESCRIPTION	List Price
2224-1	Bracket Post for Two Signals and Connections complete with One No. 1191-1 Low One Arm Bracket Signal.....
2224-2	Same as above except with One No. 1191-2 High One Arm Bracket Signal.....
2224-3	Bracket Post for Two Signals and Connections complete with One No. 1191-3 Low Two Arm Bracket Signal.....
2224-4	Same as above excepting with One No. 1191-4 High Two Arm Bracket Signal.....
2224-5	Bracket Post for Two Signals and Connections complete with One No. 1191-5 Three Arm Bracket Signal.....
2224-6	Bracket Post for Two Signals and Connections complete with Two No. 1191-1 Low One Arm Bracket Signals.....
2224-7	Same as above excepting with Two No. 1191-2 High One Arm Bracket Signals.....
2224-8	Bracket Post for Two Signals and Connections complete with Two No. 1191-3 Low Two Arm Bracket Signals.....
2224-9	Same as above excepting with Two No. 1191-4 High Two Arm Bracket Signals.....
2224-10	Bracket Post for Two Signals and Connections complete with Two No. 1191-5 Three Arm Bracket Signals.....
2224-11	Bracket Post for Two Signals and Connections complete with One No. 1191-1 Low One Arm and One No. 1191-3 Low Two Arm Bracket Signals.....
2224-12	Same as above except with One No. 1191-2 High One Arm and One No. 1191-4 High Two Arm Bracket Signals.....



R. S. A. PIPE OPERATED COLUMN BRACKET SIGNALS

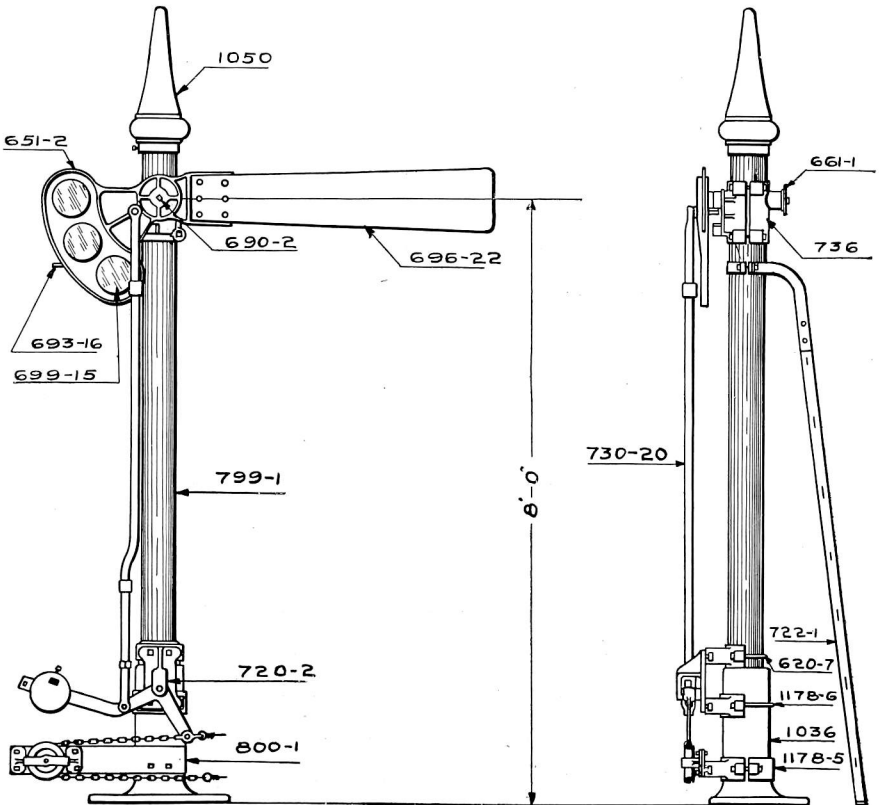
Trade No.	DESCRIPTION	List Price
2224-13	Bracket Post for Two Signals and Connections complete with One No. 1191-1 Low One Arm and One No. 1191-5 Three Arm Bracket Signal.....
2224-14	Same as above except with One No. 1191-2 High One Arm and One No. 1191-5 Three Arm Bracket Signal.....
2224-15	Bracket Post for Two Signals and Connections complete with One No. 1191-3 Low Two Arm and One No. 1191-5 Three Arm Bracket Signal.....
2224-16	Same as above except with One No. 1191-4 High Two Arm and One No. 1191-5 Three Arm Bracket Signal.....
2224-17	Bracket Post for Three Signals and Connections complete for One No. 1191-1 Low One Arm Bracket Signal.....
2224-18	Same as above except with One No. 1191-2 High One Arm Bracket Signal.....
2224-19	Bracket Post for Three Signals and Connections complete for One No. 1191-3 Low Two Arm Bracket Signal.....
2224-20	Same as above except with One No. 1191-4 High Two Arm Bracket Signal.....
2224-21	Bracket Post for Three Signals and Connections complete with One No. 1191-5 Three Arm Bracket Signal.....
2224-22	Bracket Post for Three Signals and Connections complete with Two No. 1191-1 Low One Arm Bracket Signals.....
2224-23	Same as above except with Two No. 1191-2 High One Arm Signals.....
2224-24	Bracket Post for Three Signals and Connections complete with Two No. 1191-3 Low Two Arm Bracket Signals.....
2224-25	Same as above except with Two No. 1191-4 High Two Arm Bracket Signals.....
2224-26	Bracket Post for Three Signals and Connections complete with Two No. 1191-5 Three Arm Bracket Signals.....
2224-27	Bracket Post for Three Signals and Connections complete with One No. 1191-1 Low One Arm and One No. 1191-2 Low Two Arm Bracket Signal.....
2224-28	Same as above except with One No. 1191-2 High One Arm and One No. 1191-4 High Two Arm Bracket Signal.....
2224-29	Bracket Post for Three Signals and Connections complete with One No. 1191-1 Low One Arm and One No. 1191-5 Three Arm Bracket Signal.....
2224-30	Same as above except with One No. 1191-2 High One Arm and One No. 1191-5 Three Arm Bracket Signal.....
2224-31	Bracket Post for Three Signals and Connections complete with One No. 1191-3 Low Two Arm and One No. 1191-5 Three Arm Bracket Signal.....
2224-32	Same as above excepting with One No. 1191-4 High Two Arm and One No. 1191-5 Three Arm Bracket Signal.....
1190-46	Bracket Post for Two Signals complete with Connections for One One Arm Signal.....
1190-47	Same as above excepting with Connections for One Two Arm Signal.....
1190-48	Same as above excepting with Connections for One Three Arm Signal.....
1190-49	Same as above excepting with Connections for Two One Arm Signals.....
1190-50	Same as above excepting with Connections for Two Two Arm Signals.....



R. S. A. PIPE OPERATED COLUMN BRACKET SIGNALS

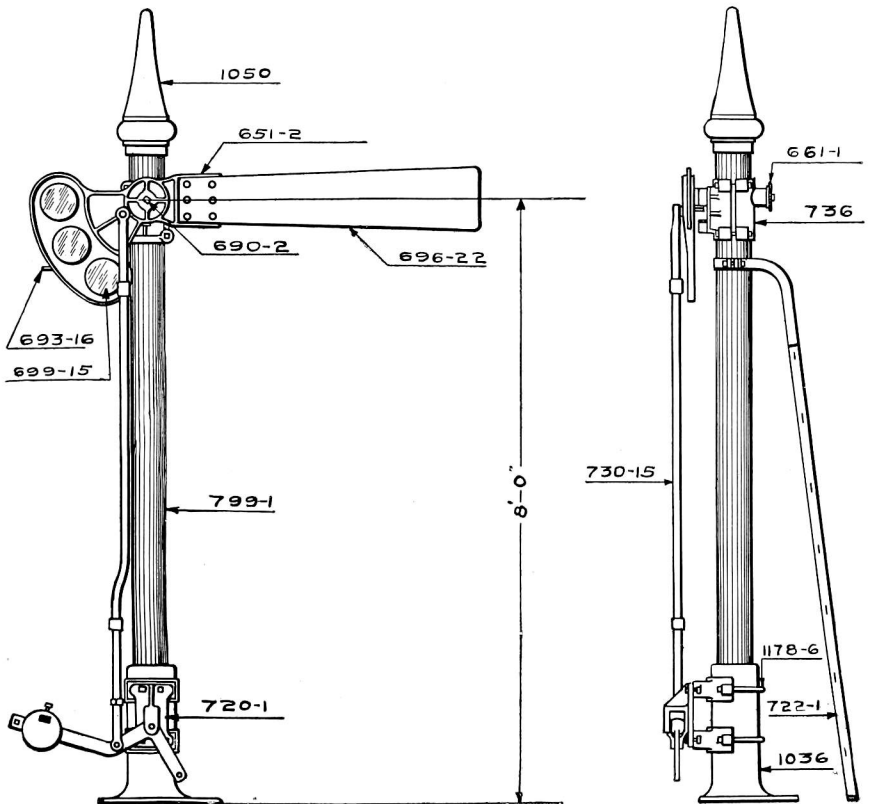
Trade No.	DESCRIPTION	List Price
1190-51	Same as above excepting with Connections for Two Three Arm Signals.
1190-52	Same as above excepting with Connections for One One Arm Signal and One Two Arm Signal.
1190-53	Same as above excepting with Connections for One One Arm and One Three Arm Signal.
1190-54	Same as above excepting with Connections for One Two Arm and One Three Arm Signal.
1190-55	Bracket Post for Three Signals and Connections complete for One One Arm Signal.
1190-56	Same as above except with Connections for One Two Arm Signal.
1190-57	Same as above except with Connections for One Three Arm Signal.
1190-58	Same as above except with Connections for Two One Arm Signals.
1190-59	Same as above except with Connections for Two Two Arm Signals.
1190-60	Same as above except with Connections for Two Three Arm Signals.
1190-61	Same as above except with Connections for One One Arm and One Two Arm Signal.
1190-62	Same as above except with Connections for One One Arm and One Three Arm Signal.
1190-63	Same as above except with Connections for One Two Arm and One Three Arm Signal.
1191-1	R. S. A. Low One Arm Signal, 90 deg. Upper Quadrant.	\$72.00
1191-2	R. S. A. High One Arm Bracket Signal, 90 deg. Upper Quadrant.	90.00
1191-3	R. S. A. Low Two Arm Bracket Signal, 90 deg. Upper Quadrant.	126.00
1191-4	R. S. A. High Two Arm Bracket Signal, 90 deg. Upper Quadrant.	144.00
1191-5	R. S. A. Three Arm Bracket Signal, 90 deg. Upper Quadrant.	180.00
2236-1	Low One Arm Bracket Signal, 6½" Roundels, 60 deg. Lower Quadrant.	81.00
2236-2	Low One Arm Bracket Signal, 8⅜" Roundels, 60 deg. Lower Quadrant.	82.00
2237-1	High One Arm Bracket Signal, 6½" Roundels, 60 deg. Lower Quadrant.	100.00
2237-2	High One Arm Bracket Signal, 8⅜" Roundels, 60 deg. Lower Quadrant.	101.00
2238-1	Low Two Arm Bracket Signal, 6½" Roundels, 60 deg. Lower Quadrant.	126.00
2238-2	Low Two Arm Bracket Signal, 8⅜" Roundels, 60 deg. Lower Quadrant.	128.00
2239-1	High Two Arm Bracket Signal, 6½" Roundels, 60 deg. Lower Quadrant.	144.00
2239-2	High Two Arm Bracket Signal, 8⅜" Roundels, 60 deg. Lower Quadrant.	146.00
2240-1	Three Arm Bracket Signal, 6½" Roundels, 60 deg. Lower Quadrant.	180.00
2240-2	Three Arm Bracket Signal, 8⅜" Roundels, 60 deg. Lower Quadrant.	183.00
2232	Dummy Mast complete with Base, Pinnacle, Spectacle and Lamp Bracket for Vertical Light.	37.80
2232-1	Same as above except for Staggered Light.	37.80

LOW ONE ARM 60 DEG. LOWER QUADRANT WIRE
OPERATED BRIDGE OR BRACKET SIGNAL



2241-1

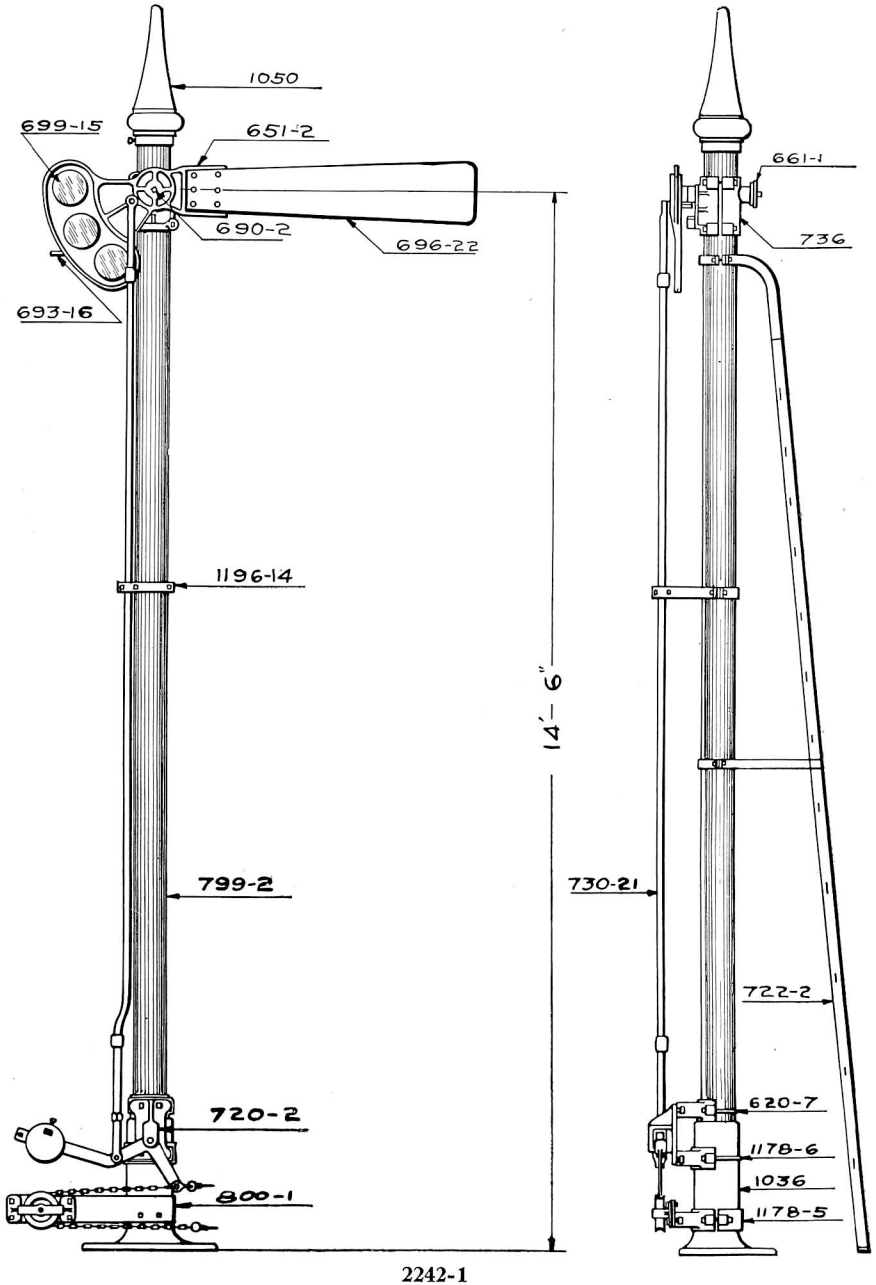
LOW ONE ARM 60 DEG. LOWER QUADRANT PIPE
OPERATED BRIDGE OR BRACKET SIGNAL



2236-1

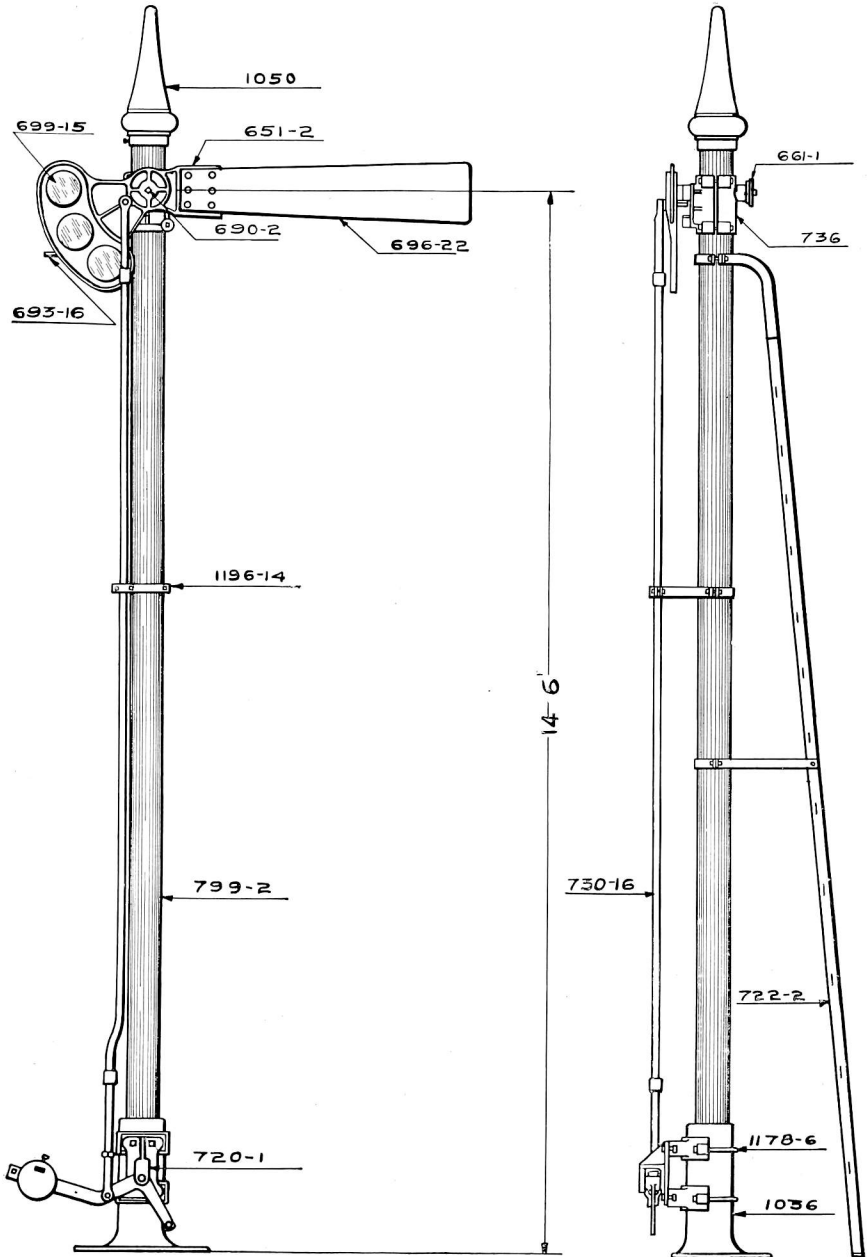


HIGH ONE ARM 60 DEG. LOWER QUADRANT WIRE OPERATED BRIDGE OR BRACKET SIGNAL



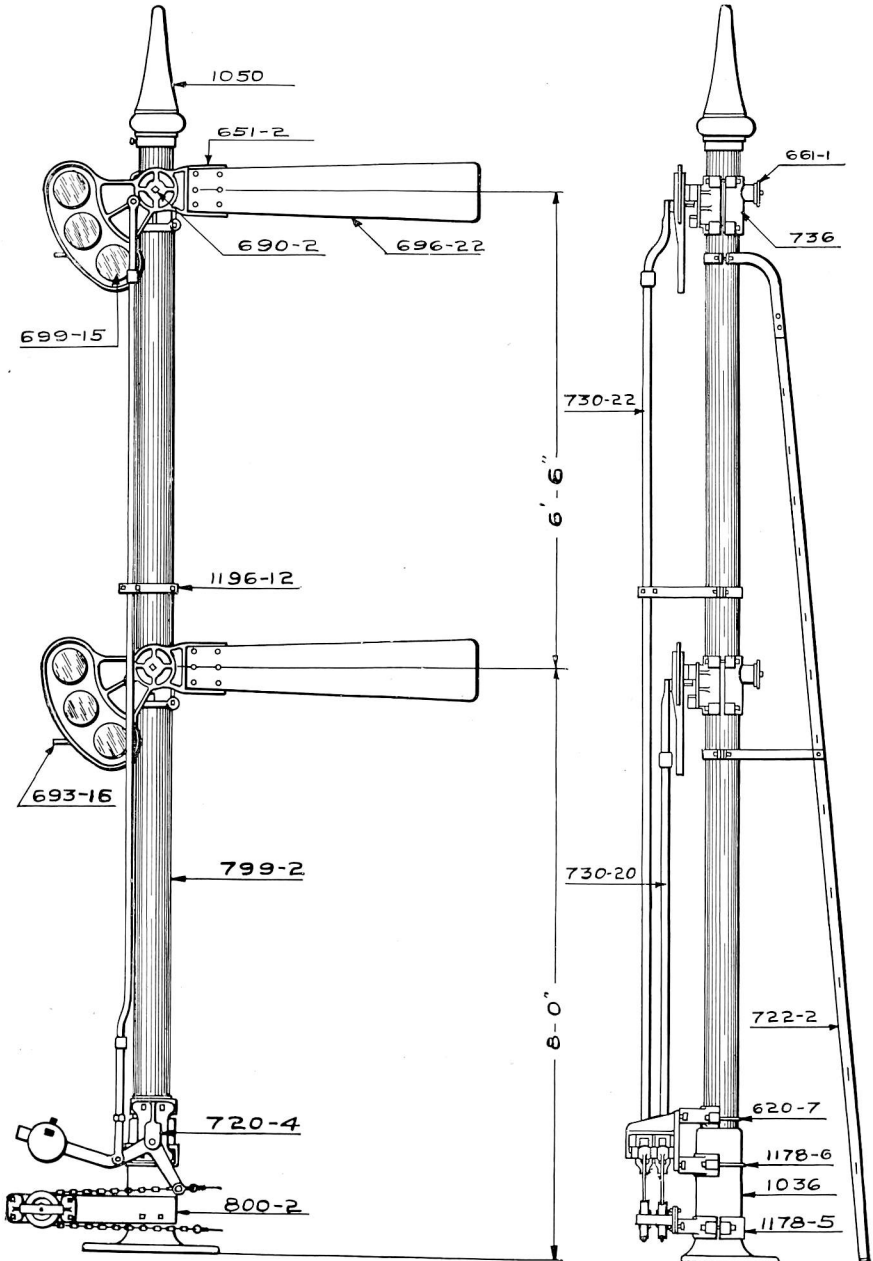


HIGH ONE ARM 60 DEG. LOWER QUADRANT PIPE OPERATED BRIDGE OR BRACKET SIGNAL



2237-1

LOW TWO ARM 60 DEG. LOWER QUADRANT WIRE OPERATED BRIDGE OR BRACKET SIGNAL



2243-1 and 2243-3



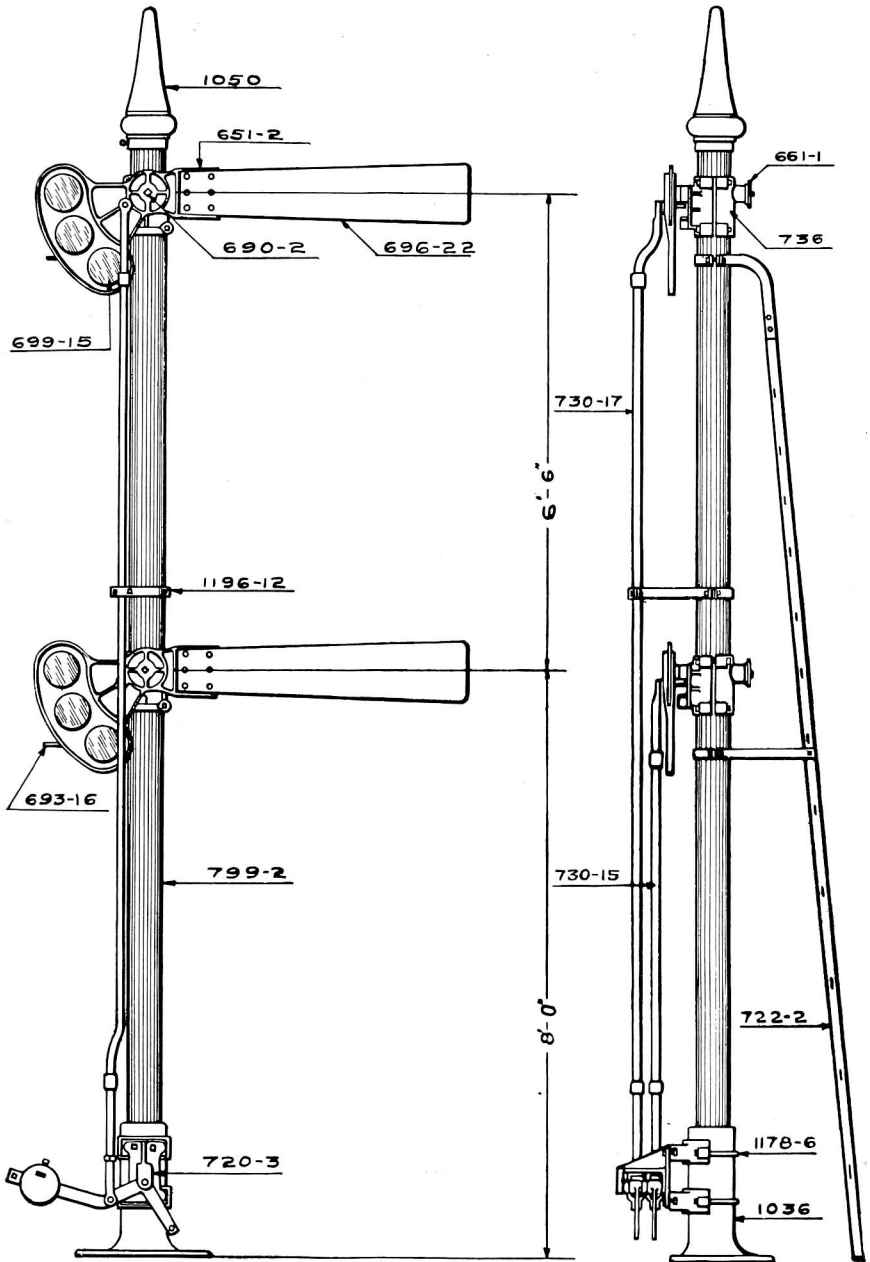
LOW TWO ARM 60 DEG. LOWER QUADRANT WIRE OPERATED BRIDGE OR BRACKET SIGNAL

Lamps, Chain, Wire, Wire Eyes, Shackles and Split Links are not included in list price, but Signals are furnished complete with Roundels and Fittings as shown. When Signals are ordered with a Fixed Arm, orders should specify whether Arm is to be fixed in the 0 deg. or in the 30 deg. position. When Signals are ordered with Arms which are limited in travel, orders should specify whether they are limited from 0 deg. to 30 deg. or from 30 deg. to 60 deg. Prices for Limited Travel Arms are same as for Operative Arms. Signals can be furnished with any style Wood Semaphore Blade at the same price. Orders should specify Blade required, also color and number of Roundels required.

Trade No.	DESCRIPTION	List Price
2243-1	Low Two Arm 60 deg. Lower Quadrant Wire Operated Bridge or Bracket Signal, Two Arms Operative, complete as shown, 6½" Roundels	\$133.20
2243-3	Same as above except with One Arm Fixed and One Arm Operative	126.90
2243-2	Low Two Arm 60 deg. Lower Quadrant Wire Operated Bridge or Bracket Signal, Two Arms Operative, 8¾" Roundels	135.20
2243-4	Same as above except with One Arm Operative and One Arm Fixed	128.90
799-2	Mast Only	36.00
799-22	Same as above with 1036 Base	57.60
1036	Base	16.20
1050	Pinnacle	2.70
736	Semaphore Bearing with Front and Rear Half and Bolts for fastening to Mast	4.41
690-2	Semaphore Shaft complete with Nuts, Washers and Cotters	2.70
651-2	" Spectacle complete with Operating Stud and Roundel Rings and Bolts for 6½" Roundels	7.74
652-2	Same as above except for 8¾" Roundels	8.46
661-1	Back Spectacle complete with Roundel Ring and Bolts, (takes 3" Roundels), used with 651-2 Spectacle	1.26
661-2	Back Spectacle complete with Roundel Ring and Bolts, (takes 3" Roundels), used with 652-2 Spectacle	1.26
699-5	Glass Roundels, 3" dia. Specify Color	
699-15	" " 6½" " " " "	
699-19	" " 8¾" " " " "	
696-22	Semaphore Blade complete with six Bolts	2.46
693-16	Lamp Bracket and Support complete with Bolts for fastening, for use with 651-2 Semaphore Spectacle	3.60
693-17	Same as above except for 652-2 Semaphore Spectacle	3.60
730-20	Operating Rod for Lower Signal complete with Screw Jaw and Eye Rod	4.50
730-22	Operating Rod for Upper Signal complete with Screw Jaw and Eye Rod	5.40
1196-12	Pipe Guide, One Way, complete with Bolts for fastening to Mast	1.49
720-4	Two Way Balance Lever Stand complete with Pin, Cotter, Lever, 10 lb. Counterweight, Bolts and Separators	12.32
1178-6	Clamp for Lower Part of Balance Lever Stand complete with U Bolt and Bolts for fastening Stand	2.95
620-7	Same as above except for Upper Part of Balance Lever	2.34
1178-5	Clamp for Signal Wheel complete with Back Half and One Bolt and Bolts for fastening Signal Wheel	2.95
800-2	Two Way Signal Wheel complete with Support Brace and Bolt	4.44
722-2	Ladder complete with Top Pieces, Clamps, Stays and Bolts for fastening	13.95
703-46	Double Shackle complete with Pin and Cotter	.20
703-1	Wire Eyes	.04
703-11	Split Link, per C.	3.60
703-16	¼" Proof Chain, per ft.	.14



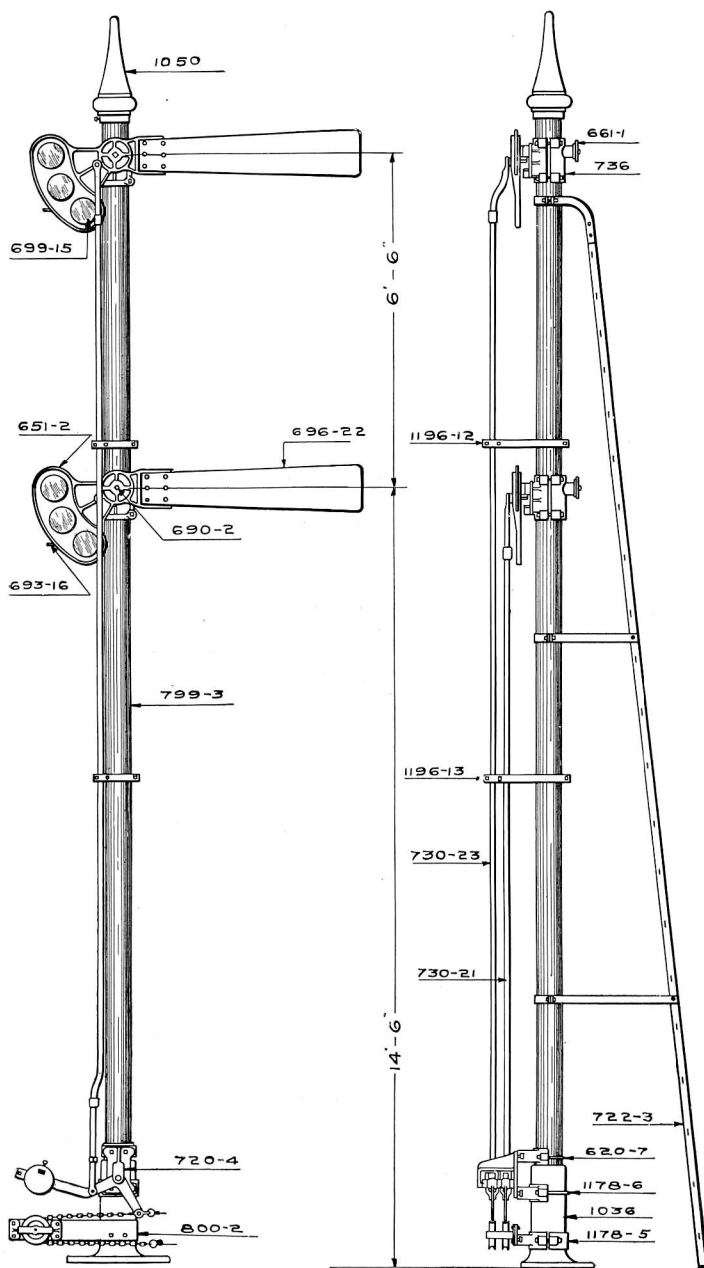
LOW TWO ARM 60 DEG. LOWER QUADRANT PIPE OPERATED BRIDGE OR BRACKET SIGNAL



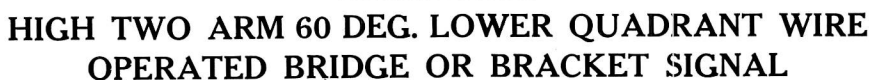
2238-1 and 2238-3



HIGH TWO ARM 60 DEG. LOWER QUADRANT WIRE OPERATED BRIDGE OR BRACKET SIGNAL



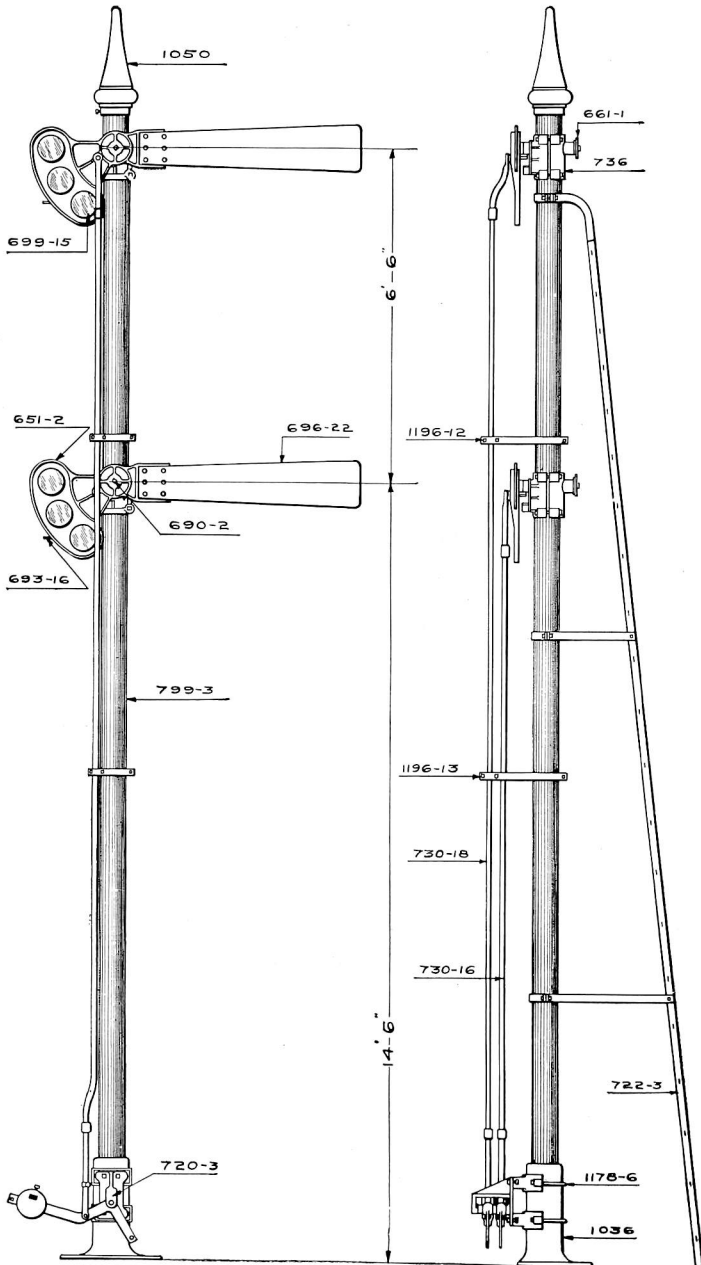
2244-1 and 2244-3



Trade No.	DESCRIPTION	List Price
2244-1	High Two Arm 60 deg. Lower Quadrant Wire Operated Bridge or Bracket Signal with Two Arms Operative, complete as shown, 6½" Roundels.	\$155.20
2244-3	Same as above except with One Arm Operative and One Arm Fixed.	148.90
2244-2	High Two Arm 60 deg. Lower Quadrant Wire Operated Bridge or Bracket Signal with Two Arms Operative, 8⅜" Roundels	157.20
2244-4	Same as above except with One Arm Operative and One Arm Fixed.	150.90
799-3	Mast Only.	50.40
799-33	Same as above with Base 1036.	72.00
1036	Base.	16.20
1050	Pinnacle with Set Screw.	2.70
736	Semaphore Bearing with Front and Rear Half and Bolts for fastening to Mast.	4.41
690-2	Semaphore Shaft complete with Nuts, Washers and Cotters	2.70
651-2	" Spectacle complete with Operating Stud, Roundel Rings and Bolts for 6½" Roundels.	7.74
652-2	Same as above, excepting for 8⅜" Roundels.	8.46
661-1	Back Spectacle complete with Roundel Ring and Bolts, (takes 3" Roundels), used with 651-2 Spectacle.	1.26
661-2	Back Spectacle complete with Roundel Ring and Bolts, (takes 3" Roundels), used with 652-2 Spectacle.	1.26
699-5	Glass Roundels, 3" dia. Specify Color.	
699-15	" " 6½" " " " "	
699-19	" " 8⅜" " " " "	
696-22	Semaphore Blade complete with six Bolts.	2.46
693-16	Lamp Bracket and Support complete with Bolts for fastening, for use with 651-2 Semaphore Spectacle.	3.60
693-17	Same as above except for 652-2 Semaphore Spectacle.	3.60
730-21	Operating Rod for Lower Signal complete with Screw Jaw and Eye Rod.	4.95
730-23	Operating Rod for Upper Signal complete with Screw Jaw and Eye Rod.	5.85
1196-12	Pipe Guide, One Way, complete with Bolts for fastening to Mast.	1.49
1196-13	Same as above except Two Way.	1.76
720-4	Two Way Balance Lever Stand complete with Pin, Cotter, Lever, 10 lb. Counterweight, Bolts and Separators.	12.32
1178-6	Clamp for Lower Part of Balance Lever Stand complete with U Bolt and Bolts for fastening Stand.	2.95
620-7	Same as above except for Upper Part of Balance Lever.	2.34
1178-5	Clamp for Signal Wheel complete with Back Half and One Bolt and Bolts for fastening Signal Wheel.	2.95
800-2	Two Way Signal Wheel complete with Support Brace and Bolts.	4.44
722-3	Ladder complete with Top Pieces, Clamps, Stays and Bolts for fastening.	18.90
703-46	Double Shackle complete with Pin and Cotters.20
703-11	Split Links, per C.	3.60
703-16	¼" Proof Chain, per ft.14
703-1	Wire Eyes.04



HIGH TWO ARM 60 DEG. LOWER QUADRANT PIPE OPERATED BRIDGE OR BRACKET SIGNAL

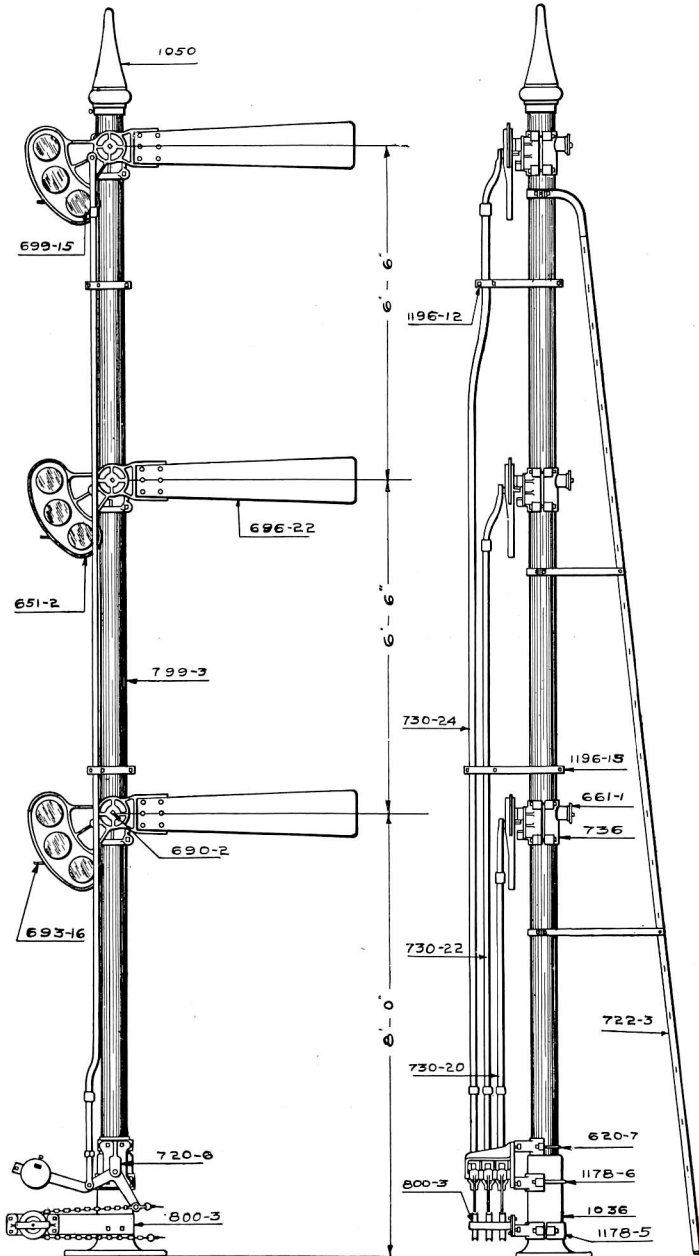


2239-1 and 2239-3

HIGH TWO ARM 60 DEG. LOWER QUADRANT PIPE OPERATED BRIDGE OR BRACKET SIGNAL



THREE ARM 60 DEG. LOWER QUADRANT WIRE OPERATED BRIDGE OR BRACKET SIGNAL



2245-1 and 2245-3

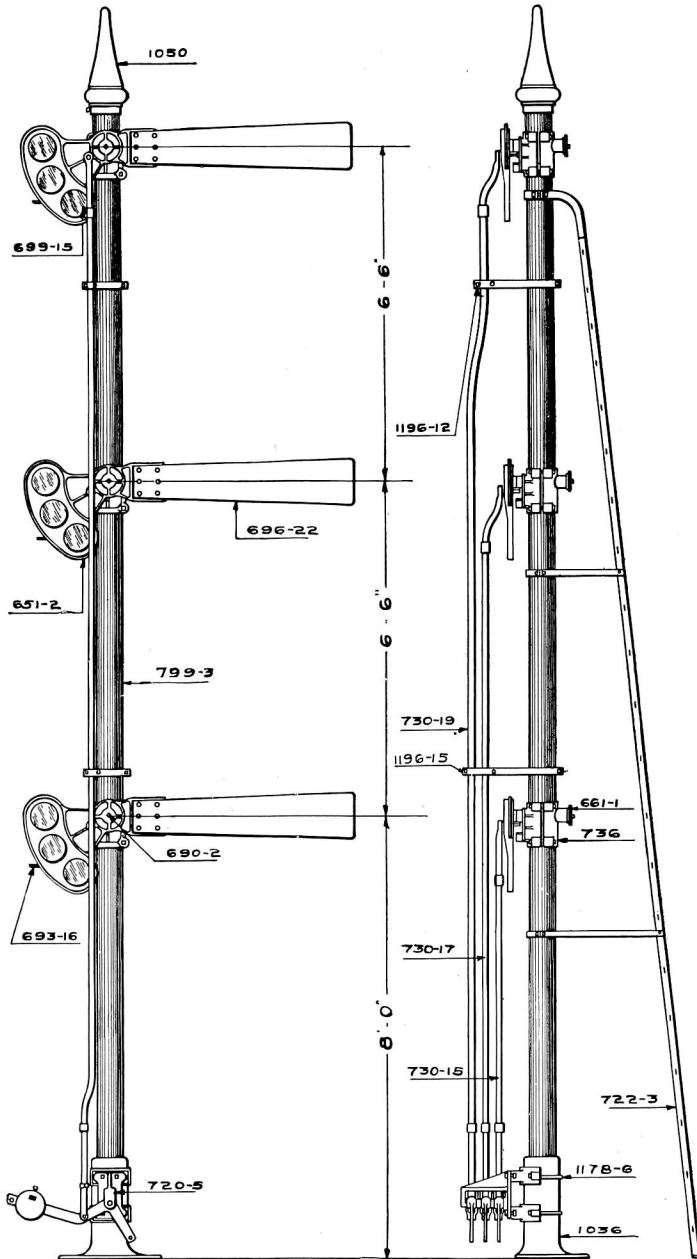


THREE ARM 60 DEG. LOWER QUADRANT WIRE OPERATED BRIDGE OR BRACKET SIGNAL

Lamps, Chain, Wire, Wire Eyes, Shackles and Split Links are not included in list price, but Signals are furnished complete with Roundels and Fittings as shown. When Signals are ordered with a Fixed Arm, orders should specify whether Arm is to be fixed in the 0 deg. or in the 30 deg. position. When Signals are ordered with Arms which are limited in travel, orders should specify whether they are limited from 0 deg. to 30 deg. or from 30 deg. to 60 deg. Prices for Limited Travel Arms are same as for Operative Arms. Signals can be furnished with any style Wood Semaphore Blade at same price. Orders should specify Blade required, also color and number of Roundels required.

Trade No.	DESCRIPTION	List Price
2245-1	Three Arm 60 deg. Lower Quadrant Wire Operated Bridge or Bracket Signal with Three Arms Operative, complete as shown, $6\frac{1}{2}$ " Roundels.....	\$188.40
2245-3	Same as above except with Two Arms Operative and One Arm Fixed.....	182.10
2245-2	Three Arm 60 deg. Lower Quadrant Wire Operated Bridge and Bracket Signal with Three Arms Operative, $8\frac{3}{8}$ " Roundels.....	191.40
2245-4	Same as above except with Two Arms Operative and One Arm Fixed.....	185.10
799-3	Mast Only.....	50.40
799-33	Same as above with Base 1036.....	72.00
1036	Base.....	16.20
1050	Pinnacle with Set Screw.....	2.70
736	Semaphore Bearing with Front Half, Rear Half and Bolts for fastening to Mast.....	4.41
690-2	Semaphore Shaft complete with Nuts, Washers and Cotters..	2.70
651-2	" Spectacle complete with Operating Stud, Roundel Rings and Bolts for $6\frac{1}{2}$ " Roundels.....	7.74
652-2	Same as above, excepting for $8\frac{3}{8}$ " Roundels.....	8.46
661-1	Back Spectacle complete with Roundel Ring and Bolts, takes 3" Roundels and used with 651-2 Spectacle.....	1.26
661-2	Back Spectacle complete with Roundel Ring and Bolts, takes 3" Roundels, used with 652-2 Spectacles.....	1.26
699-5	Glass Roundels, 3" dia. Specify Color.....
699-15	" " $6\frac{1}{2}$ " " " " ".....
699-19	" " $8\frac{3}{8}$ " " " " ".....
696-22	Semaphore Blade complete with six Bolts.....	2.46
693-16	Lamp Bracket and Support complete with Bolts for fastening, for use with 651-2 Semaphore Spectacle.....	3.60
693-17	Same as above except for 652-2 Semaphore Spectacle.....	3.60
730-20	Operating Rod for Lower Signal complete with Screw Jaw and Eye Rod.....	4.50
730-22	Operating Rod for Middle Signal complete with Screw Jaw and Eye Rod.....	5.40
730-24	Operating Rod for Upper Signal complete with Screw Jaw and Eye Rod.....	6.30
1196-12	Pipe Guide, One Way, complete with Bolts for fastening to Mast	1.49
1196-15	Same as above except Two Way.....	1.76
720-6	Three Way Balance Lever Stand complete with Pin, Cotter, Levers, 10 lb. Counterweight, Bolts and Separators.....	17.36
1178-6	Clamp for Lower Part of Balance Lever Stand, complete with U Bolt and Bolts for fastening Stand.....	2.95
620-7	Same as above except for Upper Part of Balance Lever.....	2.34
1178-5	Clamp for Signal Wheel complete with Back Half and One Bolt and Bolts for fastening Signal Wheel.....	2.95
800-3	Three Way Signal Wheel complete with Support Brace and Bolts	4.88
722-3	Ladder complete with Top Pieces, Clamps, Stays and Bolts..	18.90
703-46	Double Shackle complete with Pin and Cotter.....	.20
703-1	Wire Eyes.....	.04
703-11	Split Links, per C.....	3.60
703-16	$\frac{3}{4}$ " Proof Chain, per ft.....	.14

THREE ARM 60 DEG. LOWER QUADRANT PIPE OPERATED BRIDGE OR BRACKET SIGNAL



2240-1 and 2240-3

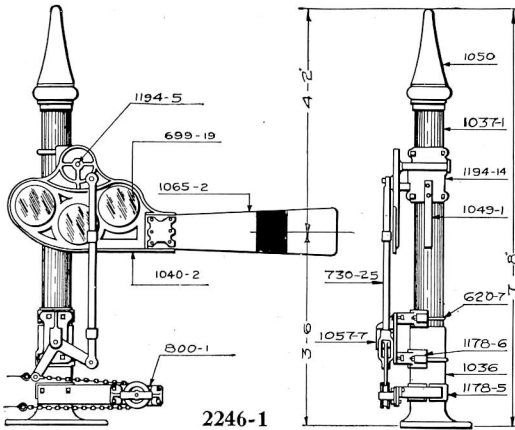


THREE ARM 60 DEG. LOWER QUADRANT PIPE OPERATED BRIDGE OR BRACKET SIGNAL

Lamps are not included in list prices, but Signals are furnished complete with Roundels. When Signals are ordered with Fixed Arm, orders should specify whether Arm is to be fixed in the 0 deg. or in the 30 deg. position. When Signals are ordered with Arms which are limited in travel, orders should specify whether they are limited from 0 deg. to 30 deg. or from 30 deg. to 60 deg. Prices for Limited Travel Arms are same as for Operative Arms. Signals can be furnished with any style Wood Semaphore Blade at same list prices. Orders should specify Blades required, also color and number of Roundels.

Trade No.	DESCRIPTION	List Price
2240-1	Three Arm 60 deg. Lower Quadrant Pipe Operated Bridge or Bracket Signal with Three Arms Operative, complete as shown, 6½" Roundels.....	\$180.00
2240-3	Same as above except with Two Arms Operative and One Arm Fixed.....	173.70
2240-2	Three Arm 60 deg. Lower Quadrant Pipe Operated Bridge or Bracket Signal with Three Arms Operative, complete as shown, 8¾" Roundels.....	183.00
2240-4	Same as above except with Two Arms Operative and One Arm Fixed.....	176.70
799-3	Mast Only.....	50.40
799-33	Same as above with Base 1036.....	72.00
1036	Base.....	16.20
1050	Pinnacle with Set Screw.....	2.70
736	Semaphore Bearing with Front Half, Rear Half and Bolts for fastening to Mast.....	4.41
690-2	Semaphore Shaft complete with Nuts, Washers and Cotters	2.70
651-2	" Spectacle complete with Operating Stud, Roundel Rings and Bolts for 6½" Roundels.....	7.74
652-2	Same as above, excepting for 8¾" Roundels.....	8.46
661-1	Back Spectacle complete with Roundel Ring and Bolts, (takes 3" Roundels), used with 651-2 Spectacles.....	1.26
661-2	Back Spectacle complete with Roundel Ring and Bolts, (takes 3" Roundels), used with 652-2 Spectacles.....	1.26
699-5	Glass Roundels, 3" dia. Specify Color.....
699-15	" " 6½" " " " ".....
699-19	" " 8¾" " " " ".....
696-22	Semaphore Blade complete with six Bolts.....	2.46
693-16	Lamp Bracket and Support complete with Bolts for fastening, for use with 651-2 Semaphore Spectacle.....	3.60
693-17	Same as above except for 652-2 Semaphore Spectacle.....	3.60
730-15	Operating Rod for Lower Signal complete with Screw Jaw and Eye Rod.....	4.50
730-17	Operating Rod for Middle Signal complete with Screw Jaw and Eye Rod.....	5.40
730-19	Operating Rod for Upper Signal complete with Screw Jaw and Eye Rod.....	6.30
1196-12	Pipe Guide, One Way, complete with Bolts for fastening to Mast.....	1.49
1196-15	Same as above except Two Way.....	1.76
720-5	Three Way Balance Lever Stand complete with Pin, Cotter, Levers, 40 lb. Counterweight, Bolts and Separator.....	26.27
1178-6	Clamp for Balance Lever Stand complete with U Bolts and Bolts for fastening Stand.....	2.95
722-3	Ladder complete with Top Pieces, Clamps, Stays and Bolts for fastening.....	18.90

LOW ONE ARM 90 DEG. UPPER QUADRANT WIRE OPERATED BRIDGE OR BRACKET SIGNAL

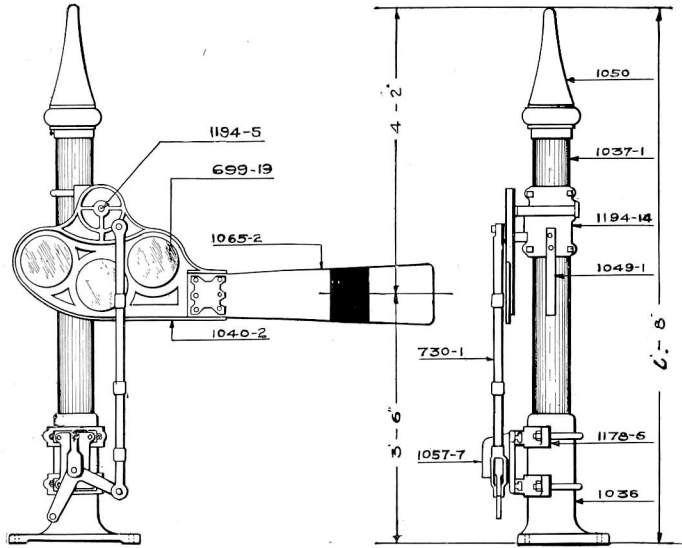


Lamps, Chain, Wire, Wire Eyes, Shackles and Split Links are not included in list prices, but Signals are furnished complete with Roundels and Fittings as shown. Signals can be furnished with any desired style Wood Semaphore Blade at same prices. Orders should specify Blade required, also color and number of Roundels.

Trade No.	DESCRIPTION	List Price
2246-1	Low One Arm 90 deg. Upper Quadrant Wire Operated Bridge and Bracket Signal, complete as shown	\$78.30
2246-2	Same as above except with R. S. A. 1041 Design "B" Spectacle	78.30
1037-1	Mast Only	7.20
1037-11	Mast with Base	28.80
1036	Base	16.20
1050	Pinnacle with Set Screw	2.70
1194-14	Semaphore Bearing complete with Spring Stop and U Bolt for 1040 Spectacle	9.00
1194-15	Semaphore Bearing complete with Spring Stop, Clamp and U Bolt for 1041 Spectacle	10.00
1194-5	Shaft complete with Washer, Cotter and Pin	2.25
1040-2	Semaphore Spectacle complete with Operating Stud, Roundel Rings and Bolts, Design "A"	17.10
1041-2	Semaphore Spectacle, complete with Operating Stud, Roundel Rings and Bolts, Design "B"	16.20
699-19	Glass Roundels, 8 $\frac{3}{8}$ " dia. Specify Color	2.70
1065-2	Semaphore Blade complete with Blade Plate and Bolts	3.60
1049-1	Lamp Bracket and Support complete with Nuts and Bolts for R. S. A. 1040 Spectacle	4.50
1049-2	Lamp Bracket and Support complete with Nuts and Bolts for R. S. A. 1041 Spectacle	3.60
730-25	Operating Rod complete with Screw Jaw and Eye Rod	3.60
1057-7	One Way Crank Stand complete with Pin, Cotter and One 9" x 9" Crank	3.60
1178-5	Clamp for Signal Wheel complete with Back Half and Bolts for fastening Stand	2.95
1178-6	Clamp for Crank Stand complete with U Bolt and Bolts for fastening Stand	2.95
620-7	Clamp for Crank Stand complete with U Bolt and Bolts for fastening Stand	2.34
800-1	One Way Signal Wheel complete with Support, Brace and Bolts	3.93
703-46	Double Shackle complete with Pin and Cotter20
703-1	Wire Eyes04
703-11	Split Links, per C.	3.60
703-16	$\frac{1}{4}$ " Proof Chain, per ft.14

R. S. A. ONE ARM 90 DEG. UPPER QUADRANT PIPE OPERATED BRIDGE OR BRACKET SIGNAL

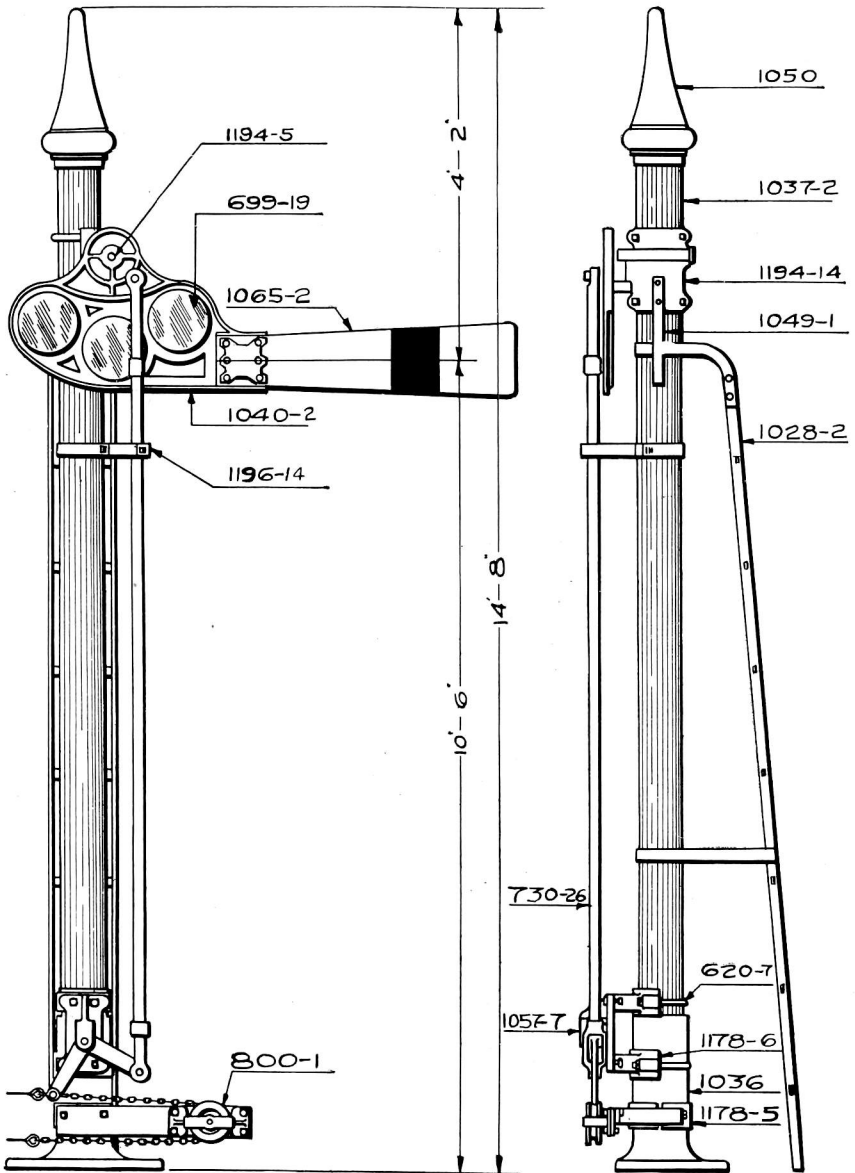
Lamps are not included in list prices, but Signals are furnished complete with Roundels and Fittings as shown. Signals can be furnished with any style Wood Semaphore Blade at same prices. Orders should specify Blade required, also color and number of Roundels.



1191-1

Trade No.	DESCRIPTION	List Price
1191-1	R. S. A. One Arm 90 deg. Upper Quadrant Pipe Operated Bridge or Bracket Signal, complete as shown.	\$72.00
1191-11	Same as above with R. S. A. 1041 Design "B" Spectacle. . .	72.00
1037-1	Mast Only.	7.20
1037-11	Mast with Base.	28.80
1036	Base.	16.20
1050	Pinnacle with Set Screw.	2.70
1194-14	Semaphore Bearing complete with Spring Stop and U Bolts for 1040 Spectacle.	9.00
1194-15	Semaphore Bearing complete with Spring Stop, Clamp and U Bolt for No. 1041 Spectacle.	10.00
1194-5	Shaft complete with Washer, Cotter and Pin.	2.25
1040-2	Semaphore Spectacle complete with Operating Stud, Roundel Rings and Bolts, Design "A".	17.10
1041-2	Semaphore Spectacle, complete with Operating Stud, Roundel Rings and Bolts, Design "B".	16.20
699-19	Glass Roundels, 8 $\frac{3}{8}$ " dia. Specify Color.	2.70
1065-2	Semaphore Blade complete with Blade Plate and Bolts.	3.60
1049-1	Lamp Bracket and Support complete with Nuts and Bolts for R. S. A. No. 1040 Spectacle.	4.50
1049-2	Lamp Bracket and Support complete with Nuts and Bolts for R. S. A. 1041 Spectacle.	3.60
730-1	Operating Rod complete with Screw Jaw and Eye Rod.	3.60
1057-7	One Way Crank Stand complete with Pin, Cotter and One 9" x 9" Crank.	3.60
1178-6	Clamp for Crank Stand complete with U Bolt and Bolts for fastening Stand.	2.95

HIGH ONE ARM 90 DEG. UPPER QUADRANT WIRE OPERATED BRIDGE OR BRACKET SIGNAL



2247-1

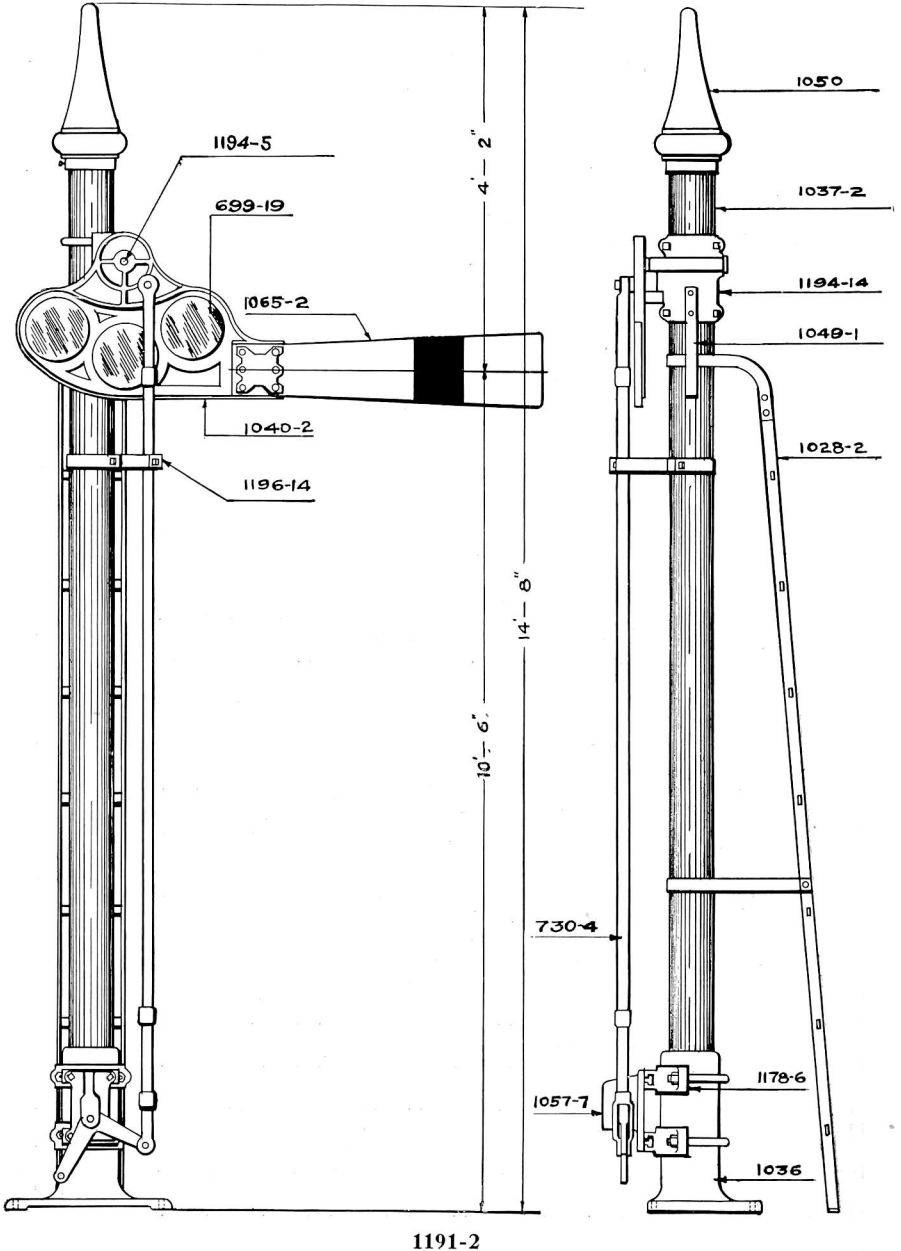


HIGH ONE ARM 90 DEG. UPPER QUADRANT WIRE OPERATED BRIDGE OR BRACKET SIGNAL

Lamps, Chain, Wire, Wire Eyes, Shackles and Split Links are not included in list prices, but Signals are furnished complete with Roundels and Fittings as shown. Signals can be furnished with any style Wood Semaphore Blade at same price. Orders should specify Blade required, also color and number of Roundels.

Trade No.	DESCRIPTION	List Price
2247-1	High One Arm 90 deg. Upper Quadrant Wire Operated Bridge or Bracket Signal, complete as shown.....	\$102.60
2247-2	Same as above except with R. S. A. 1041 Design "B" Spectacle	102.60
1037-2	Mast Only.....	21.60
1037-22	Mast with Base.....	43.20
1036	Base.....	16.20
1050	Pinnacle with Set Screw.....	2.70
1194-14	Semaphore Bearing complete with Spring Stop and U Bolts for No. 1040 Spectacle.....	9.00
1194-15	Semaphore Bearing complete with Spring Stop, Clamp and U Bolt for 1041 Spectacle.....	10.00
1194-5	Shaft complete with Washer, Cotter and Pin.....	2.25
1040-2	Semaphore Spectacle complete with Operating Stud, Roundel Rings and Bolts, Design "A".....	17.10
1041-2	Semaphore Spectacle, complete with Operating Stud, Roundel Rings and Bolts, Design "B".....	16.20
699-19	Glass Roundels, 8 $\frac{3}{8}$ " dia. Specify Color.....	2.70
1065-2	Semaphore Blade complete with Blade Plate and Bolts....	2.70
1049-1	Lamp Bracket and Support complete with Nuts and Bolts for R. S. A. 1040 Spectacle.....	3.60
1049-2	Lamp Bracket and Support complete with Nuts and Bolts for R. S. A. 1041 Spectacle.....	4.50
730-26	Operating Rod complete with Screw Jaw and Eye Rod....	4.50
1196-14	Pipe Guide, One Way, complete with Bolts for fastening to Mast.....	1.49
1057-7	One Way Crank Stand complete with Pin, Cotter and One 9" x 9" Crank.....	3.60
1178-5	Clamp for Signal Wheel complete with Back Half and Bolts for fastening Stand.....	2.95
1178-6	Clamp for Crank Stand complete with U Bolt and Bolts for fastening Stand.....	2.95
620-7	Clamp for Crank Stand complete with U Bolt and Bolts for fastening Stand.....	2.34
800-1	One Way Signal Wheel complete with Support Brace and Bolts.....	3.93
1028-2	Ladder complete with Top Pieces, Clamps, Stays and Bolts	9.00
703-46	Double Shackle complete with Pin and Cotter.....	.20
703-1	Wire Eyes.....	.04
703-11	Split Links, per C.....	3.60
703-16	$\frac{1}{4}$ " Proof Chain, per ft.....	.14

HIGH ONE ARM 90 DEG. UPPER QUADRANT PIPE OPERATED BRIDGE OR BRACKET SIGNAL





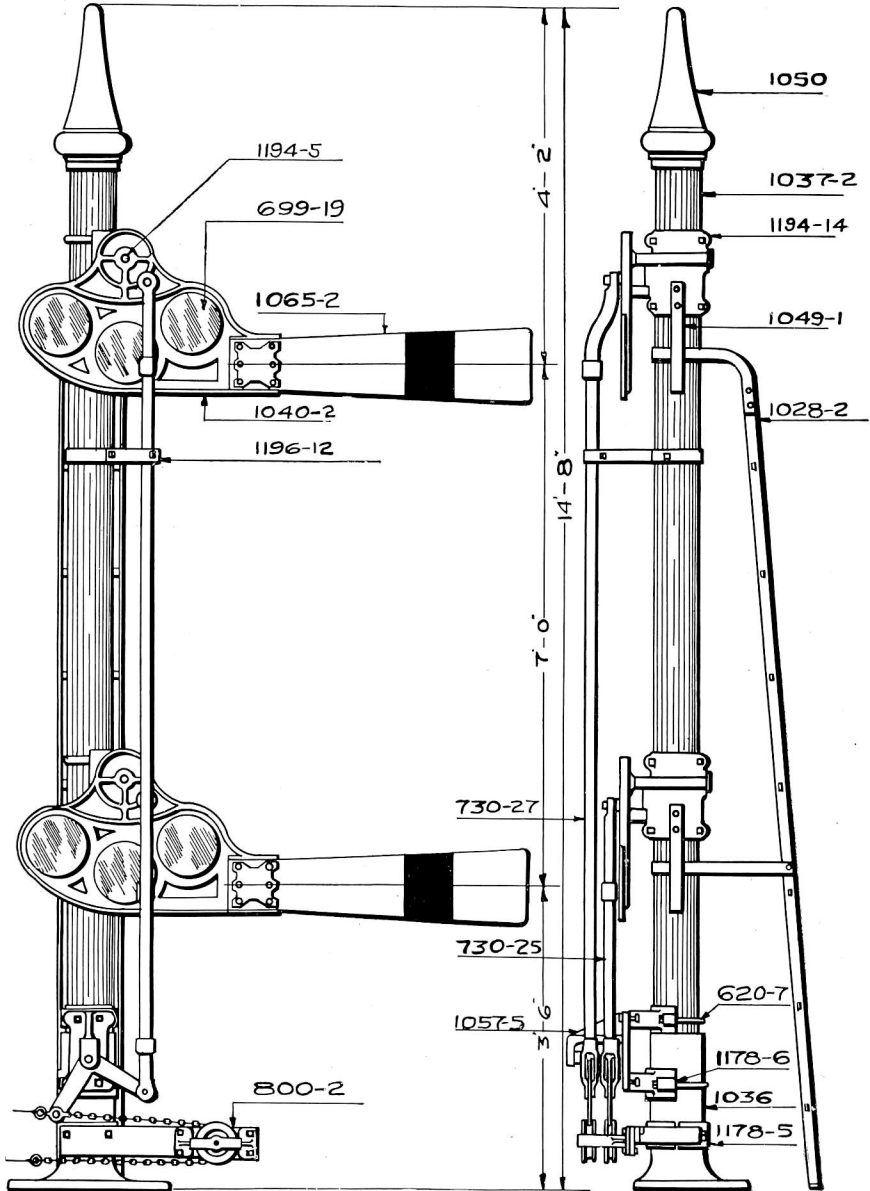
HIGH ONE ARM 90 DEG. UPPER QUADRANT PIPE OPERATED BRIDGE OR BRACKET SIGNAL

Lamps are not included in list prices, but Signals are furnished complete with Roundels.

Signals can be furnished with any style Wood Semaphore Blade at same prices. Orders should specify Blade required, also color and number of Roundels required.

Trade No.	DESCRIPTION	List Price
1191-2	High One Arm 90 deg. Upper Quadrant Pipe Operated Bridge or Bracket Signal, complete as shown.....	\$90.00
1191-22	Same as above except with R. S. A. 1041 Design "B" Spectacle.....	90.00
1037-2	Mast Only.....	21.60
1037-22	Mast with Base.....	43.20
1036	Base.....	16.20
1050	Pinnacle with Set Screw.....	2.70
1194-14	Semaphore Bearing complete with Spring Stop and U Bolts for No. 1040 Spectacle.....	9.00
1194-15	Semaphore Bearing complete with Spring Stop, Clamp and U Bolt for No. 1041 Spectacle.....	10.00
1194-5	Shaft complete with Washer, Cotter and Pin.....	2.25
1040-2	Semaphore Spectacle complete with Operating Stud, Roundel Rings and Bolts, Design "A".....	17.10
1041-2	Semaphore Spectacle, complete with Operating Stud, Roundel Rings and Bolts, Design "B".....	16.20
699-19	Glass Roundels, 8 $\frac{3}{8}$ " dia. Specify Color.....	2.70
1065-2	Semaphore Blade complete with Blade Plate and Bolts.....	2.70
1049-1	Lamp Bracket and Support complete with Nuts and Bolts for R. S. A. No. 1040 Spectacle.....	3.60
1049-2	Lamp Bracket and Support complete with Nuts and Bolts for R. S. A. No. 1041 Spectacle.....	4.50
730-4	Operating Rod complete with Screw Jaw and Eye Rod.....	4.50
1196-14	Pipe Guide, One Way, complete with Bolts for fastening to Mast.....	1.49
1057-7	One Way Crank Stand complete with Pin, Cotter and One 9" x 9" Crank.....	3.60
1178-6	Clamp for Crank Stand complete with U Bolt and Bolts for fastening Stand.....	2.95
1028-2	Ladder complete with Top Pieces, Clamps, Stays and Bolts..	9.00

LOW TWO ARM 90 DEG. UPPER QUADRANT WIRE OPERATED BRIDGE OR BRACKET SIGNAL



2248-1
2248-3

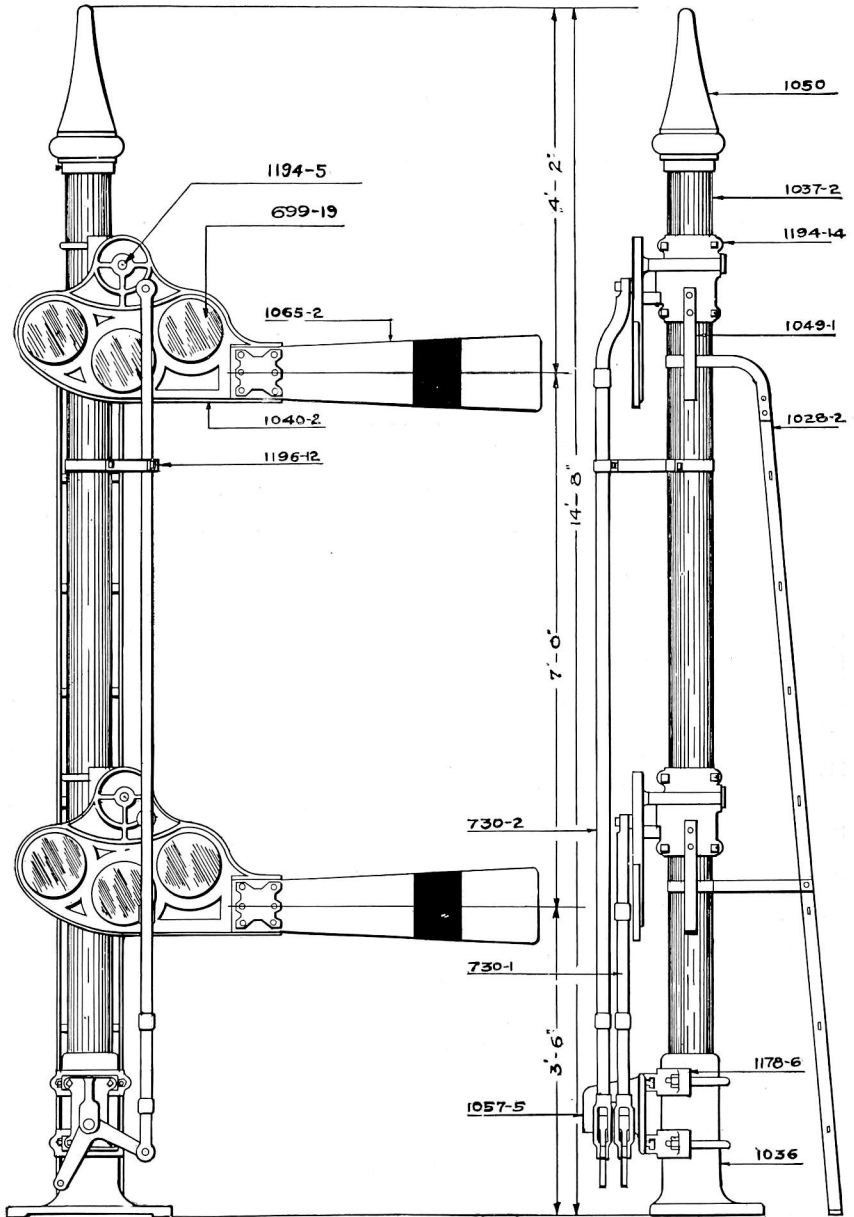


LOW TWO ARM 90 DEG. UPPER QUADRANT WIRE OPERATED BRIDGE OR BRACKET SIGNAL

Lamps, Chain, Wire, Wire Eyes, Shackles and Split Links are not included in list prices, but Signals are furnished complete with Roundels and Fittings as shown. When Signals are ordered with a Fixed Arm, orders should specify whether Arm is to be fixed in the 0 deg. or in the 45 deg. position. When Signals are ordered with Arms of limited travel, orders should specify whether they are limited from 0 deg. to 45 deg. or from 45 deg. to 90 deg. Prices for Limited Travel Arms are same as for Operative Arms. Signals can be furnished with any style Wood Semaphore Blade at same price. Orders should specify Blade required, also color and number of Roundels.

Trade No.	DESCRIPTION	List Price
2248-1	Low Two Arm 90 deg. Upper Quadrant Wire Operated Bridge or Bracket Signal with Two Arms Operative, as shown . . .	\$134.10
2248-2	Same as above with R. S. A. 1041 Design "B" Spectacle . . .	134.10
2248-3	Low Two Arm 90 deg. Upper Quadrant Wire Operated Bridge or Bracket Signal with One Arm Operative and One Arm Fixed, complete as shown . . .	127.80
2248-4	Same as above except with R. S. A. 1041 Design "B" Spectacle . . .	127.80
1037-2	Mast Only . . .	21.60
1037-22	Mast with Base . . .	43.20
1036	Base . . .	16.20
1050	Pinnacle with Set Screw . . .	2.70
1194-14	Semaphore Bearing complete with Spring Stop and U Bolts for 1040 Spectacle . . .	9.00
1194-15	Semaphore Bearing complete with Spring Stop and Clamp and U Bolt for 1041 Spectacle . . .	10.00
1194-5	Shaft complete with Washer, Cotter and Pin . . .	2.25
1040-2	Semaphore Spectacle complete with Operating Stud, Roundel Rings and Bolts, Design "A" . . .	17.10
1041-2	Semaphore Spectacle complete with Operating Stud, Roundel Rings and Bolts, Design "B" . . .	16.20
699-19	Glass Roundels, 8 $\frac{3}{8}$ " dia. Specify Color . . .	2.70
1065-2	Semaphore Blade complete with Blade Plate and Bolts . . .	3.60
1049-1	Lamp Bracket and Support complete with Nuts and Bolts for R. S. A. 1040 Spectacle . . .	4.50
1049-2	Lamp Bracket and Support complete with Nuts and Bolts for R. S. A. 1041 Spectacle . . .	3.60
730-25	Operating Rod for Lower Signal complete with Screw Jaw and Eye Rod . . .	4.50
730-27	Operating Rod for Upper Signal complete with Screw Jaw and Eye Rod . . .	1.49
1196-12	Pipe Guide, One Way, complete with Bolts for fastening to Mast . . .	5.40
1057-5	Two Way Crank Stand complete with Pin, Cotter, Separator and Two 9" x 9" Cranks . . .	2.95
1178-5	Clamp for Signal Wheel complete with Back Half and Bolts for fastening Stand . . .	2.95
1178-6	Clamp for Crank Stand complete with U Bolts and Bolts for fastening Stand . . .	2.34
620-7	Clamp for Crank Stand complete with U Bolt and Bolts for fastening . . .	4.44
800-2	Two Way Signal Wheel complete with Support, Brace and Bolts . . .	9.00
1028-2	Ladder complete with Top Pieces, Clamps, Stays and Bolts20
703-46	Double Shackle complete with Pin and Cotter04
703-1	Wire Eyes . . .	3.60
703-11	Split Links, per C14
703-16	$\frac{1}{4}$ " Proof Chain, per ft . . .	

R. S. A. TWO ARM 90 DEG. UPPER QUADRANT PIPE
OPERATED BRIDGE OR BRACKET SIGNAL



1191-3 and 1191-13

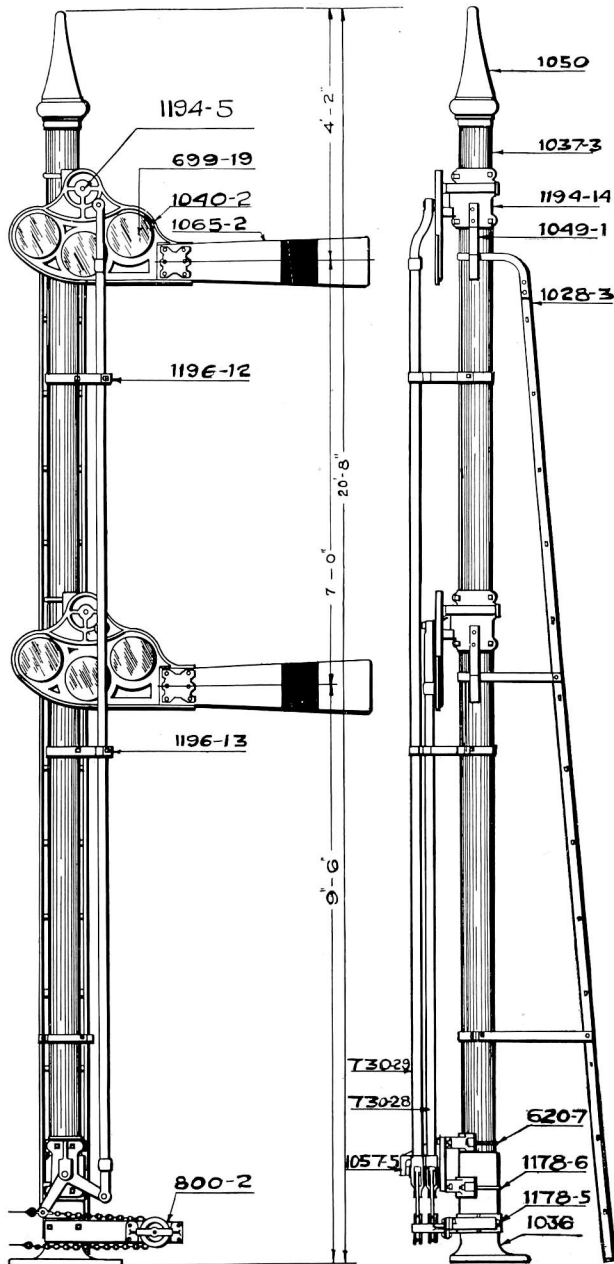


R. S. A. TWO ARM 90 DEG. UPPER QUADRANT PIPE OPERATED BRIDGE OR BRACKET SIGNAL

Lamps are not included in list prices, but Signals are furnished complete with Roundels and Fittings as shown. When Signals are ordered with a Fixed Arm, orders should specify whether Arm is to be fixed in the 0 deg. or in the 45 deg. position. When Signals are ordered with Arms of limited travel, orders should specify whether they are limited from 0 deg. to 45 deg. or from 45 deg. to 90 deg. Prices for Limited Travel Arms are same as for Operative Arm. Signals can be furnished with any style Wood Semaphore Blade at same price. Orders should specify Blade required, also color and number of Roundels.

Trade No.	DESCRIPTION	List Price
1191-3	R. S. A. Two Arm 90 deg. Upper Quadrant Pipe Operated Bridge or Bracket Signal with Two Arms Operative, complete as shown.....	\$126.00
1191-33	Same as above with R. S. A. No. 1041 Design "B" Semaphore Spectacle.....	126.00
1191-13	R. S. A. Two Arm 90 deg. Upper Quadrant Pipe Operated Bridge or Bracket Signal with One Arm Operative and One Arm Fixed, complete as shown.....	119.70
1191-23	Same as above except with R. S. A. No. 1041 Design "B" Semaphore Spectacle.....	119.70
1037-2	Mast Only.....	21.60
1037-22	Mast with Base.....	43.20
1036	Base.....	16.20
1050	Pinnacle with Set Screw.....	2.70
1194-14	Semaphore Bearing complete with Spring Stop and U Bolt for No. 1040 Spectacle.....	9.00
1194-15	Semaphore Bearing complete with Spring Stop, Clamp and U Bolt for No. 1041 Spectacle.....	10.00
1194-5	Shaft complete with Washer, Cotter and Pin.....	2.25
1040-2	Semaphore Spectacle with Operating Stud, Roundel Rings and Bolts, Design "A".....	17.10
1041-2	Semaphore Spectacle complete with Operating Stud, Roundel Rings and Bolts, Design "B".....	16.20
699-19	Glass Roundels, 8 $\frac{3}{8}$ " dia. Specify Color.....	2.70
1065-2	Semaphore Blade complete with Blade Plate and Bolts.....	3.60
1049-1	Lamp Bracket and Support complete with Nuts and Bolts for R. S. A. No. 1040 Spectacle.....	4.50
1049-2	Lamp Bracket and Support complete with Nuts and Bolts for R. S. A. No. 1041 Spectacle.....	3.60
730-1	Operating Rod for Lower Blade complete with Screw Jaw and Eye Rod.....	4.50
730-2	Operating Rod for Upper Blade complete with Screw Jaw and Eye Rod.....	1.49
1196-12	Pipe Guide, One Way, complete with Bolts for fastening to Mast.....	5.40
1057-5	Two Way Crank Stand complete with Pin, Cotter, Separators, and Two 9" x 9" Cranks.....	2.95
1178-6	Clamp for Crank Stand complete, with U Bolts and Bolts for fastening Crank Stand.....	9.00
1028-2	Ladder complete with Top Pieces, Clamps, Stays and Bolts..	

HIGH TWO ARM 90 DEG. UPPER QUADRANT WIRE OPERATED BRIDGE OR BRACKET SIGNAL



2249-1 and 2249-3

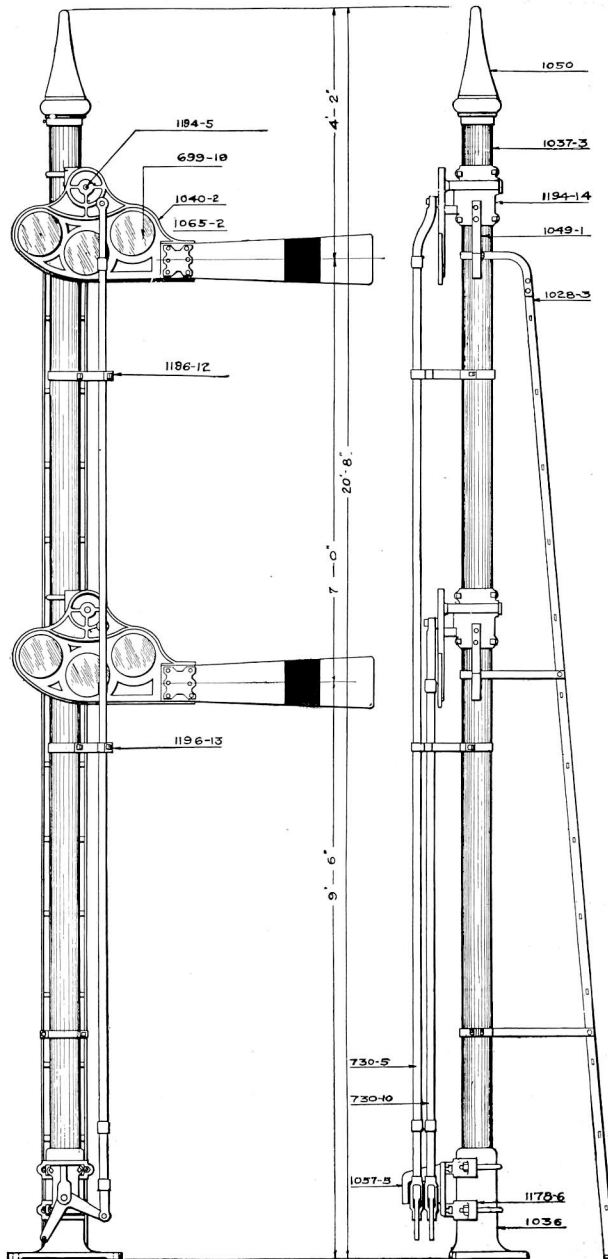


HIGH TWO ARM 90 DEG. UPPER QUADRANT WIRE OPERATED BRIDGE OR BRACKET SIGNAL

Lamps, Chain, Wire, Wire Eyes, Shackles and Split Links are not included in list prices, but Signals are furnished complete with Roundels and Fittings as shown. When Signals are ordered with a Fixed Arm, orders should specify whether Arm is to be fixed in the 0 deg. or in the 45 deg. position. When Signals are ordered with Arms of limited travel, orders should specify whether they are limited from 0 deg. to 45 deg. or from 45 deg. to 90 deg. Prices for Limited Travel Arms are same as for Operative Arms. Signals can be furnished with any style Wood Semaphore Blade at same price. Orders should specify Blade required, also color and number of Roundels.

Trade No.	DESCRIPTION	List Price
2249-1	High Two Arm 90 deg. Upper Quadrant Wire Operated Bridge and Bracket Signal with Two Arms Operative, complete as shown	\$156.00
2249-2	Same as above except with R. S. A. 1041 Design "B" Spectacle	156.00
2249-3	High Two Arm 90 deg. Upper Quadrant Wire Operated Bridge or Bracket Signal with One Arm Operative and One Arm fixed, complete as shown	149.70
2249-4	Same as above except with R.S.A. 1041 Design "B" Spectacle	149.70
1037-3	Mast Only	36.00
1037-33	" with Base	57.60
1036	Base	16.20
1050	Pinnacle with Set Screw	2.70
1194-14	Semaphore Bearing complete with Spring Stop and U Bolts for 1040 Spectacle	9.00
1194-15	Semaphore Bearing complete with Spring Stop and Clamp and U Bolt for 1041 Spectacle	10.00
1194-5	Shaft complete with Washer, Cotter and Pin	2.25
1040-2	Semaphore Spectacle complete with Operating Stud, Roundel Rings and Bolts, Design "A"	17.10
1041-2	Semaphore Spectacle, complete with Operating Stud, Roundel Rings and Bolts, Design "B"	16.20
699-19	Glass Roundels, 8 $\frac{3}{8}$ " dia. Specify Color	2.70
1065-2	Semaphore Blade complete with Blade Plate and Bolts	2.70
1049-1	Lamp Bracket and Support complete with Nuts and Bolts for R. S. A. 1040 Spectacle	3.60
1049-2	Lamp Bracket and Support complete with Nuts and Bolts for R. S. A. 1041 Spectacle	4.50
730-28	Operating Rod for Lower Signal complete with Screw Jaw and Eye Rod	4.50
730-29	Operating Rod for Upper Signal complete with Screw Jaw and Eye Rod	5.40
1196-12	Pipe Guide, One Way, complete with Bolts for fastening to Mast	1.49
1196-13	Pipe Guide complete, Two Way with Bolts for fastening to Mast	1.76
1057-5	Two Way Crank Stand complete with Pin, Cotter, Separators and Two 9" x 9" Cranks	5.40
1178-5	Clamp for Signal Wheel complete with Back Half and Bolts for fastening Stand	2.95
1178-6	Clamp for Crank Stand complete with U Bolts and Bolts for fastening Stand	2.95
620-7	Clamp for Crank Stand complete with U Bolts and Bolts for fastening Stand	2.34
800-2	Two Way Signal Wheel complete with Support, Brace and Bolts	4.44
1028-3	Ladder complete with Top Pieces, Clamps, Stays and Bolts for fastening	13.95
703-46	Double Shackle complete with Pin and Cotter	.20
703-1	Wire Eyes	.04
703-11	Split Links, per C.	3.60
703-16	$\frac{3}{4}$ " Proof Chain, per ft.	.14

HIGH TWO ARM 90 DEG. UPPER QUADRANT PIPE OPERATED BRIDGE OR BRACKET SIGNAL



1191-4 and 1191-14

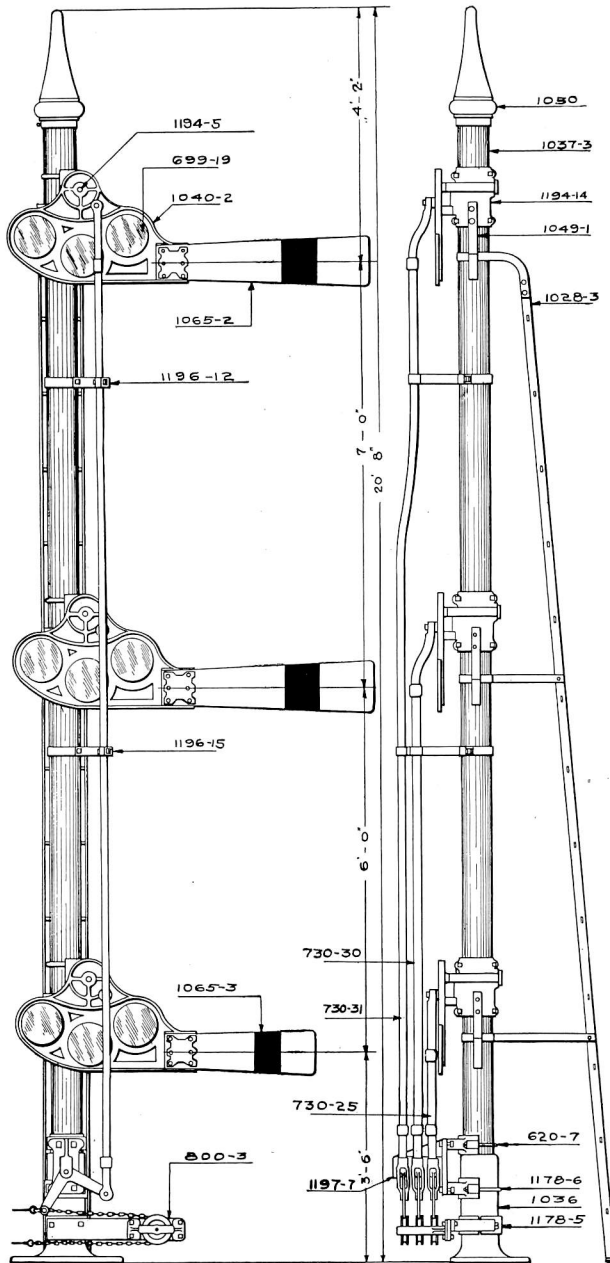


HIGH TWO ARM 90 DEG. UPPER QUADRANT PIPE OPERATED BRIDGE OR BRACKET SIGNAL

Lamps are not included in list prices, but Signals are furnished complete with Roundels and Fittings as shown. When Signals are ordered with a Fixed Arm, orders should specify whether Arm is to be fixed in the 0 deg. or in the 45 deg. position. When Signals are ordered with Arms of limited travel, orders should specify whether they are limited from 0 deg. to 45 deg. or from 45 deg. to 90 deg. Prices for Limited Travel Arms are same as for Operative Arms. Signals can be furnished with any style Wood Semaphore Blade at same price. Orders should specify Blade required, also color and number of Roundels.

Trade No.	DESCRIPTION	List Price
1191-4	High Two Arm 90 deg. Upper Quadrant Pipe Operated Bridge or Bracket Signal with Two Arms Operative, complete as shown.....	\$144.00
1191-44	Same as above excepting with R. S. A. No. 1041 Design "B" Spectacle.....	144.00
1191-14	High Two Arm 90 deg. Upper Quadrant Pipe Operated Bridge or Bracket Signal with One Arm Operative and One Arm Fixed, complete as shown.....	137.70
1191-24	Same as above excepting with R. S. A. No. 1041 Design "B" Spectacle.....	137.70
1037-3	Mast Only.....	36.00
1037-33	Mast with Base.....	57.60
1036	Base.....	16.20
1050	Pinnacle with Set Screw.....	2.70
1194-14	Semaphore Bearing complete with Spring Stop and U Bolts for No. 1040 Spectacle.....	9.00
1194-15	Semaphore Bearing complete with Spring Stop, Clamp and U Bolt for No. 1041 Spectacle.....	10.00
1194-5	Shaft complete with Washer, Cotter and Pin.....	2.25
1040-2	Semaphore Spectacle complete with Operating Stud, Roundel Rings and Bolts, Design "A".....	17.10
1041-2	Semaphore Spectacle complete with Operating Stud, Roundel Rings and Bolts, Design "B".....	16.20
699-19	Glass Roundels, 8 $\frac{3}{8}$ " dia. Specify Color.....	2.70
1065-2	Semaphore Blade complete with Blade Plate and Bolts.....	2.70
1049-1	Lamp Bracket and Support complete with Nuts and Bolts for R. S. A. No. 1040 Spectacle.....	3.60
1049-2	Lamp Bracket and Support complete with Nuts and Bolts for R. S. A. No. 1041 Spectacle.....	4.50
730-10	Operating Rod for Lower Signal complete with Screw Jaw and Eye Rod.....	4.50
730-5	Operating Rod for Upper Signal complete with Screw Jaw and Eye Rod.....	5.40
1196-12	Pipe Guide, One Way, complete with Bolts for fastening to Mast.....	1.49
1196-13	Pipe Guide, Two Way, complete with Bolts for fastening to Mast.....	1.76
1057-5	Two Way Crank Stand complete with Pin, Cotter, Separators and Two 9" x 9" Cranks.....	5.40
1178-6	Clamp for Crank Stand, complete with U Bolt and Bolts for fastening Stand.....	2.95
1028-3	Ladder complete with Top Pieces, Clamps, Stays and Bolts for fastening.....	13.95

THREE ARM 90 DEG. UPPER QUADRANT WIRE OPERATED BRIDGE OR BRACKET SIGNAL



2250-1 and 2250-3

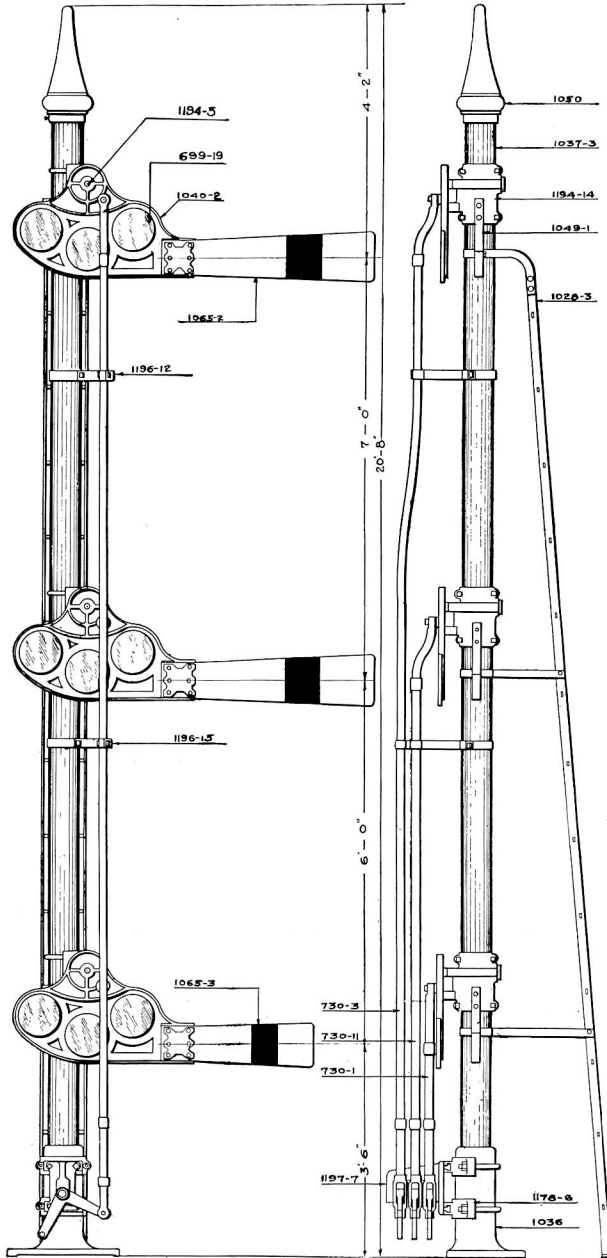


THREE ARM 90 DEG. UPPER QUADRANT WIRE OPERATED BRIDGE OR BRACKET SIGNAL

Lamps, Chain, Wire, Wire Eyes, Shackles and Split Links are not included in list prices, but Signals are furnished complete with Roundels and Fittings as shown. When Signals are ordered with a Fixed Arm, orders should specify whether Arm is to be fixed in the 0 deg. or in the 45 deg. position. When Signals are ordered with Arms of limited travel, orders should specify whether they are limited from 0 deg. to 45 deg. or from 45 deg. to 90 deg. Prices for Limited Travel Arms are same as for Operative Arms. Signals can be furnished with any style Wood Semaphore Blade at same price. Orders should specify Blade required, also color and number of Roundels.

Trade No.	DESCRIPTION	List Price
2250-1	Three Arm 90 deg. Upper Quadrant Wire Operated Bridge and Bracket Signal, Three Arms Operative, complete as shown .	\$187.25
2250-2	Same as above except with R.S.A. 1041 Design "B" Spectacle	187.25
2250-3	Three Arm 90 deg. Upper Quadrant Wire Operated Bridge or Bracket Signal, Two Arms Operative and One Arm Fixed, complete as shown	180.95
2250-4	Same as above except with R.S.A. 1040 Design "B" Spectacle	180.95
1037-3	Mast Only	36.00
1037-33	Mast with Base	57.60
1036	Base	16.20
1050	Pinnacle with Set Screw	2.70
1194-14	Semaphore Bearing complete with Spring Stop and U Bolts for 1040 Spectacle	9.00
1194-15	Semaphore Bearing complete with Spring Stop, Clamp and U Bolt for 1041 Spectacle	10.00
1194-5	Shaft complete with Washer, Cotter and Pin	2.25
1040-2	Semaphore Spectacle complete with Operating Stud, Roundel Rings and Bolts, Design "A"	17.10
1041-2	Semaphore Spectacle, complete with Operating Stud, Roundel Rings and Bolts, Design "B"	16.20
699-19	Glass Roundels, 8 3/8" dia. Specify Color	2.70
1065-2	Semaphore Blade complete with Blade Plate and Bolts	2.70
1049-1	Lamp Bracket and Support complete with Nuts and Bolts for R. S. A. 1040 Spectacle	3.60
1049-2	Lamp Bracket and Support complete with Nuts and Bolts for R. S. A. 1041 Spectacle	4.50
730-25	Operating Rod for Lower Signal complete with Screw Jaw and Eye Rod	3.60
730-30	Operating Rod for Middle Signal complete with Screw Jaw and Eye Rod	4.50
730-31	Operating Rod for Upper Signal complete with Screw Jaw and Eye Rod	5.40
1196-12	Pipe Guide, One Way, complete with Bolts for fastening to Mast	1.49
1196-15	Pipe Guide complete, Two Way with Bolts for fastening to Mast	1.76
1197-7	Three Way Crank Stand complete with Pin, Cotter, Separator and Three 9" x 9" Cranks	7.20
1178-5	Clamp for Signal Wheel complete with Back Half and Bolts for fastening Stand	2.95
1178-6	Clamp for Crank Stand complete with U Bolts and Bolts for fastening Stand	2.95
620-7	Clamp for Crank Stand complete with U Bolt and Bolts for fastening Stand	2.34
800-3	Three Way Signal Wheel complete with Support Brace and Bolts	4.88
1028-3	Ladder complete with Top Pieces, Clamps, Stays and Bolts	13.95
703-40	Double Shackle complete with Pin and Cotter20
703-1	Wire Eyes04
703-11	Split Links, per C.	3.60
703-16	1/4" Proof Chain, per ft.14

R. S. A. THREE ARM 90 DEG. UPPER QUADRANT PIPE OPERATED BRIDGE OR BRACKET SIGNAL



1191-5 and 1191-15



R. S. A. THREE ARM 90 DEG. UPPER QUADRANT PIPE OPERATED BRIDGE OR BRACKET SIGNAL

Lamps are not included in list prices, but Signals are furnished complete with Roundels and Fittings. When Signals are ordered with a Fixed Arm, orders should specify whether Arm is to be fixed in the 0 deg. or in the 45 deg. position. When Signals are ordered with Arms of limited travel, orders should specify whether they are limited from 0 deg. to 45 deg. or from 45 deg. to 90 deg. Prices for Limited Travel Arms are same as for Operative Arms. Signals can be furnished with any Style Wood Semaphore Blade at same price. Orders should specify Blade required, also color and number of Roundels.

Trade No.	DESCRIPTION	List Price
1191-5	R. S. A. Three Arm 90 deg. Upper Quadrant Pipe Operated Bridge or Bracket Signals with Three Arms Operative, complete as shown	\$180.00
1191-55	Same as above except with R. S. A. 1041 Design "B" Semaphore Spectacle	180.00
1191-15	R. S. A. Three Arm 90 deg. Upper Quadrant Pipe Operated Bridge and Bracket Signal with Two Arms Operative and One Arm Fixed, complete as shown	173.70
1191-25	Same as above except with R. S. A. 1041 Design "B" Semaphore Spectacle	173.70
1037-3	Mast Only	36.00
1037-33	Mast with Base	57.60
1036	Base	16.20
1050	Pinnacle with Set Screw	2.70
1194-14	Semaphore Bearing complete with Spring Stop and U Bolts for No. 1040 Spectacle	9.00
1194-15	Semaphore Bearing complete with Spring Stop, Clamp and U Bolt for No. 1041 Spectacle	10.00
1194-5	Shaft complete with Washer, Cotter and Pin	2.25
1040-2	Semaphore Spectacle complete with Operating Stud, Roundel Rings and Bolts, Design "A"	17.10
1041-2	Semaphore Spectacle, complete with Operating Stud, Roundel Rings and Bolts, Design "B"	16.20
699-19	Glass Roundels, 8 $\frac{3}{8}$ " dia. Specify Color	2.70
1065-2	Semaphore Blade complete with Blade Plate and Bolts	3.60
1049-1	Lamp Bracket and Support complete with Nuts and Bolts for R. S. A. No. 1040 Spectacle	4.50
1049-2	Lamp Bracket and Support complete with Nuts and Bolts for R. S. A. No. 1041 Spectacle	3.60
730-1	Operating Rod for Lower Signal complete with Screw Jaw and Eye Rod	4.50
730-11	Operating Rod for Middle Signal complete with Screw Jaw and Eye Rod	5.40
730-3	Operating Rod for Upper Signal complete with Screw Jaw and Eye Rod	1.49
1196-12	Pipe Guide, One Way, complete with Bolts for fastening to Mast	1.76
1196-15	Pipe Guide complete, Two Way with Bolts for fastening to Mast	7.20
1197-7	Three Way Crank Stand complete with Pin, Cotter, Separators and Three 9" x 9" Cranks	2.95
1178-6	Clamp for Crank Stand complete with U Bolts and Bolts for fastening Stand	13.95
1028-3	Ladder complete with Top Pieces, Clamps, Stays and Bolts for fastening	