

---

---

**≈CHICAGO≈**  
**RAILWAY SIGNAL**  
**AND SUPPLY COMPANY**

---

---

GENERAL OFFICES  
C·H·I·C·A·G·O



1914

Catalogue and Price List

of

Electric and Mechanical Railway Signals

Highway Crossing Alarms

Signaling Materials and Signal Accessories

RAILROAD SUPPLIES

for

Steam and Electric Railroads

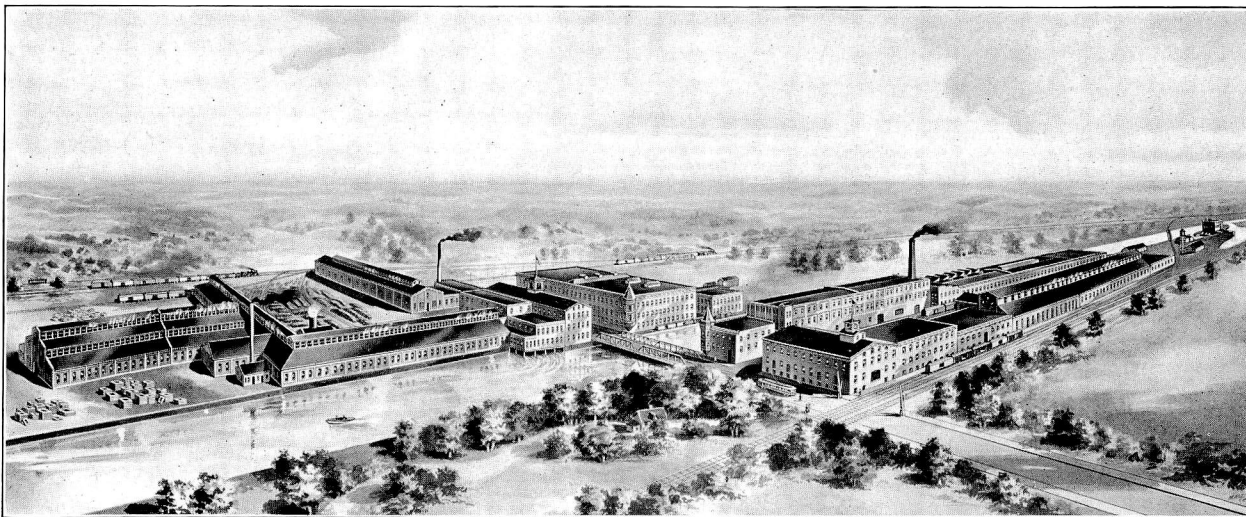


Manufactured By

Chicago Railway Signal & Supply Company

Main Office—Chicago, Illinois

Works—Carpentersville, Illinois



**Works—Carpentersville, Illinois**

The Works of the Chicago Railway Signal & Supply Company are located at Carpentersville, Illinois, (just north of Elgin), 48 miles northwest of Chicago, on Chicago & North-Western Railroad and the Aurora, Elgin & Chicago Ry. The plant occupies both sides of the Fox River, is modern throughout, equipped with up-to-date machinery and special equipment for the manufacture of our products with accuracy and at a low cost of production. Plant is operated by water, steam and electric power, and consists of complete machine shops, forge shops, wood-working plant, electro-plating works, pattern shop, iron, brass, copper and zinc foundries.

Printed and Bound for the  
Chicago Railway Signal & Supply Co.  
By Baker, Jones & Co., Buffalo, New York

## INDEX

Name	Page	Name	Page
<b>A</b>			
Acute Cranks	S-26	Bells, Mechanical Crossing	E-27
"    "    with Horizontal		"    "    Tower	E-30
Crank Stands	S-21	"    Motor Type	F-12
Adjustable Arm Cranks	R-38	"    Time	F-14
Lock Rods	T-70	Belts, Linemen's	G-20
Adjusting Screw, Pipe	S-15	Blade Clamps for Semaphore Blade	R-31
"    Wire	S-30	Blades, Semaphore	R-30
Adjustments, Switch and Derail	T-64	Blocks, Linemen's Wood	G-19
Ammeters	I-12	Block Signals, Automatic Electric	
Anchor Bolts	S-51, R-2	Light Type	A-2
Posts	S-50	Blue Vitriol	J-3
Annunciators	A-15	Bolt Locks	T-36
Anvils	X-11	Bolts, Anchor	S-51, R-2
Arresters, Lightning	I-2	Cross Arm	G-12
Attachments for Changing from		Foundation	S-51
Pipe to Wire Leads	S-45	Bond Wire Protectors	G-5
Automatic Electric Light Type		Wires	G-4
Block Signals	A-2	Bonding Drills	G-6
Axle Insulators	H-11	Pins	G-2
<b>B</b>			
Back Spectacles	R-15	Box Wheels, Horizontal	S-41
"    "    for Dwarf Signals	O-18	Boxes, Battery	L-7
Bags, Tool	G-18	Relay	K-2
Balance Levers for Pipe Operated		Braces, Cross Arm	G-12
Signals	R-37	Brackets, Cantilever	R-40
Balance Levers for Wire Operated		Bracket Post Cranks	R-38
Signals	R-36	"    Signals	N-14
Bases for Ground, Bridge and		"    Posts	R-4
Bracket Signals	R-2	"    "    with Signals	N-3
Bases for Cable Poles and Highway		"    Signals	N-14
Crossing Alarms	D-20	Brackets, Lamp	R-29
Batteries, Caustic Soda	J-9	"    for Crossing Bells	K-23
Edison B. S. Co.	J-9	"    Relay Boxes and Indi-	
Gordon	J-9	cators	K-22
Gravity	J-3	Brass Connectors	I-6
Storage	J-10	Terminals	I-7
Portable Storage	J-12	Bridge Couplers and Locks	S-46
Battery Boxes	L-7	Signals	N-14
Brushes	J-15	Warnings	U-2
Chutes	L-2	Brushes, Battery	J-15
Chute Pipe Sockets	K-19	Bushings, Pole Insulating	K-23
"    Posts	K-21	<b>C</b>	
Coppers	J-6	Cable Outlets	D-21
Hydrometers	J-14	Poles	D-2, D-17
Jars	J-8	"    "    with Indicators	D-15
Knives	J-15	"    "    Relay Boxes	D-3, D-17
Polarity Indicators	J-15	"    "    and	
Renewals	J-9	Battery Chutes	D-8
Storometers	J-14	Cable Poles with Relay Boxes and	
Syringes	J-14	Indicators	D-16
Zincs	J-4	Cable Reels	X-9
Bearings, Semaphore	R-16	Cantilever Brackets	R-40
Bells, Annunciator	F-2	Chain, Signal	S-30
Highway Crossing	F-3	Chain Wheel Foundations	S-50
Indicator	F-2	Wheels, Box	S-41
Locomotive Type	F-8	"    Horizontal	S-35
		"    Tandem	S-38
		"    Vertical	S-32

Name	Page	Name	Page
Channel Pins.....	G- 2	Dummy Masts.....	R-39
“ Pin Tools.....	G- 3	Dwarf Signals.....	O- 2
Chutes, Battery.....	L- 2	“ Signal Spectacles.....	O-18
Clamps, Crank Stand.....	R-20		
“ Guy Wire.....	S-30	<b>E</b>	
“ Semaphore Blade.....	R-31	Edison B. S. Co. Batteries.....	J- 9
“ Splicing.....	G-16	Electric Crossing Bells.....	F- 3
Climbers, Linemen's.....	G-20	“ Bells, Annunciator and	
Clips, Wire Rope.....	S-30	Tower Indicator.....	F- 2
Commutators.....	C- 6	Electric Flags.....	F-16
Compensator Foundations.....	S-50	“ Lever Locks.....	C-18
Compensators, Pipe.....	S-24	“ Light Type Block Signals.....	A- 2
“ Wire.....	R-44	“ Table Levers.....	C-30
Connectors.....	I- 6	Elgin Wrenches.....	G-15
Contactors, Trolley Wire.....	C-29	End Posts, Fibre.....	H- 8
Coppers, Battery.....	J- 6	Escapement Cranks.....	O-18
Copying Presses.....	X- 5	Expanding Rail Jacks.....	G-22
Cranks.....	S-26	Eye Rods.....	S-15
“ Adjustable Arm.....	R-38		
“ Escapement and Operating	O-18	<b>F</b>	
Crank Stand Clamps.....	R-20	Fibre End Posts.....	H- 8
“ Foundations.....	S-50	“ Insulations for Rail Joints..	H- 7
“ Horizontal with Acute		Figures and Letters, Steel Stencils..	I -11
Cranks.....	S-21	Flags, Electric.....	F-16
Crank Stands, Horizontal with Ob-		Flag Station Signals.....	P-14
tuse Cranks.....	S-20	Floor Levers, Mechanical.....	Q- 6
Crank Stands, Horizontal with Rad-		“ Pushes.....	C-25
ial Cranks.....	S-22	Foundation Bolts.....	S-51, R- 2
Crank Stands, Horizontal with		Foundations, Chain Wheel.....	S-50
Right Angle Cranks.....	S-22	“ Compensator.....	S-50
Crank Stands, Horizontal with		“ Crank Stand.....	S-50
Straight Arm Cranks.....	S-23	“ Ladder.....	R- 2
Crank Stands, Horizontal with		“ Pipe Carrier.....	S-48
Three Arm Cranks.....	S-23	“ Post.....	S-50
Crank Stands, Vertical with Right		Freight House Trucks.....	X- 2
Angle Cranks.....	S- 4	Friction Jacks.....	X- 8
Crank Stands, Vertical with Straight		Front Rods for Derails, Plain.....	T-56
Arm Cranks.....	S- 5	“ “ “ Insulated.....	T-58
Crank Stands for Signal Mast Bases	R-33	“ “ “ Double Slip	
Cross Arms.....	G-10	Switches, Plain.....	T-52
“ Arm Bolts, Braces and Pins.....	G-12	Front Rods for Double Slip	
Crossing Alarms, Highway.....	E- 2	Switches, Insulated.....	T-54
“ Bell Brackets.....	K-23	Front Rods for Movable Point Frogs,	
“ Bells, Electric.....	F- 3	Plain.....	T-48
“ “ Mechanical.....	E-27	Front Rods for Movable Point Frogs,	
“ Signs.....	E-33	Insulated.....	T-50
Cutting Pliers.....	G-17	Front Rods for Single Slip Switches,	
		Plain.....	T-44
		Front Rods for Single Slip Switches,	
		Insulated.....	T-46
<b>D</b>		<b>G</b>	
Deflecting Stands.....	S-10	Gain Stroke Wheels.....	S -34
“ “ Waterproof Type.....	S- 6	Gasoline Furnaces.....	G-19
Derail Rod Guides.....	T-31	“ Torches.....	G-18
Derail with Facing Point Lock, T-14,	T-15	Glass Battery Jars.....	J- 8
Derail with Switch and Lock Move-		“ Insulators.....	G-12
ment.....	T- 4, T- 5	“ Semaphore Roundels.....	R-32
Detector Bars.....	T-29	Gordon Batteries.....	J- 9
“ Bar Rail Clips.....	T-16	Gravity.....	J- 3
“ “ Guides.....	T-30	Ground Levers.....	Q- 9
“ “ Motion Plates.....	T-28	“ Rods.....	I- 5
“ “ Stops.....	T-30	“ Signals.....	M- 2
Double Jaws.....	S-14	“ Tubes.....	I - 5
Drills, Track.....	G- 6		
“ Machine Shop.....	X-10		



Name	Page	Name	Page
Guides, Derail Rod.....	T-31	Levers, Floor.....	Q- 6
“ Detector Bar.....	T-30	“ Ground.....	Q- 9
“ Pipe.....	R-20	“ Table.....	Q- 3
Guy Wire Clamps.....	S-30	“ Electric Table.....	C-30
		“ Wall.....	Q- 3
<b>H</b>		Lightning Arresters.....	I- 2
Highway Crossing Alarms.....	E- 2	Line Wire, Bare.....	I- 9
“ “ Bells.....	F- 3	“ “ Insulated.....	I- 9
“ “ Signs.....	E-33	Linemen's Tools.....	G-16
Horizontal Box Wheels.....	S-41	Links, Solid.....	S-15
“ Chain Wheels.....	S-35	Lock Rods, Adjustable.....	T-70
“ Tandem Wheels.....	S-38	“ “ Bent.....	T-68
Hydrometers, Battery.....	J-14	“ “ Combination.....	T-31
		“ “ Insulated.....	T-65
<b>I</b>		“ “ Offset.....	T-66
Indicator Brackets.....	K-22	Locks, Bolt.....	T-36
“ Posts.....	K-20	“ Bridge.....	S-46
Indicators, Switch.....	A- 9	“ Lever.....	C-18
“ Tower.....	A- 6	“ Plunger.....	T-34
“ with Cable Pole.....	D-15	“ Signal.....	I-14
“ “ “ and.....		“ Switch.....	T-40
Relay Box.....	D-16	Locomotive Type Highway Crossing	
Indicators with Post.....	D-14	Bells.....	F- 8
Insulator, Axle.....	H-11	Lugs, Pipe Line.....	S-14
Insulated Wire.....	I- 8	“ Switch Point.....	T-32
Insulating Pole Bushings.....	K-23		
Insulations, Pipe and Rod.....	S-16	<b>M</b>	
“ Rail Joints.....	H- 7	Masts, Dummy.....	R-39
Insulators, Glass.....	G-12	“ Signal.....	R- 2
Interlocking Relays.....	B-2, B- 5	“ Train Order Signal.....	P-13
		Mechanical Crossing Bells.....	E-27
<b>J</b>		“ Slots.....	R-42
Jacks, Rail Expanding.....	G-22	“ Tower Bells.....	E-30
“ Friction.....	X- 8	Melting Pots.....	G-19
Jack Screws.....	X- 6	Motion Plates for Detector Bars..	T-28
Jacks, Locomotive.....	X- 6	Motor Driven Type Highway Cross-	
“ Pulling.....	X- 9	ing Bells.....	F-12
“ Bell Base Ratchet.....	X- 7	Movements, Switch and Lock.....	T-40
Jars, Battery.....	J- 8		
Jaws, Double.....	S-14	<b>N</b>	
“ Screw.....	S-13	Neutral Relays.....	B-11
“ Solid.....	S-12	“ “ High Voltage Type.....	B-30
<b>K</b>		<b>O</b>	
Keys, Padlock.....	I-14	Obtuse Cranks.....	S-26
“ Strap.....	C-33	“ “ with Horizontal.....	
Knife Switches.....	C-33	Crank Stands.....	S-20
Knives, Battery.....	J-15	Operating Cranks for Dwarf Signals	O-18
		“ Rods.....	R-20
<b>L</b>		Outlets, Cable.....	D-21
Ladder Foundations.....	R- 2		
Ladders for Signals.....	R-24, R-28	<b>P</b>	
Ladles, Pouring.....	G-19	Packing Boxes for Pipe or Wire	
Lag Screw Wrenches.....	G-21	Lines.....	S-44
Lamp Bracket Holders.....	R-19	Padlocks and Keys.....	I-14
“ Brackets.....	R-29	Pastes, Soldering.....	I-15
Lamps, Semaphore.....	R-46	Pinnacles.....	D-21, R- 2
Letters and Figures, Steel Stencils.	I-11	Pins, Channel.....	G- 2
Lever Locks.....	C-18	“ Cross Arm.....	G-12
Levers, Balance for Pipe Operated		Pipe Adjusting Screws.....	S-15
Signals.....	R-37	“ and Rod Insulations.....	S-16
Levers, Balance for Wire Operated		“ Carriers.....	S-27
Signals.....	R-36	“ Carrier Foundations.....	S-48





Name	Page	Name	Page
Soldering Compounds.....	I-15	Trunking and Stakes.....	G- 8
“ Pastes.....	I-15	Tubes, Ground.....	I- 5
Solid Jaws.....	S-12	Turnbuckles.....	S-30
“ Links.....	S-15		
Spectacles, Back.....	R-15	<b>U</b>	
“ Dwarf Signal.....	O-18	U Bolts for Cross Arm.....	G-12
“ Lower Quadrant.....	R-10, R-12	Units, Resistance.....	I-13
“ Train Order.....	R-10	Universal Pipe Carriers.....	S-27
“ Upper Quadrant.....	R-8, R-10	Up and Down Rods.....	R-20
Splicing Clamps.....	G-16		
Stakes, Trunking.....	G- 9	<b>V</b>	
“ Wire Carrier.....	S-51	Ventilators, Relay Box and Signal	
Stencils.....	I-11	Case.....	D-21, K-23
Steps, Pole.....	G-14	Vertical Chain Wheels.....	S-32
Stops, Detector Bar.....	T-30	“ Cranks for Signal Mast	
Storage Batteries.....	J-10, J-12	Bases.....	R-33
Storometers, Battery.....	J-14	Vertical Crank Stand with Right	
Straight Arm Cranks.....	S-26	Angle Cranks.....	S- 4
“ with Horizontal		Vertical Crank Stand with Straight	
Crane Stand.....	S-23	Arm Cranks.....	S- 5
Straight Arm Cranks with Vertical		Vises.....	X-10
Crane Stand.....	S- 5	Vitriol, Blue.....	J- 3
Strap Keys.....	C-33	Voltmeters.....	I-12
“ Pipe Carriers.....	S-27		
Stuffing Boxes for Pipe or Wire		<b>W</b>	
Leads.....	S-44	Wall Levers, Mechanical.....	Q- 3
Switch and Derail Adjustments.....	T-64	Warnings, Bridge.....	U- 2
“ Lock Movement.....	T- 3	Wedge Blocks, Switch.....	H-10
“ “ Movements.....	T-40	Wheels, Gain Stroke.....	S-34
“ Boxes.....	C- 2	“ Horizontal Box.....	S-41
“ Indicators.....	A- 9	“ “ Chain.....	S-35
“ Layouts.....	T- 2	“ Signal.....	R-34
“ Point Lugs.....	T-32	“ Tandem.....	S-38
“ Separators.....	T-31	“ Vertical Chain.....	S-32
“ Throw Rods.....	T-63	“ “ Roller.....	
“ Wedge Blocks.....	H-10	Bearing.....	S-34
Switches, Knife.....	C-33	Wire, Adjusting Screws.....	S-30
“ Pole Changing.....	C-33	Wires, Bond.....	G- 4
Syringes, Battery.....	J-14	Wire Carrier Stakes.....	S-51
		“ Carriers.....	S-42
<b>T</b>		“ Clamps, Guy.....	S-30
Table Levers, Mechanical.....	Q- 3	“ Compensators.....	R-44
“ Electric.....	C-30	“ Grips.....	G-21
Tags.....	I-10	“ Insulated.....	I- 8
Tape.....	I-15	“ Insulating Bushings.....	K-23
Terminals.....	I- 7	“ Line.....	I- 9
Three Arm Cranks.....	S-26	“ Packing Boxes.....	S-44
“ “ with Horizontal		“ Rope Clips.....	S-30
Crane Stands.....	S-23	“ Shackles.....	S-30
Through Bolts, Cross Arm.....	G-12	“ Steel Signal.....	I- 9
Throw Rods, Switch.....	T-63	“ Tags.....	I-10
Tie Rods, Plain and Insulated.....	T-60	“ Trunking.....	G- 8
Tool Bags.....	G-18	“ “ Stakes.....	G- 9
Torches, Gasoline.....	G-18	Wrenches, Elgin.....	G-15
Tower Bells.....	E-30, F- 2	“ Lag Screw.....	G-21
“ Indicators.....	A- 6	“ Pipe.....	G-15
Track Drills.....	G- 6	“ Socket for Binding Post.....	I-14
“ Instruments.....	C-26		
“ Jacks.....	X- 8	<b>Z</b>	
Train Order Signals.....	P- 3	Zincs, Round Battery.....	J- 4
“ Spectacles.....	R-10	“ Crowfoot.....	J- 5
Trolley Wire Contactors.....	C-29		
Trucks, Freight House.....	X- 2		